

DAYORIS.COM

MIAMI

LOS ANGELES

Corporate / Showroom

Showroom

2114 SW 60th Terrace

11817 Major Street

Miramar, FL 33023

Culver City, CA 90230

(305) 572-0707

(213) 293-8820

info@dayoris.com

california@dayoris.com



Core Values

At DAYORIS, our vision guides us through everything we do.

We obsess about the outcome of our efforts, while striving to achieve above and beyond the expected.

Our goal is for clients to benefit from our dedicated work and craftsmanship, while offering them the opportunity for a rewarding experience throughout the design process.

Our corporate initiative is to continuously reinforce relationships with our employees, our vendors, and our clients, while operating with integrity and honesty, and striving to live and work successfully within our community.



Green Initiative

At DAYORIS, our green initiative is a logical evolution, focused on eliminating waste, creating efficiency, while continuously contributing towards environmental sustainability.

Our mission is to operate with minimal environmental impact by offering green and LEED certified products and services whenever available.

DAYORIS has established itself as a leader in environmentally friendly products, such as low-VOC (Volatile Organic Compound) and Formaldehyde - free products.



The People



When a company's employees are as important as the company itself, you have built an exceptional team.

DAYORIS employees are dedicated and passionate team players. They bring energy, ideas, and pride to their work, and it shows. Our people are selected for their enthusiasm, as well as their desire to work with clients in the creative process. Our employees come to us from a variety of professional backgrounds and experiences, each with a unique skillset and area of expertise.

Together, they create a team greater than the sum of its parts.

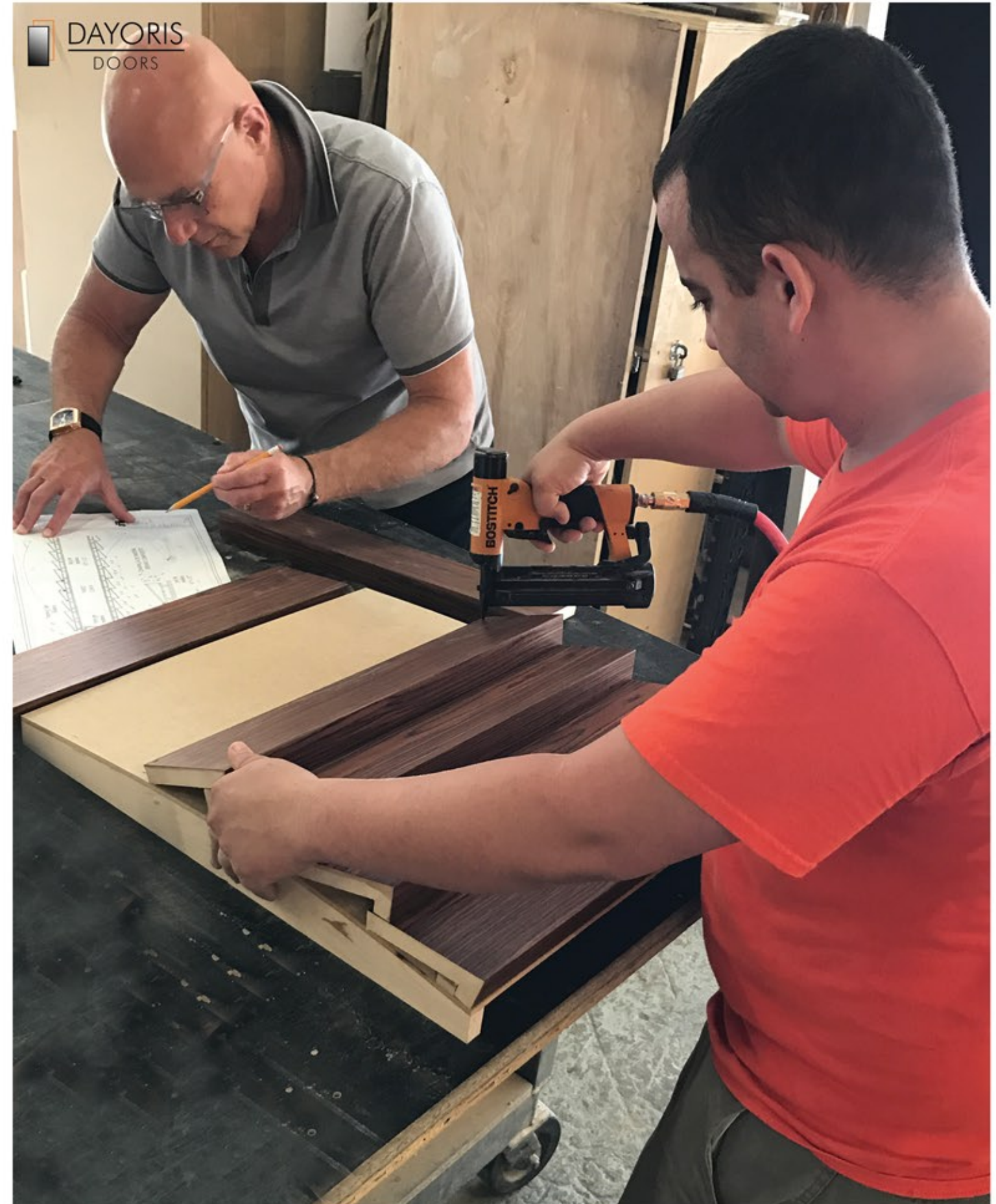
Manufacturing and Development

At DAYORIS, we pride ourselves with being on the forefront of modern door and cabinetry design. Our staff is constantly involved in the performance of relevant, influential and visionary research geared towards the manufacturing and development of innovative door and furniture designs.

The trend today is smooth clean lines with minimal visual detail. DAYORIS has developed systems to manufacture and install oversized doors that operate with the ease of a standard sized door, while still concealing the necessary structural elements needed for the safe and smooth operation of a door this size.

When architects approach us with new and challenging ideas, DAYORIS embraces them and engineers the design. We manipulate the concept using state of the art drafting software, we then manufacture, and finally, it goes into the field for installation.

It is a well refined process.



Doors

Filo muro/

frameless, flush with the wall

Telaio/

with raised casing

Filo/

flush with casing

Ombra/

floating jamb with shadow reveal

Panel/

paneling and door application

DOOR SLAB SIZE : up to 6' x 12' (custom systems available for wider applications)

FRAMES : Frameless profile, Wood frame, Aluminum frame

FINISH : Primed, Laminated, Lacquer, Wood veneer

APPLICATIONS : Swing, Pocket, Sliding, Bypass, Bi-fold, Ghost, Barn

Pivot, Synchronized, Telescopic, Tri-fold



Filo muro/

frameless, flush with the wall

Available as:

Swing/
Pocket/
Bypass/
Pivot/
Euro system 1" doors/
Euro bifold 1" doors/
Ghost/
Barn/

Venturing beyond the limits of imagination, capable of surprising us once again, DAYORIS presents the Filo Muro/ collection. These doors lie flush with adjacent walls, while still opening into or out of the room. Both the flush In-Swing and the Flush Out-Swing models in the collection are manufactured with the slimmest Aluminum profile available on the market today. The doors are fitted with a CEAM Italia 3D adjustable concealed hinge system and European magnetic mortise.

The DAYORIS Filo Muro/ door profile represents Flush IN-Swing and Flush OUT-Swing technology and design at their finest.

Technical Specifications:
Solid Core Door Slab
Thickness from 1" to 1 3/4"
Finish – Designer's choice
Hinges – CEAM Italia 3D adjustable
Frame – Concealed aluminum
Handset – DAYORIS Italia
Mortise – Bonaiti Magnetic



Filo Muro/ Laminated or wood veneer finish



Filo Muro/ lacquer finish, pivot system

"I have always appreciated those who dare to experiment
with materials and proportions"
Zaha Hadid



Filo Muro/ primed finish, to match the wall

Reach new heights with DAYORIS frameless floor to ceiling doors.
The ultimate in minimalist design, these doors are installed without the traditional "header"
and maximize the opening to achieve the greatest open space possible.



Filo Muro/ lacquer finish, invisible hinge system



Filo Muro/ simple painted finish

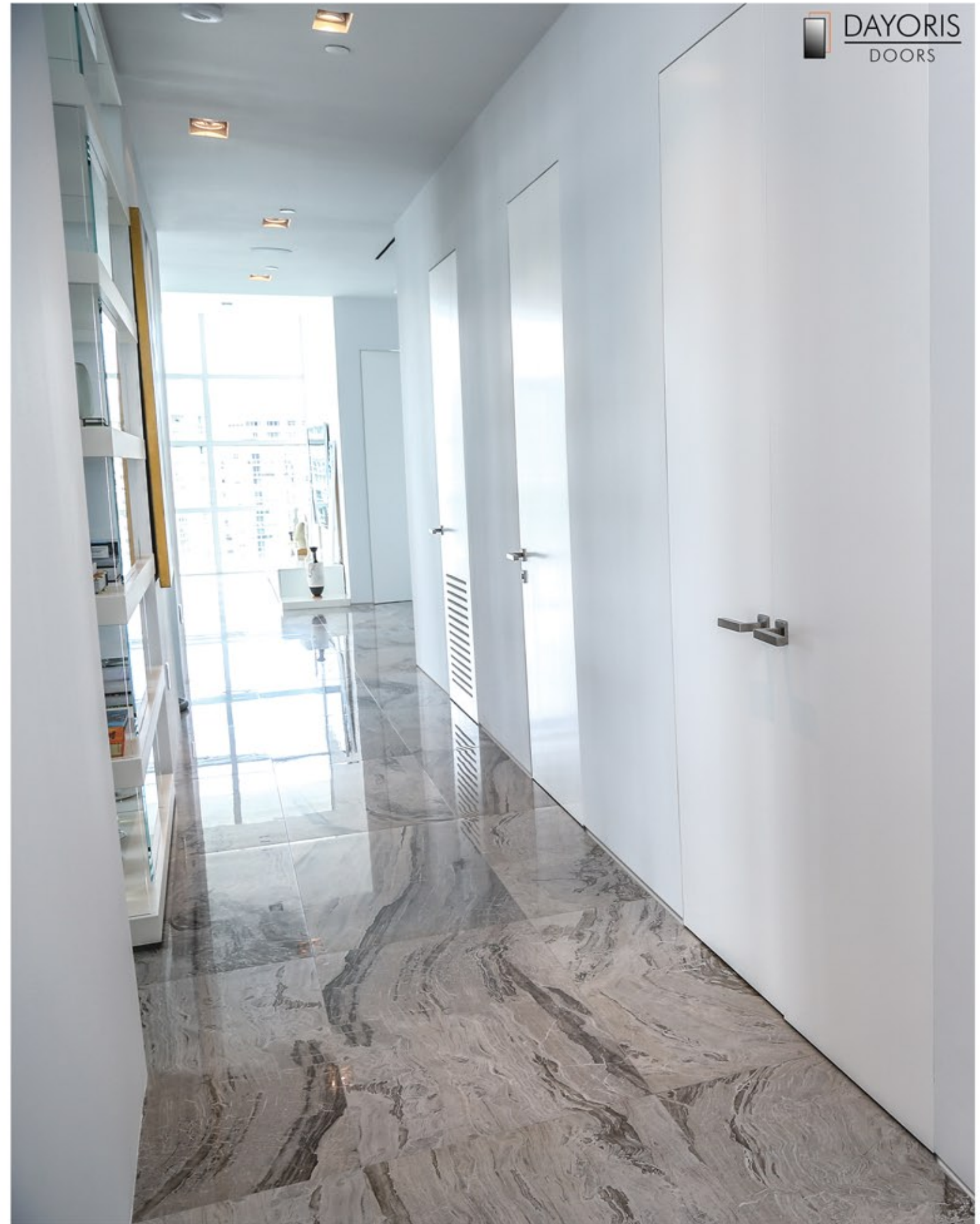
An invisible, frameless door facilitates a continuous, uninterrupted, linear plane in the living space. This provides for the perfect canvas for fine art, custom wall treatments, and designer home décor.



Filo Muro/ Bi-fold system Lacquer finish

"To create something exceptional,
your mindset must be relentlessly focused
on the smallest detail"

Giorgio Armani



Filo Muro/ Lacquer finish

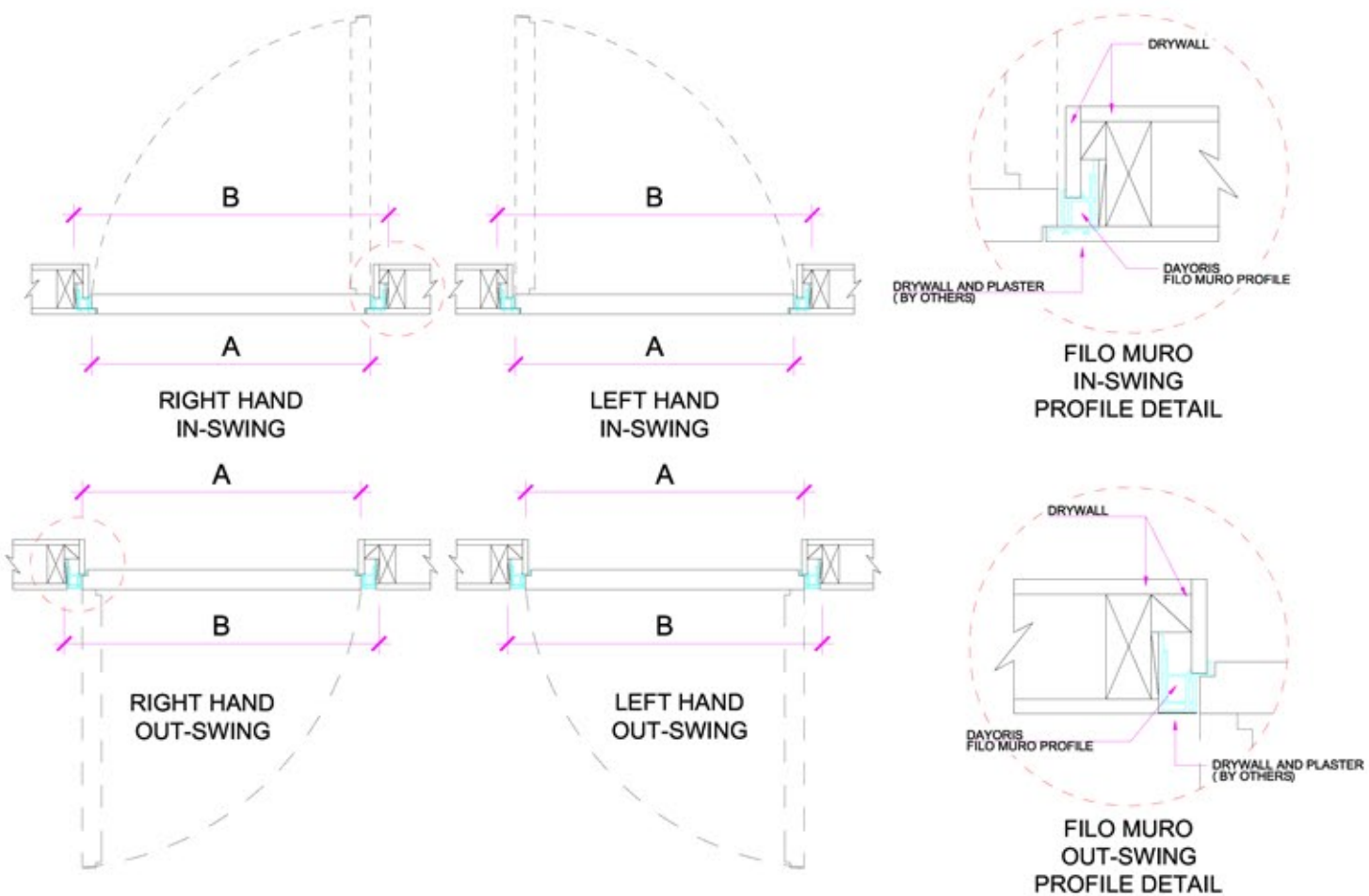


Ghost/ Walnut finish

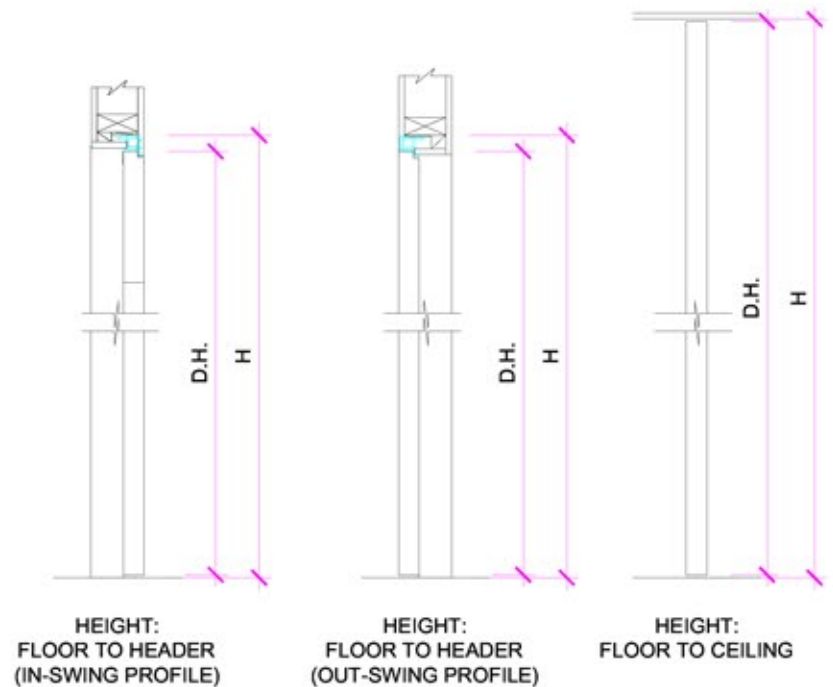
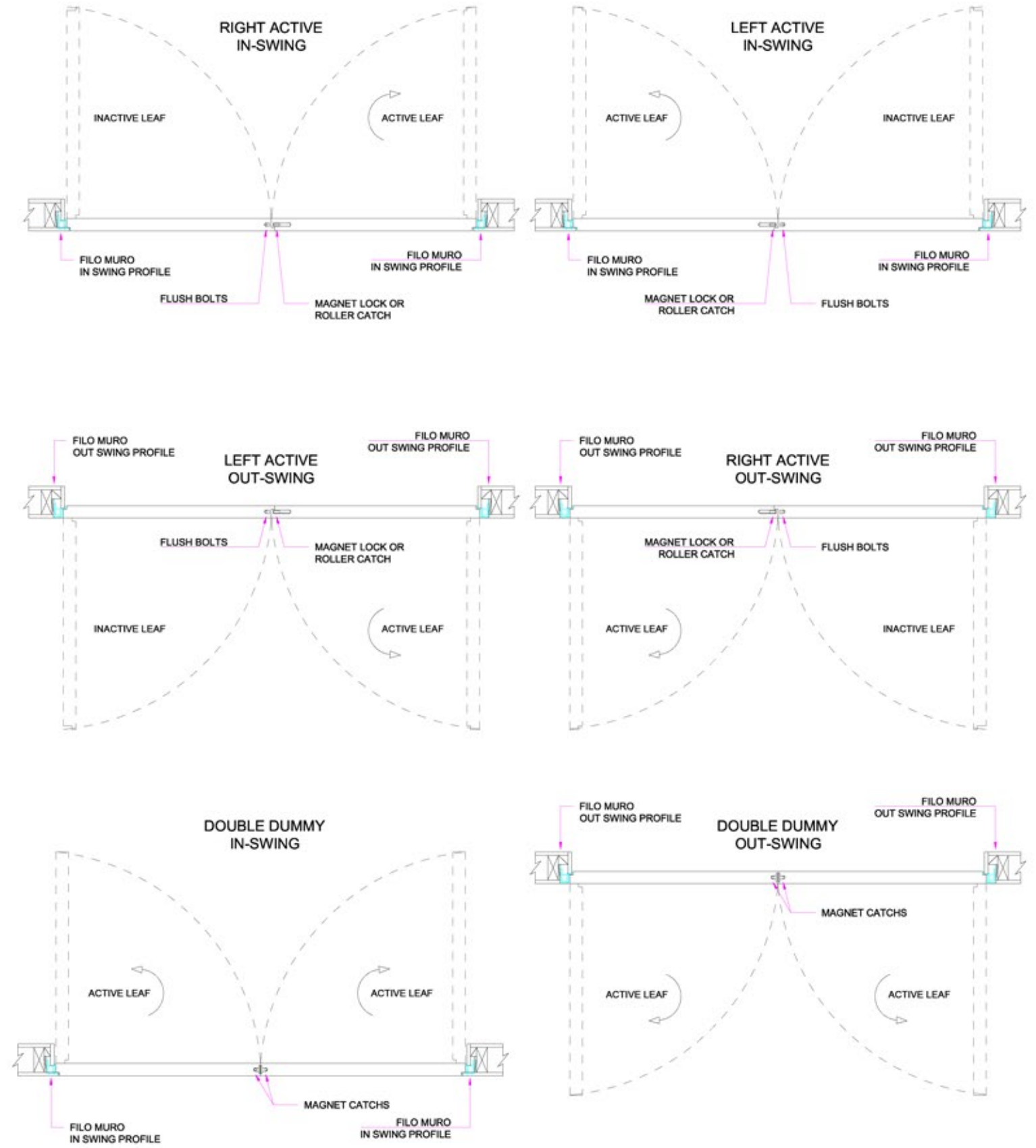


Barn/ Walnut finish

Filo muro/ swing door detail



Filo muro/ swing door detail

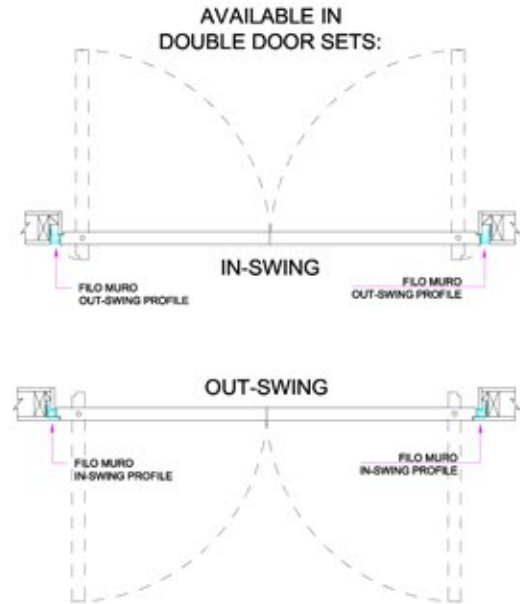
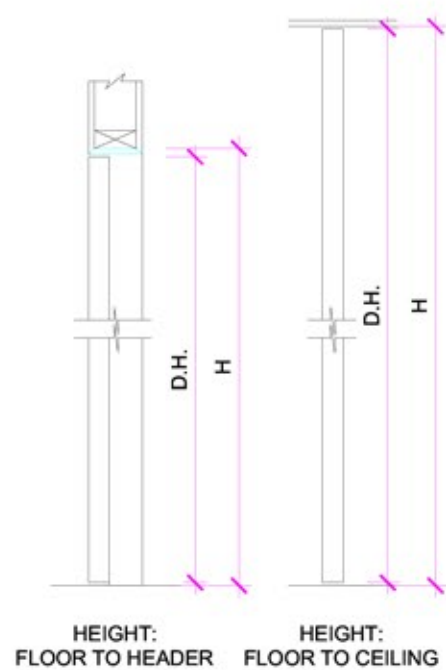
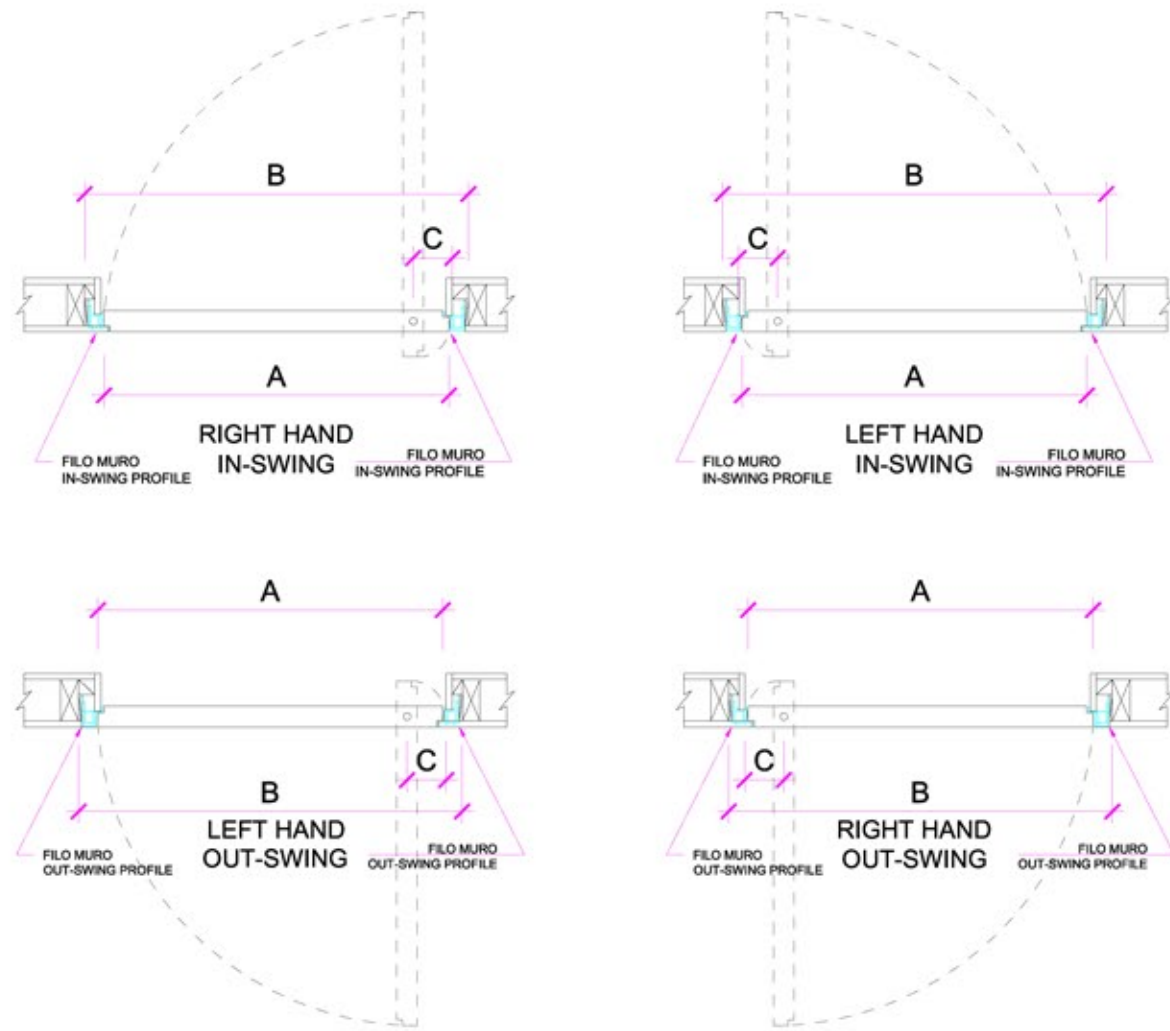


WIDTH FORMULA:
 $A = B - 3 \frac{1}{2}''$

HEIGHT FORMULAS:
 FLOOR TO HEADER: $D.H. = H - 2''$
 FLOOR TO CEILING: $D.H. = H - \frac{3}{8}''$

LEGEND:
 A = DOOR SIZE
 B = ROUGH OPENING WIDTH
 D.H. = DOOR HEIGHT
 H = ROUGH OPENING / FINISHED HEIGHT

Filo muro/ pivot door detail

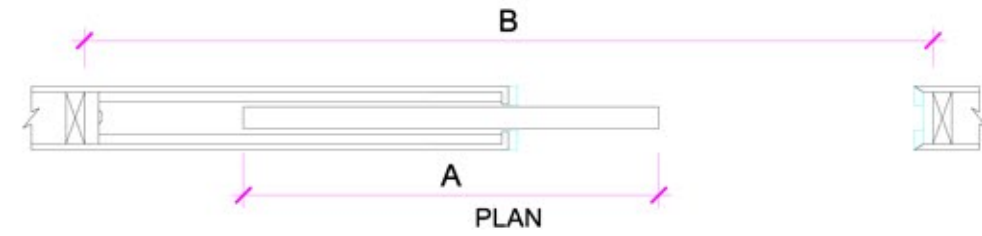


WIDTH FORMULA:
 $A = B - 3 \frac{1}{2}''$

HEIGHT FORMULAS:
FLOOR TO HEADER: $D.H. = H - 2''$
FLOOR TO CEILING: $D.H. = H - 1 \frac{1}{2}''$

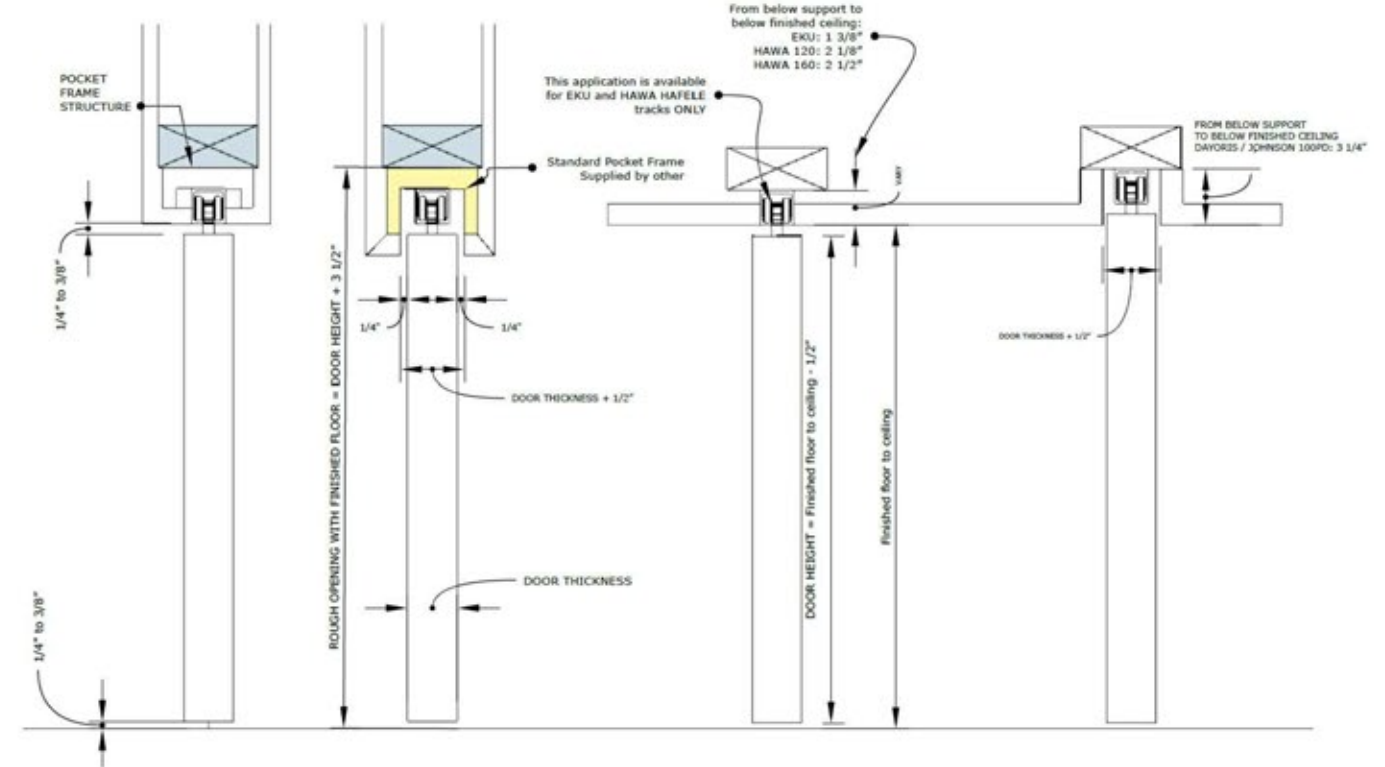
LEGEND:
A = DOOR SIZE
B = ROUGH OPENING WIDTH
D.H. = DOOR HEIGHT
H = ROUGH OPENING / FINISHED HEIGHT
C = PIVOT OFFSET (3" MIN.)

Filo muro/ pocket door detail

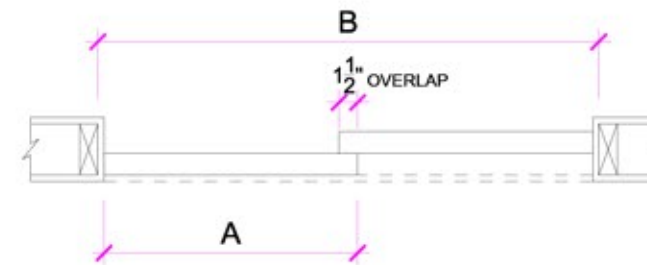


WIDTH FORMULAS:
 $B = (A \times 2) + 2''$
 $A = (B - 2'') / 2$

HEIGHT CONFIGURATIONS:



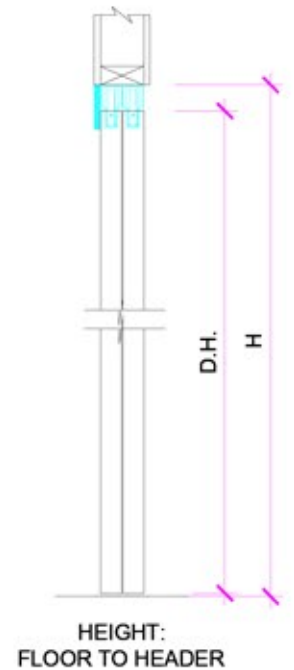
Filo muro/ bypass door detail



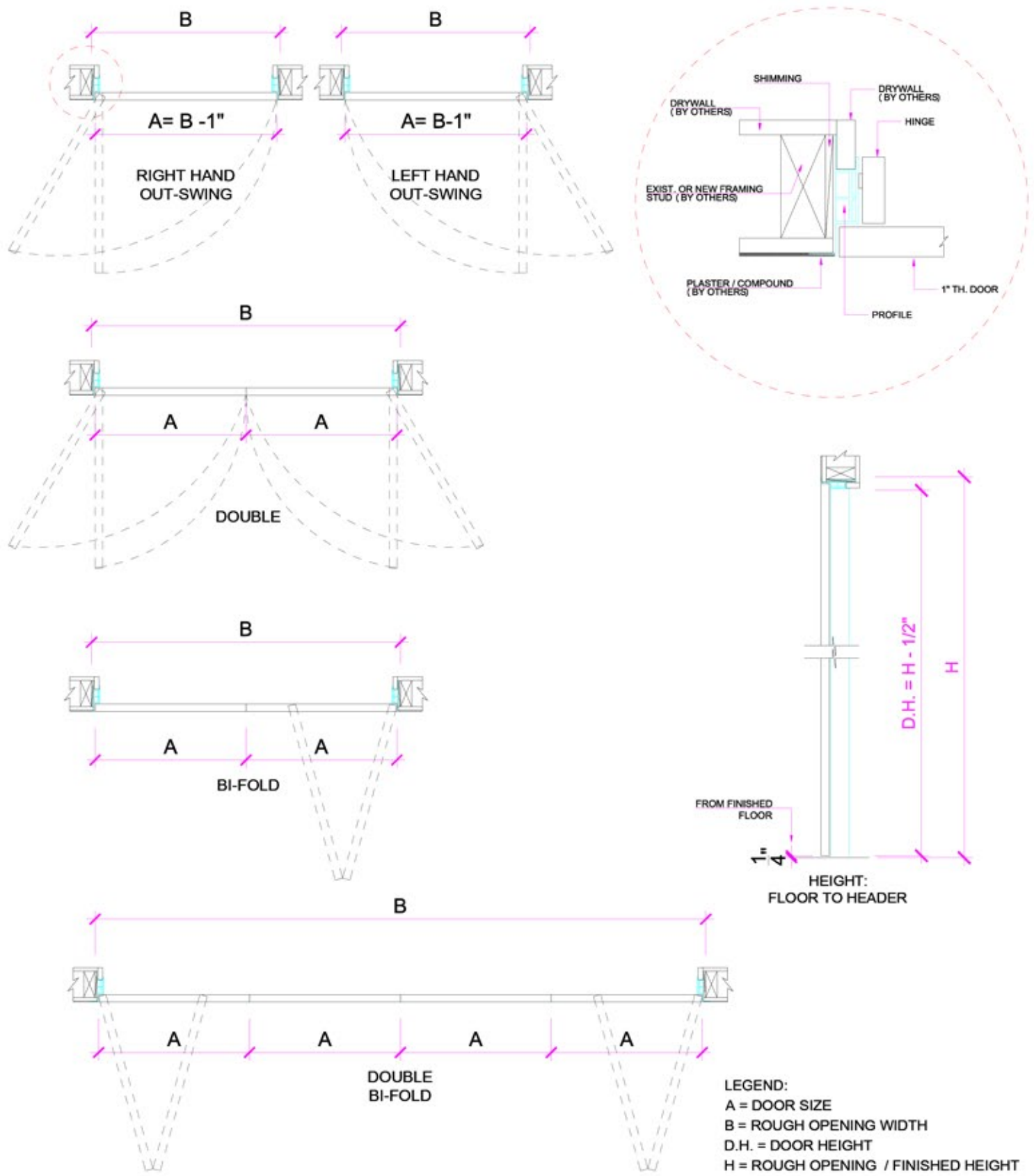
LEGEND:
A = DOOR SIZE
B = ROUGH OPENING WIDTH
D.H. = DOOR HEIGHT
H = ROUGH OPENING / FINISHED HEIGHT

WIDTH FORMULA:
 $A = B / 2 + 3/4''$

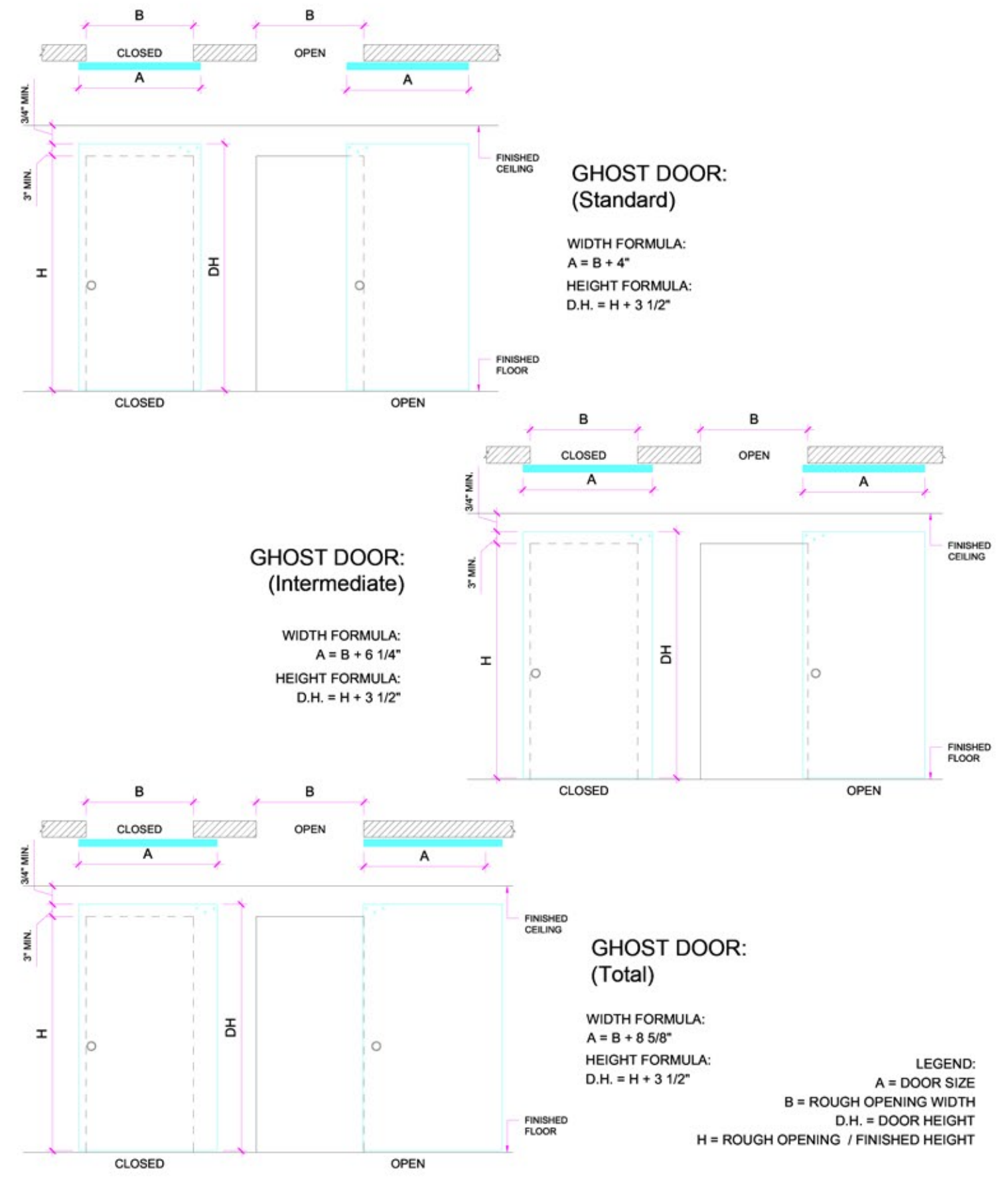
HEIGHT FORMULA:
D.H. = $H - 2 \frac{1}{4}''$



Filo muro/ euro and euro bi-fold door detail



Filo muro/ barn /ghost / sliding door detail



Telaio/ with raised casing

Available as:

Swing/
Pocket/
Bypass/
Pivot/
Euro system 1" doors/
Euro bifold 1" doors/

Traditional styling with a Contemporary profile, the DAYORIS Telaio/ provides contrast, emphasizing the shadow effect of a multi plane profile between casing and door. The clear and essential differentiating lines lend themselves towards the furnishing of most transitional environments.

Telaio is the evolution of an historical door profile that has evolved to include square, flat casings.

Adaptable to any wall thickness, the Telaio/ presents itself with completely finished wood casings and jamb.

This door profile is equipped with the CEAM Italia 3D adjustable hinge system and European magnetic mortise.

Technical Specifications:

Solid Core Door Slab

Thickness range – 1" to 1-3/4"

Finish – Designer's choice

Hinges – CEAM Italia 3D adjustable

Frame – Wood finished

Handset – DAYORIS Italia

Mortise – Bonaiti Magnetic



Telaio/ walnut finish

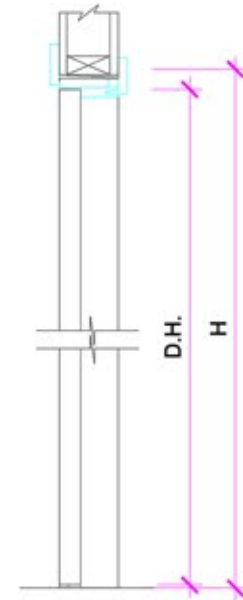
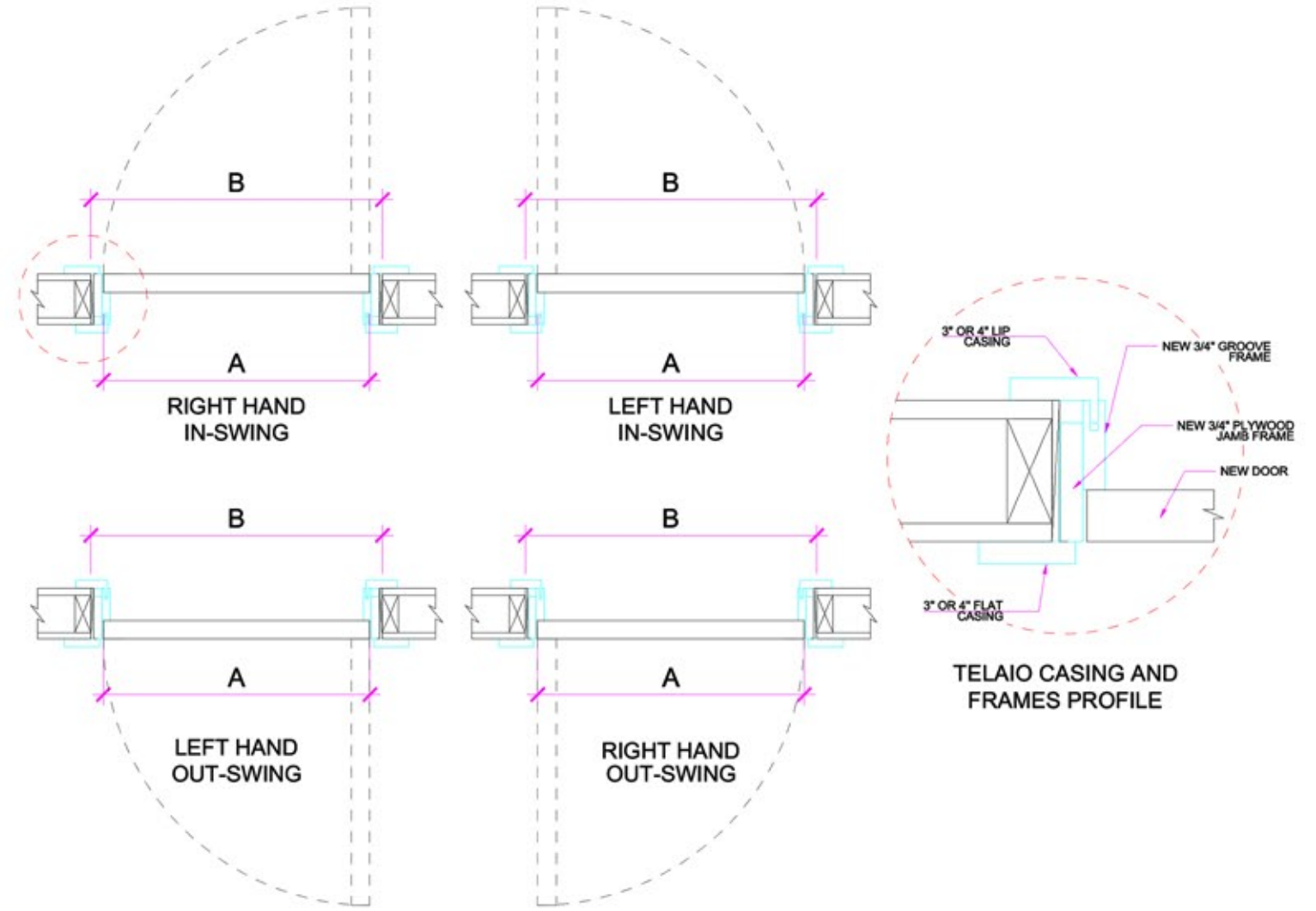




Telaio/ white gloss finish



Telaio/ swing door detail

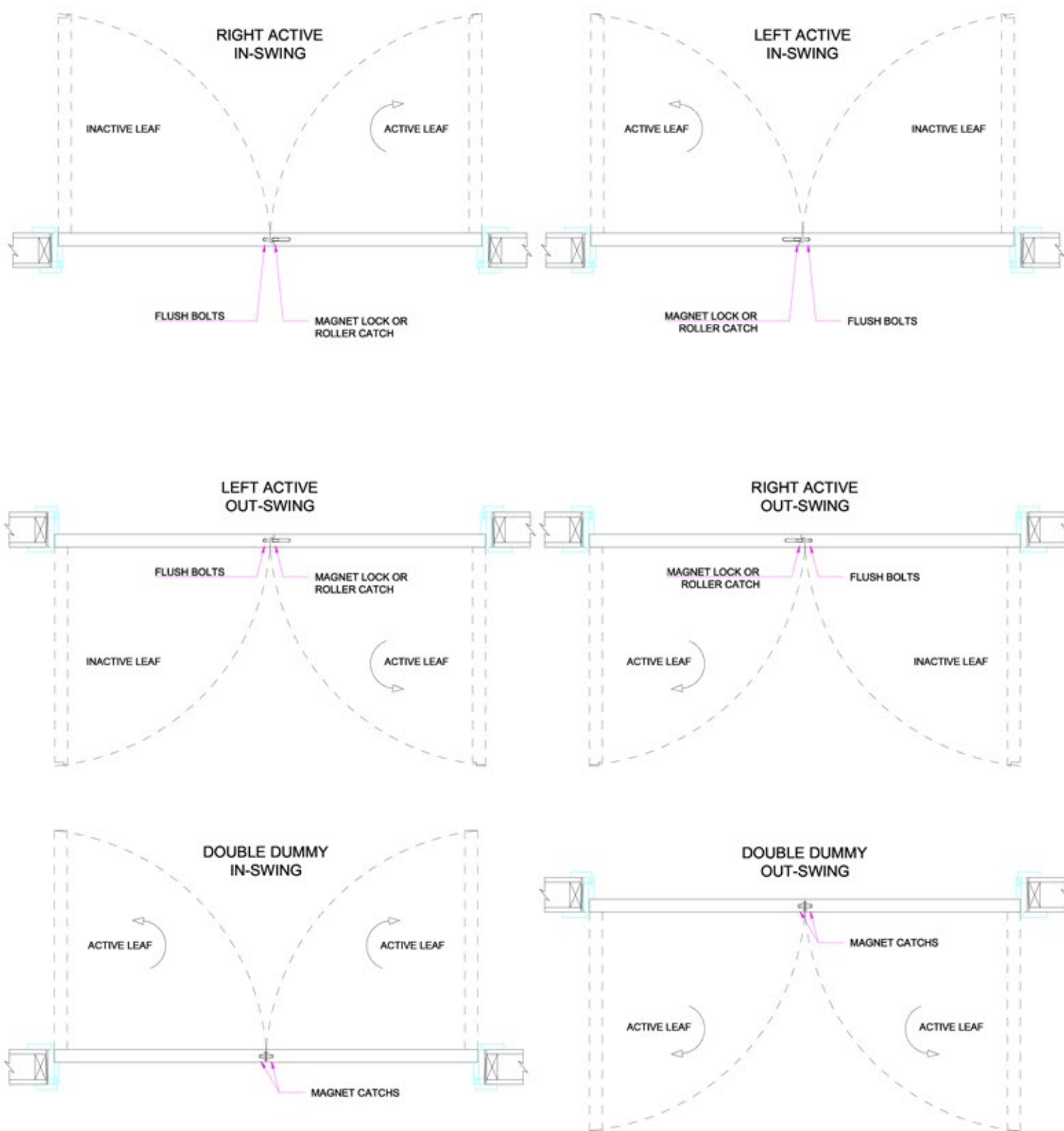


HEIGHT:
FLOOR TO HEADER

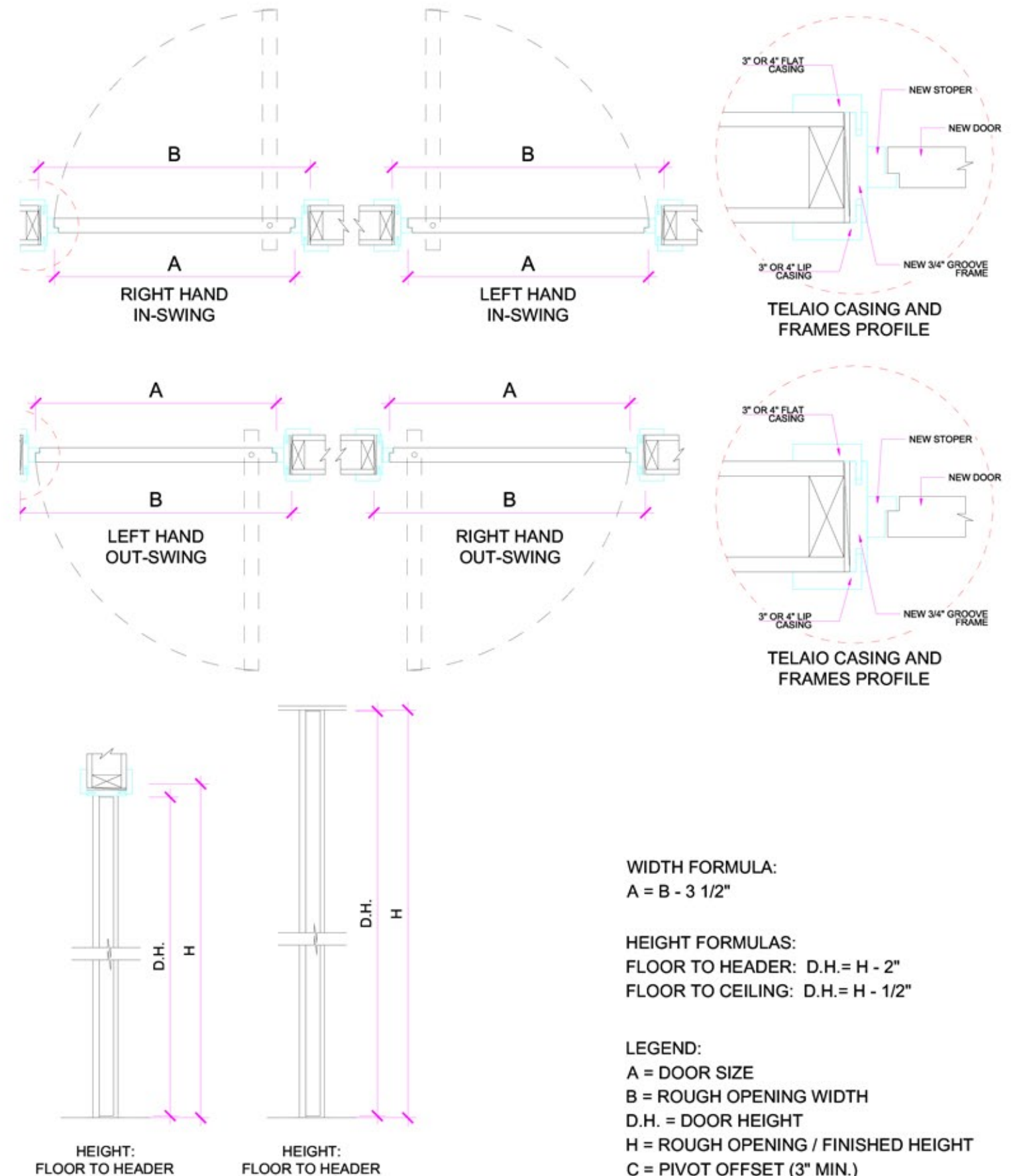
LEGEND:
 A = DOOR SIZE
 B = ROUGH OPENING WIDTH
 D.H. = DOOR HEIGHT
 H = ROUGH OPENING / FINISHED HEIGHT

WIDTH FORMULA:
 $A = B - 2"$
 HEIGHT FORMULAS:
 FLOOR TO HEADER: $D.H. = H - 2"$

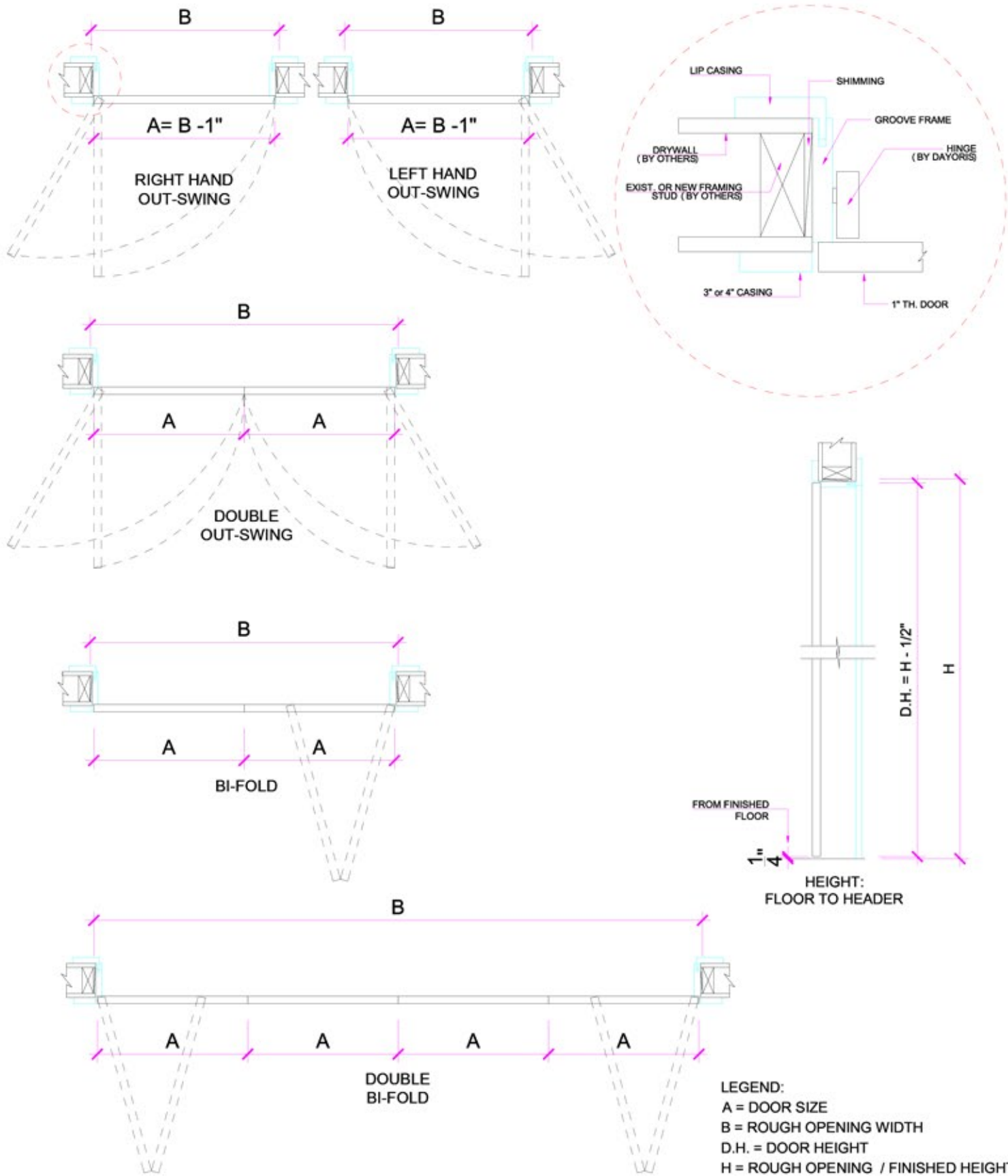
Telaio/ swing door detail



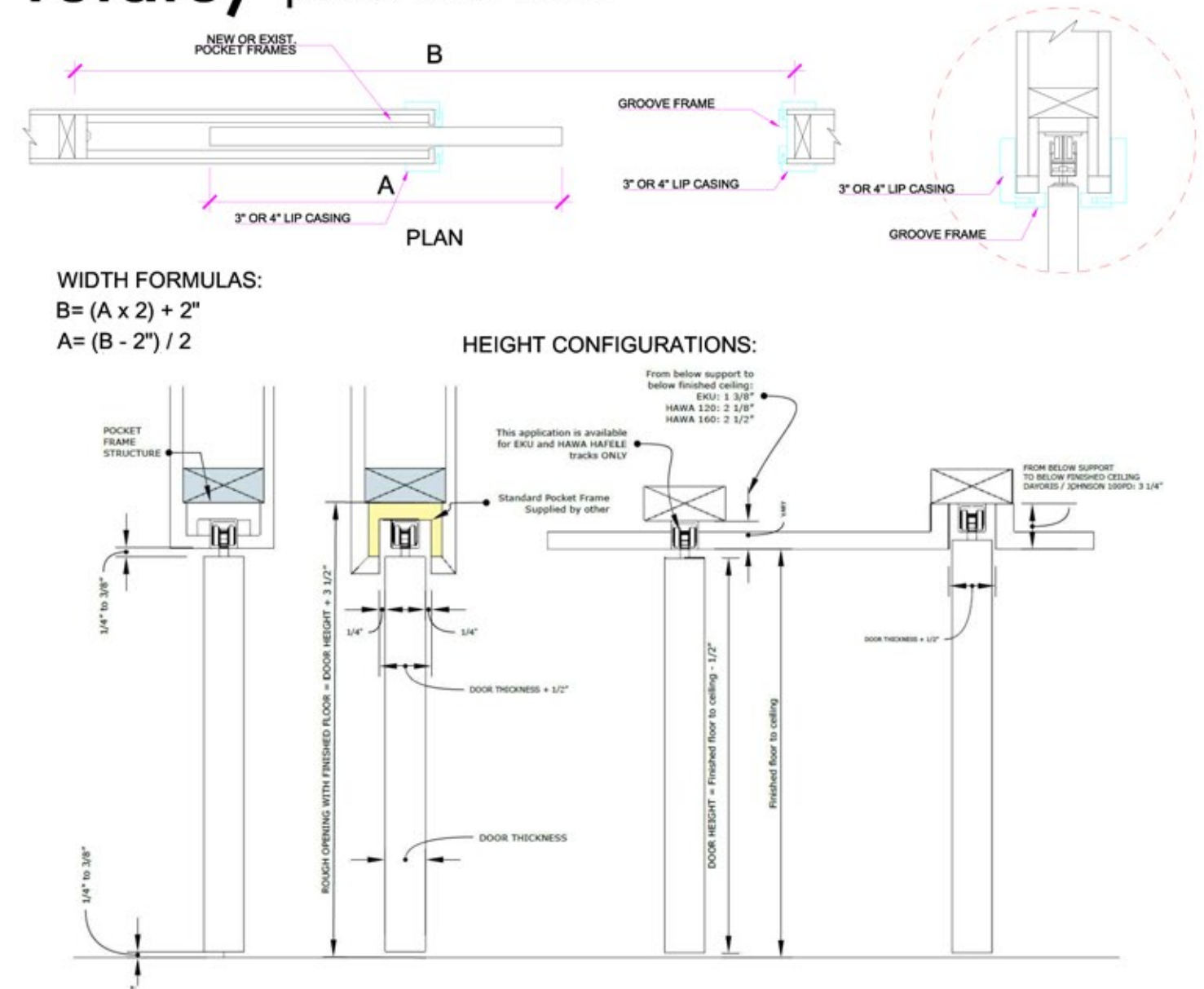
Telaio/ pivot door detail



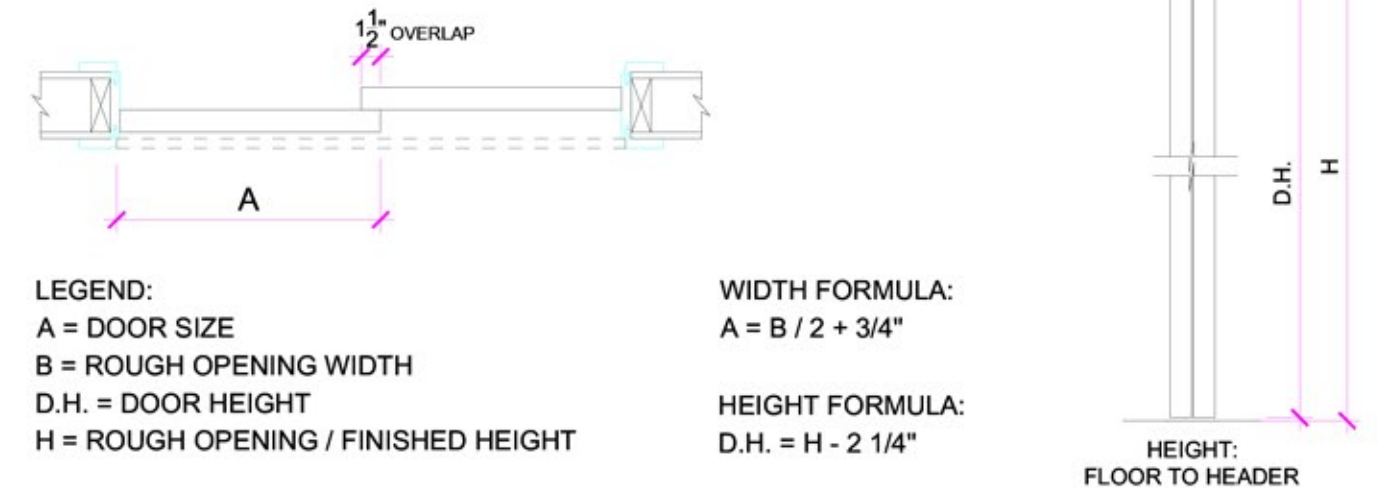
Telaio/ euro and euro bi-fold door detail



Telaio/ pocket door detail



Telaio/ bypass door detail



Filo/ flush with casing

Available as:

Swing/
Pocket/
Bypass/
Pivot/
Euro system 1" doors/
Euro bifold 1" doors/

Old habits are hard to break. With the elegance of a coplanar design, door and casing, the DAYORIS Filo/ presents itself with the simplicity of a single flat plane that sits proud of the wall.

An alternative installation method for the Filo/ door is to install the door flush with the adjacent wall and have a reglet profile installed against the casing creating a shadow effect surrounding the door.

The Filo/ model comes with an adjustable wood jamb system that will accommodate any wall thickness.

The casing wraps the wall completely from the flush door side through the interior structural jamb, terminating with the casing on the inset side of the door. This door profile is equipped with the CEAM Italia 3D adjustable hinge system and Bonaiti Italian magnetic mortise

Technical Specifications:

Solid Core Door Slab
Thickness range – 1" to 1-3/4"
Finish – Designer's choice
Hinges – CEAM Italia 3D adjustable
Frame – Wood finished
Handset – DAYORIS Italia
Mortise – Bonaiti Magnetic



Filo/ white finish





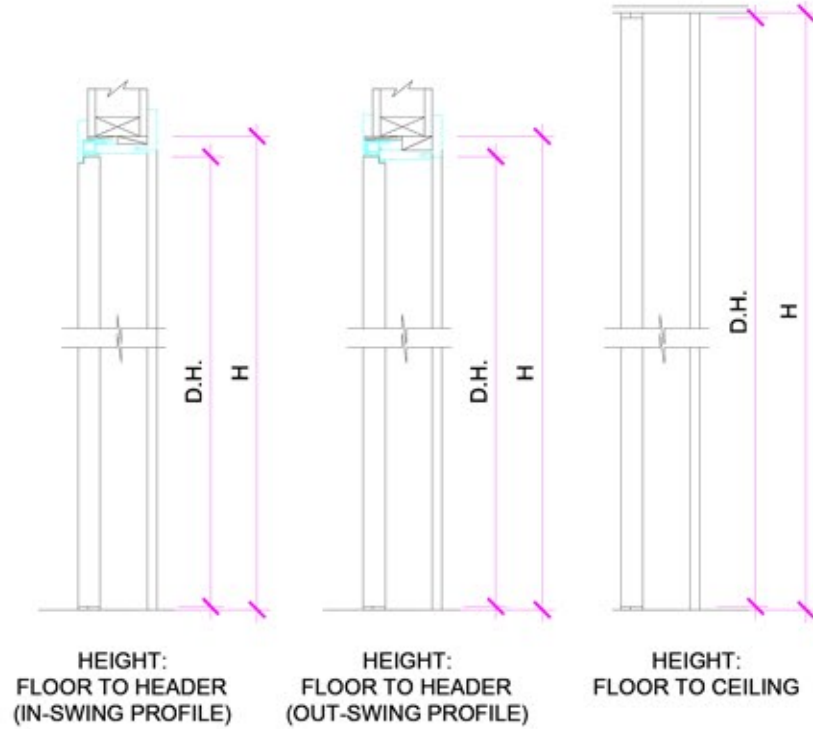
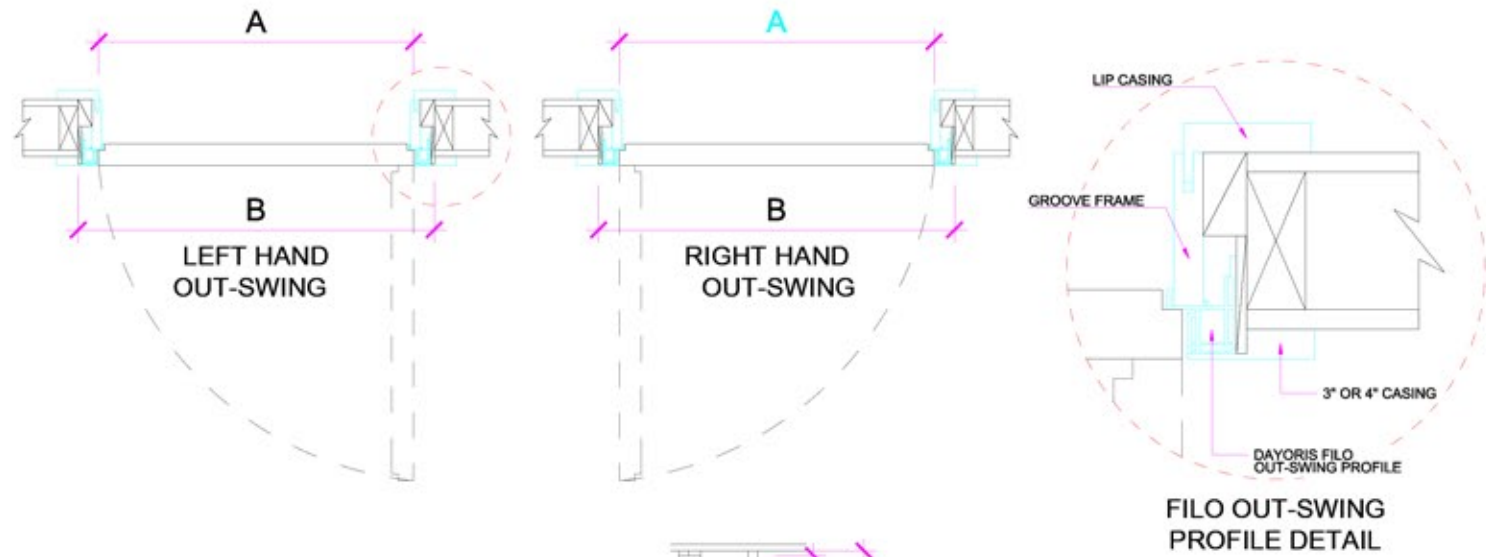
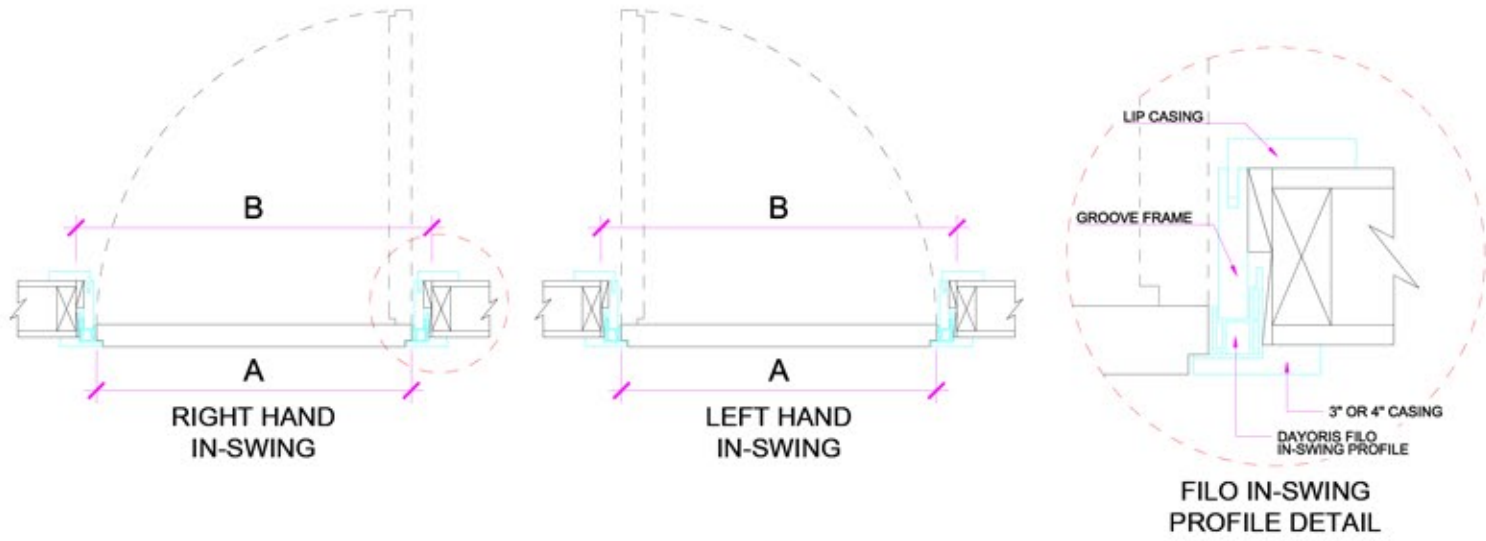
Filo/ 2 tone Wenge



Filo/ white matte lacquer

“Simplicity is the ultimate form of sophistication.”
Leonardo da Vinci

Filo/ swing door detail

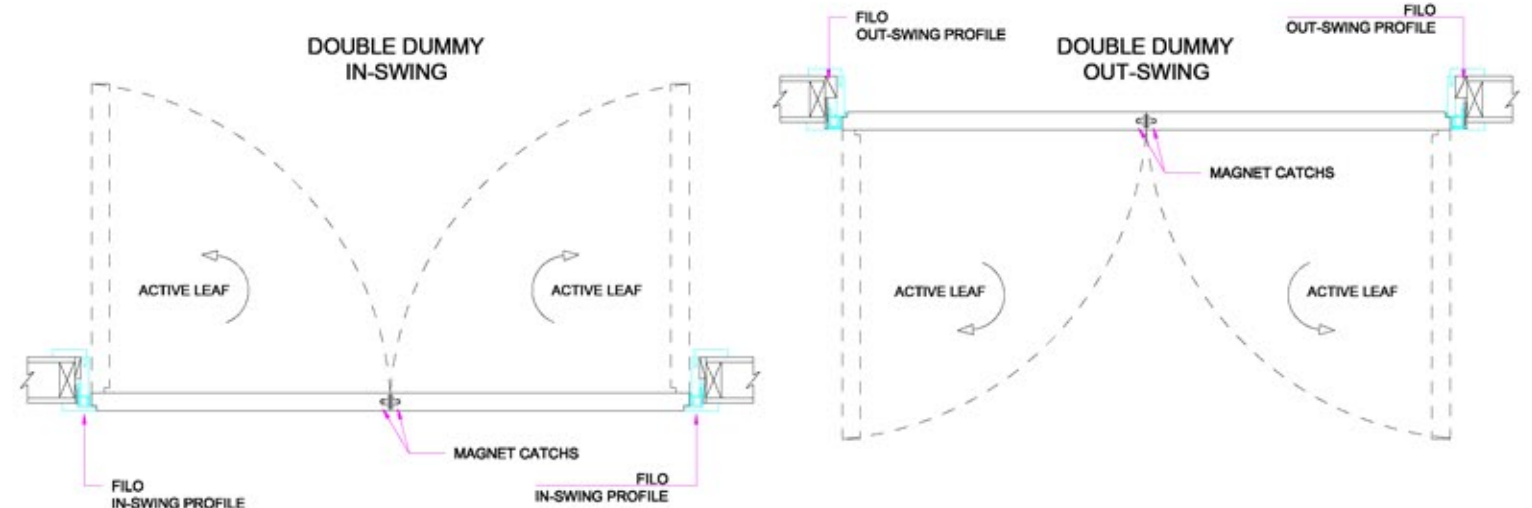
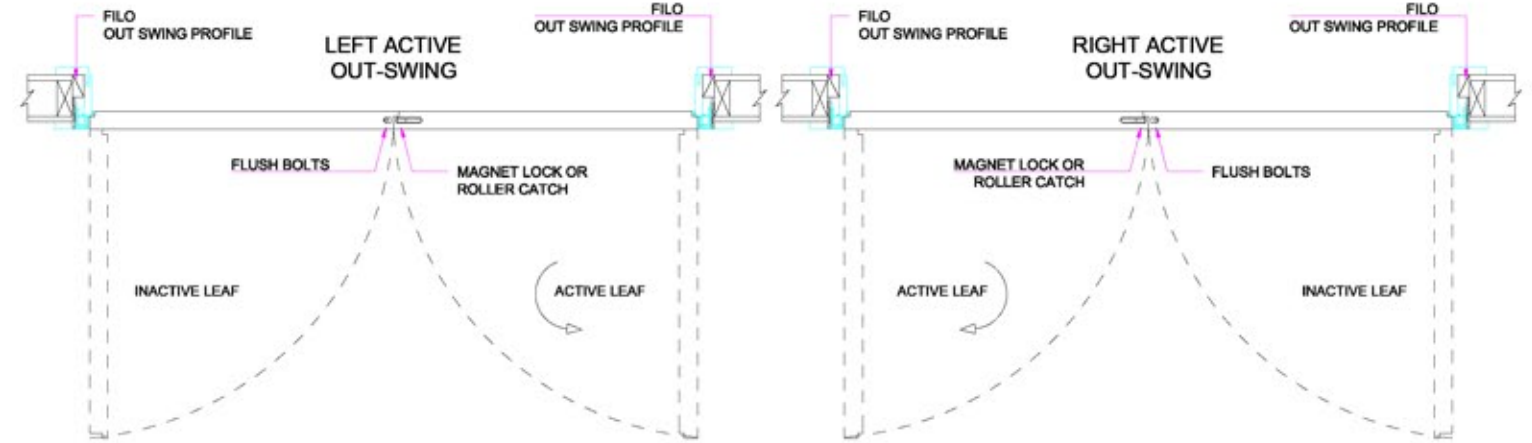
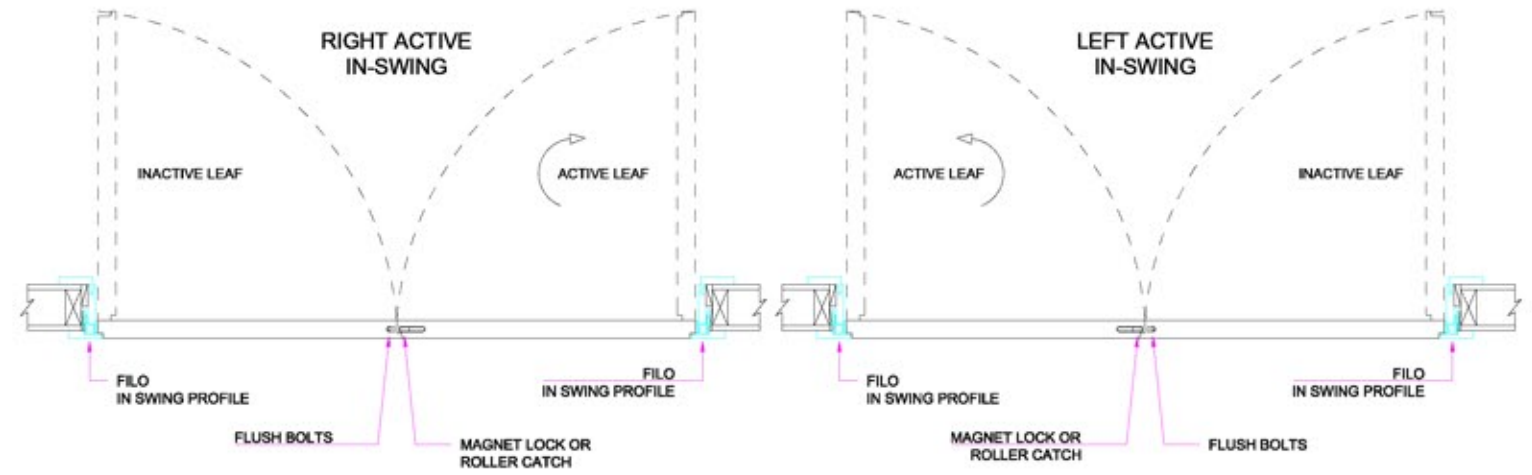


WIDTH FORMULA:
 $A = B - 3 \frac{1}{2}"$

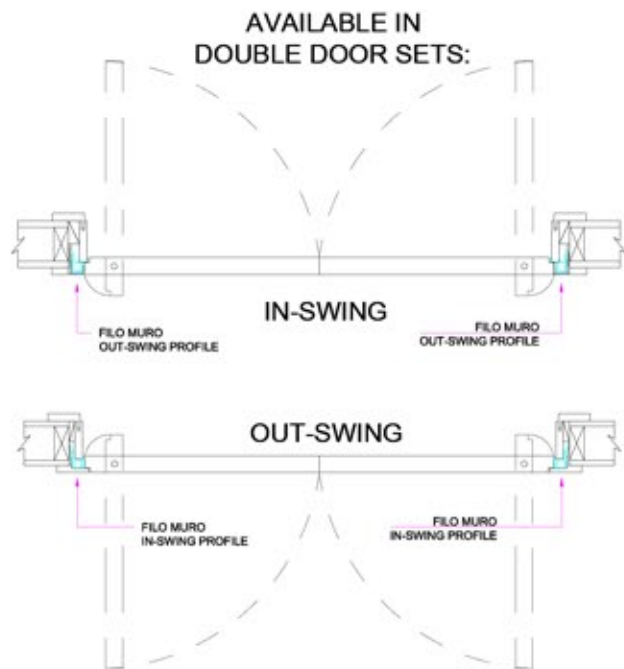
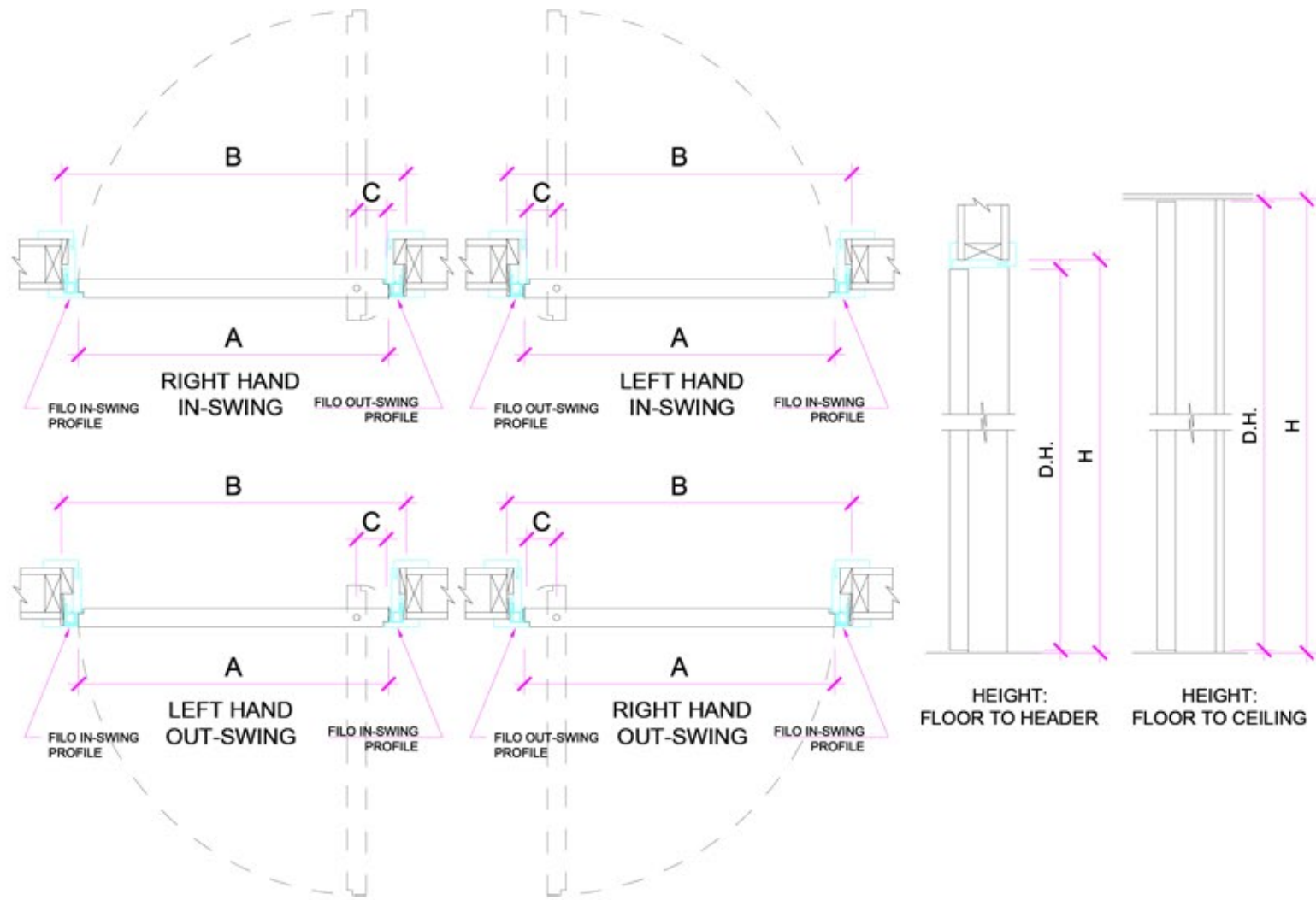
HEIGHT FORMULAS:
 FLOOR TO HEADER: $D.H. = H - 2"$
 FLOOR TO CEILING: $D.H. = H - \frac{3}{8}"$

LEGEND:
 A = DOOR SIZE
 B = ROUGH OPENING WIDTH
 D.H. = DOOR HEIGHT
 H = ROUGH OPENING / FINISHED HEIGHT

Filo/ swing door detail



Filo/ pivot door detail

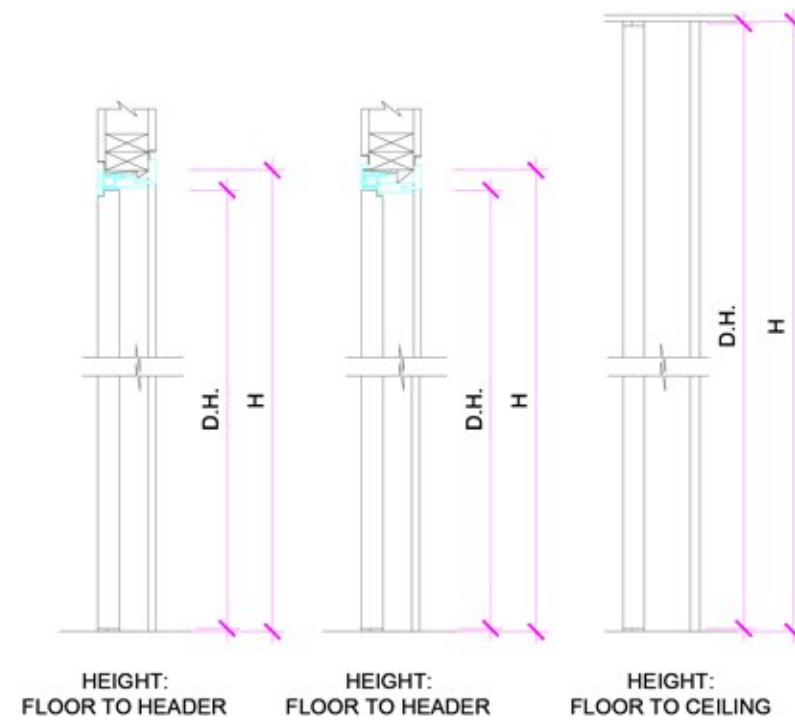
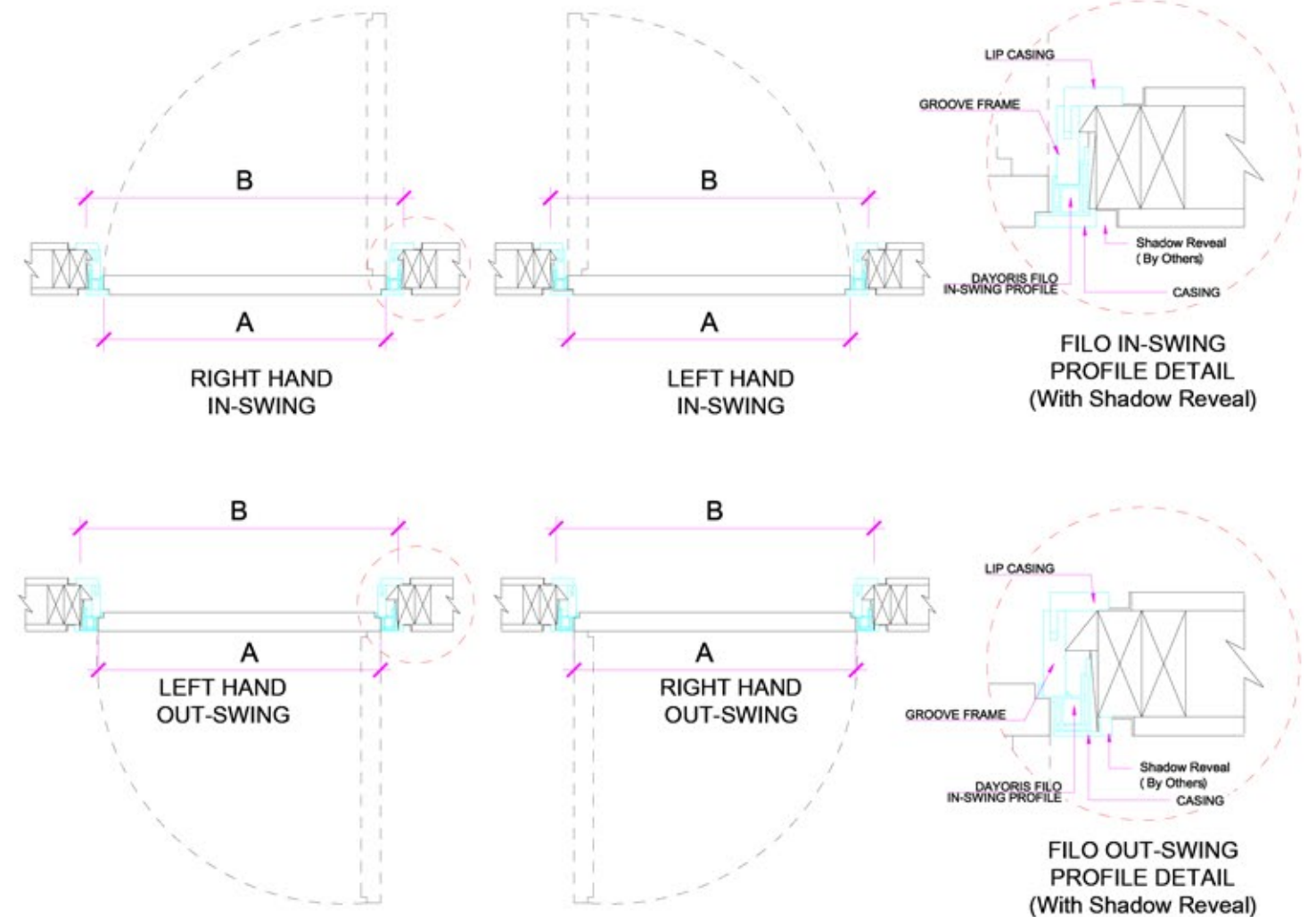


WIDTH FORMULA:
 $A = B - 3 \frac{1}{2}''$

HEIGHT FORMULAS:
 FLOOR TO HEADER: $D.H. = H - 2''$
 FLOOR TO CEILING: $D.H. = H - \frac{1}{2}''$

LEGEND:
 A = DOOR SIZE
 B = ROUGH OPENING WIDTH
 D.H. = DOOR HEIGHT
 H = ROUGH OPENING / FINISHED HEIGHT
 C = PIVOT OFFSET (3" MIN.)

Filo/ swing door detail with floating reveal (by other)

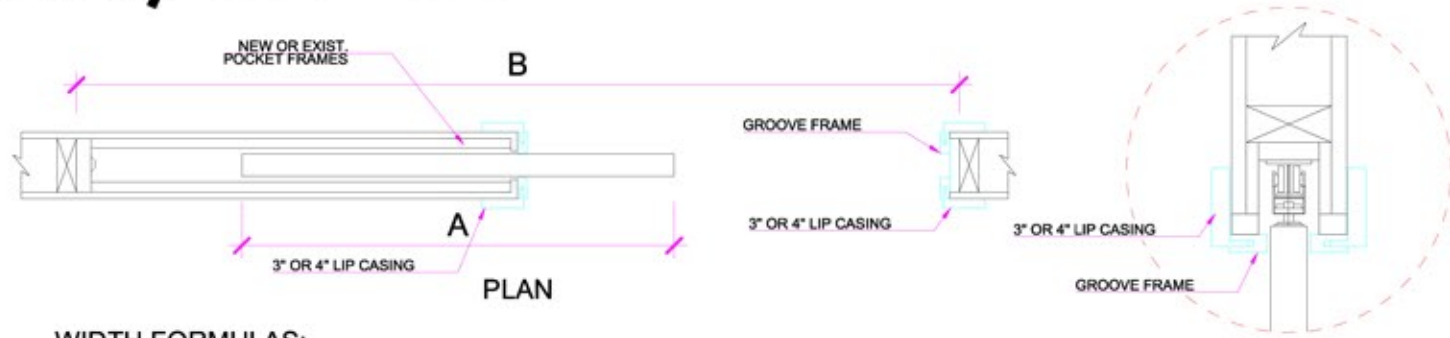


WIDTH FORMULA:
 $A = B - 3 \frac{1}{2}''$

HEIGHT FORMULAS:
 FLOOR TO HEADER: $D.H. = H - 2''$
 FLOOR TO CEILING: $D.H. = H - \frac{3}{8}''$

LEGEND:
 A = DOOR SIZE
 B = ROUGH OPENING WIDTH
 D.H. = DOOR HEIGHT
 H = ROUGH OPENING / FINISHED HEIGHT

Filo/ pocket door detail

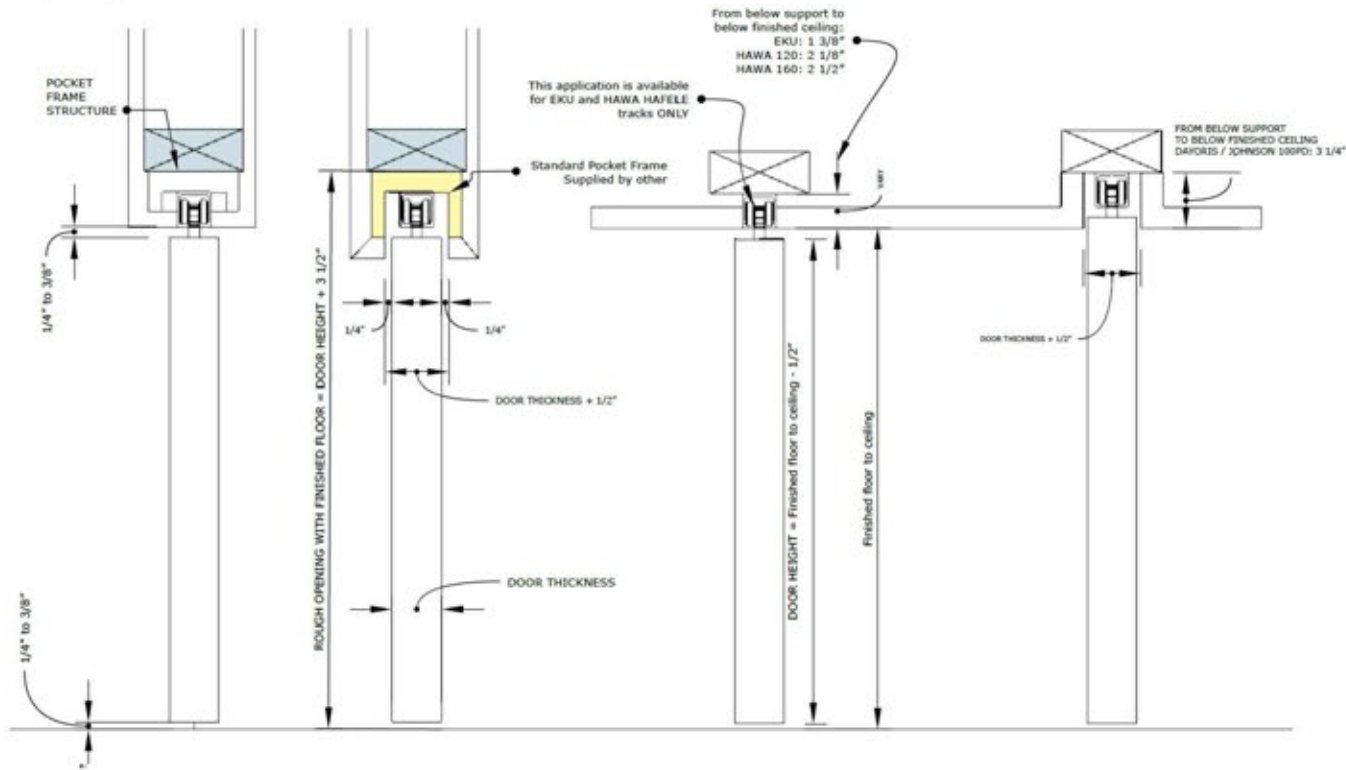


WIDTH FORMULAS:

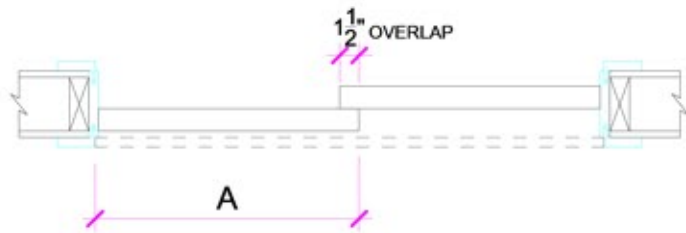
$$B = (A \times 2) + 2"$$

$$A = (B - 2") / 2$$

HEIGHT CONFIGURATIONS:



Filo/ bypass door detail



LEGEND:

A = DOOR SIZE

B = ROUGH OPENING WIDTH

D.H. = DOOR HEIGHT

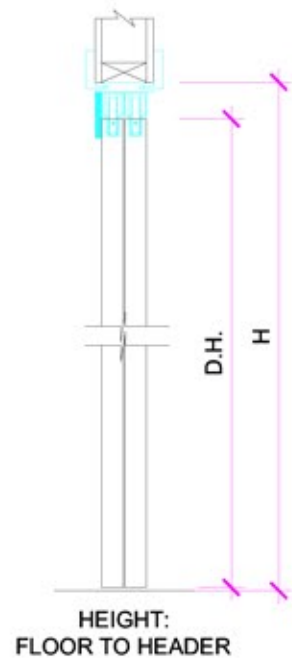
H = ROUGH OPENING / FINISHED HEIGHT

WIDTH FORMULA:

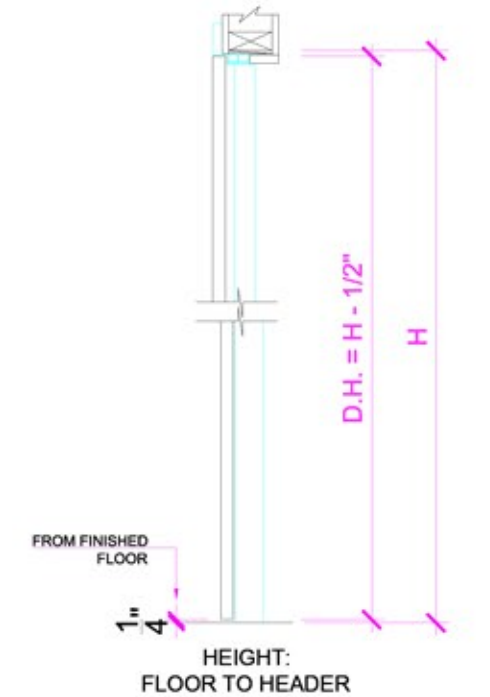
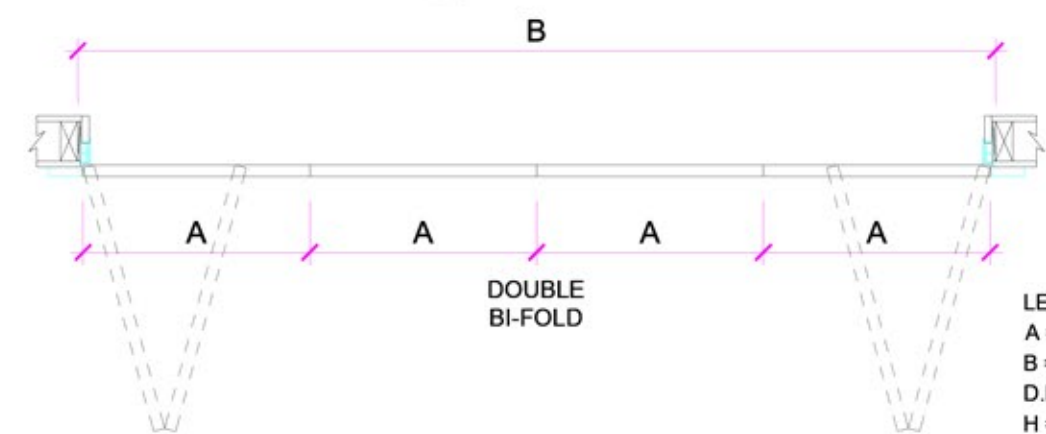
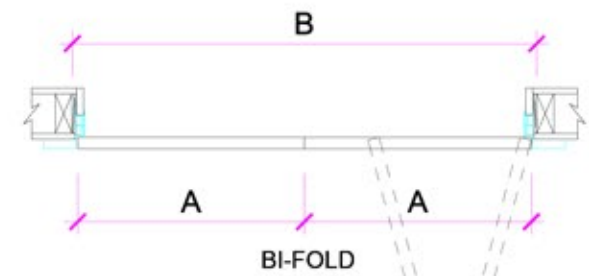
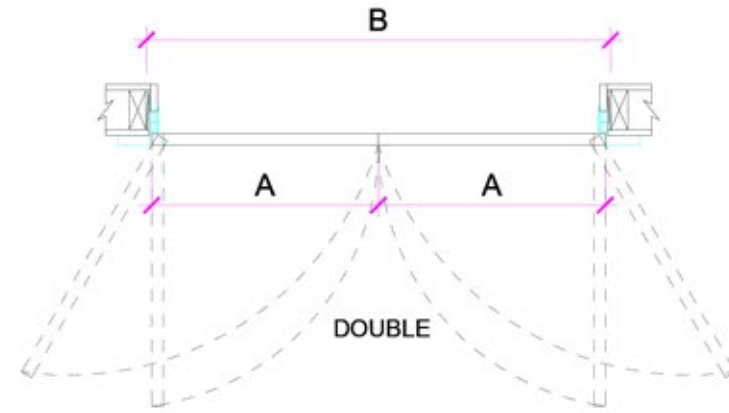
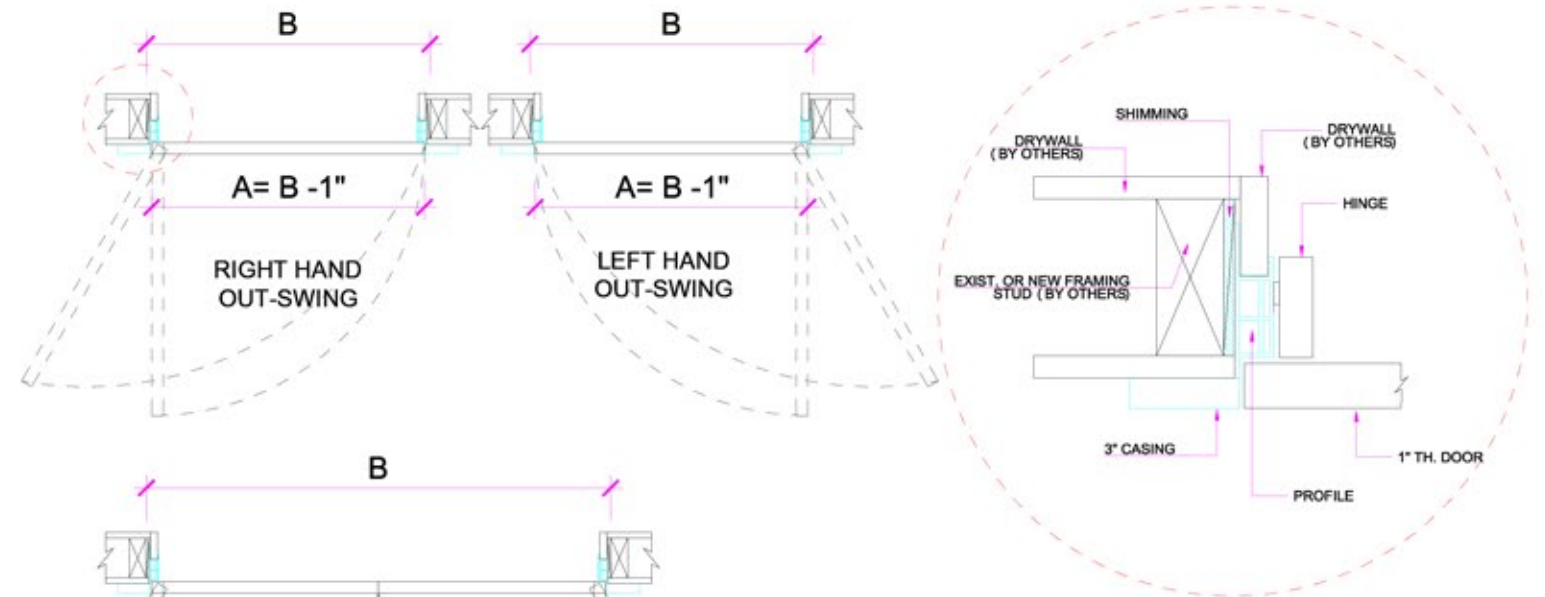
$$A = B / 2 + 3/4"$$

HEIGHT FORMULA:

$$D.H. = H - 2 1/4"$$



Filo/ euro and euro bi-fold door detail



LEGEND:

A = DOOR SIZE

B = ROUGH OPENING WIDTH

D.H. = DOOR HEIGHT

H = ROUGH OPENING / FINISHED HEIGHT

Ombra/

floating jamb with shadow reveal

Available as:

Swing/
Pocket/
Bypass/
Pivot/
Euro system 1" doors/
Euro bifold 1" doors/

The newest profile added to the DAYORIS line of custom doors, Ombra/ proudly displays an open jamb design incorporated in a multiplane door.

With the warmth of a wood jamb creating a shadow effect on its perimeter's edge, DAYORIS Ombra/ door presents itself as the perfect crossover from modernistic design to traditional architectural styling.

Adaptable to any wall thickness, Ombra/ can be installed either proud or flush with adjacent walls. The Ombra/ system can be installed using a variety of reglet reveal sizes affording the homeowner varying options to display the floating door jamb.

Ombra/ doors are manufactured using the Ceam 3D Italian Concealed Hinge System and the Bonaiti Magnetic mortise.

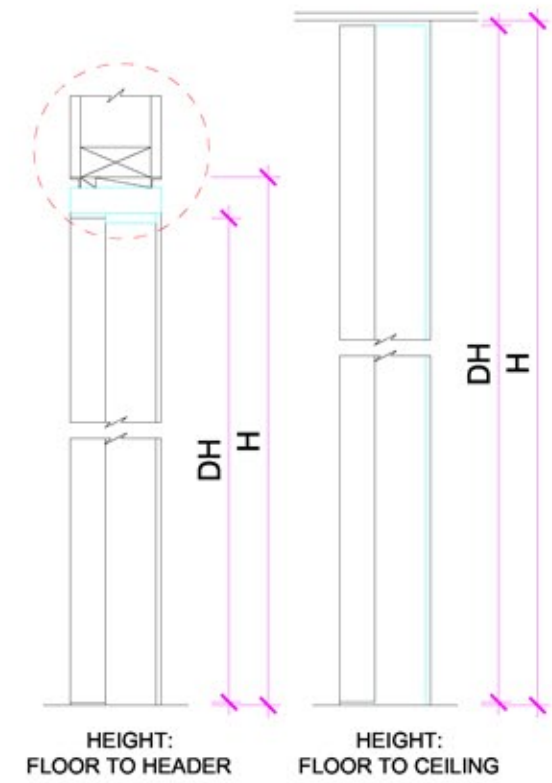
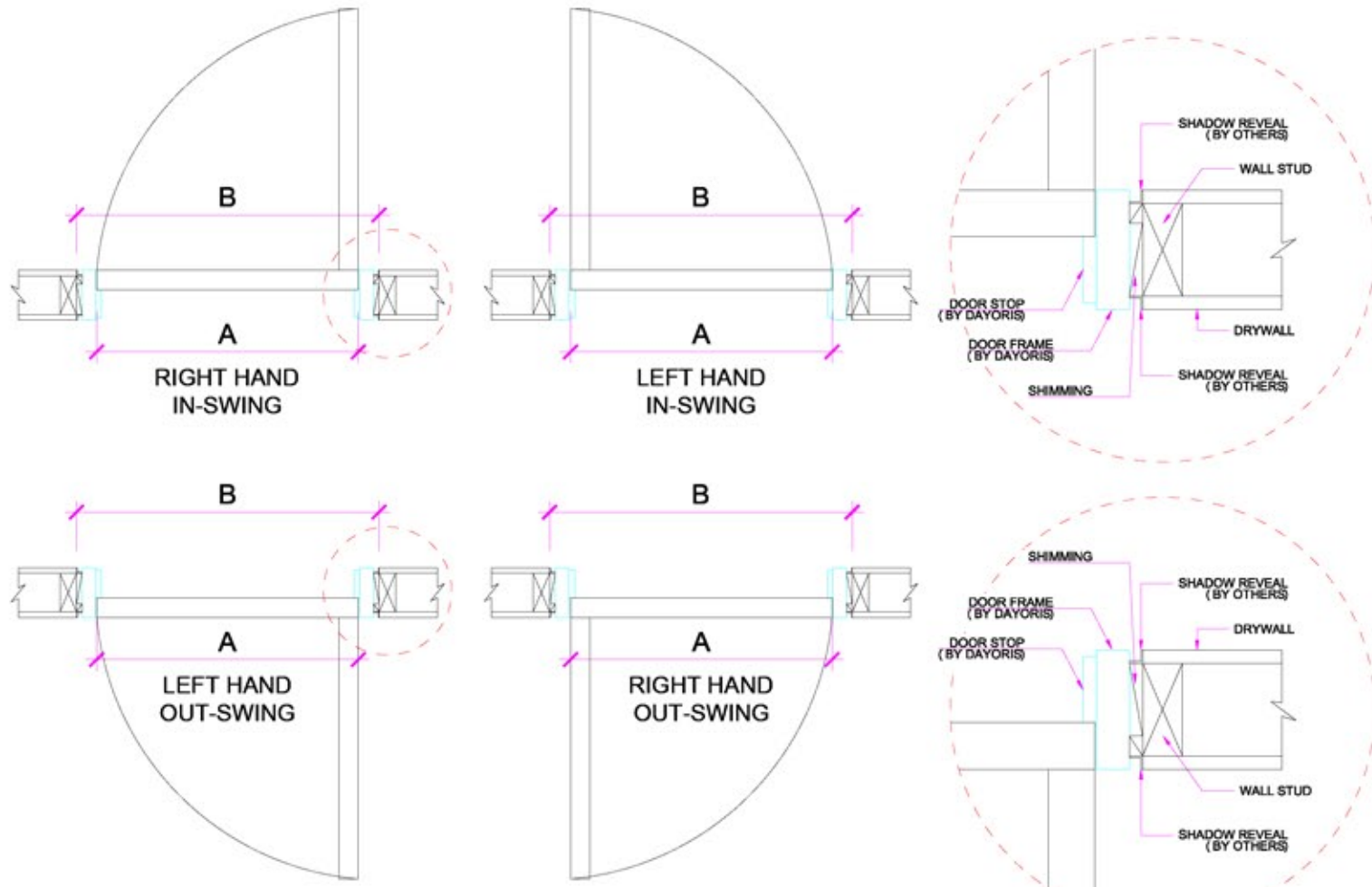
Technical Specifications:
Solid Core Door Slab
Thickness range -1-3/4"
Finish - Designer's choice
Hinges - CEAM Italia 3D adjustable
Frame - Wood finished
Handset - DAYORIS Italia
Mortise - Bonaiti Magnetic



Ombra/ white matte lacquer



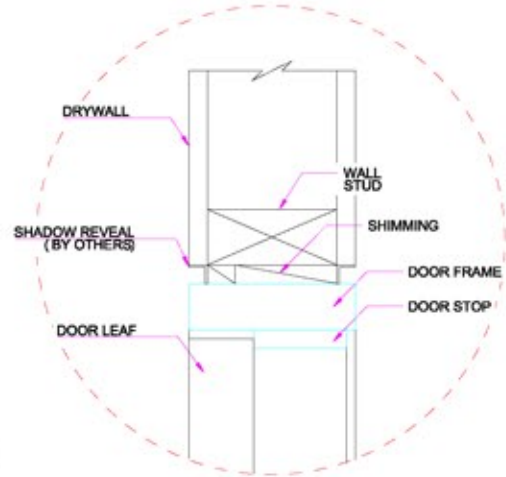
Ombra/ swing door detail



WIDTH FORMULA:
 $A = B - 3 \frac{1}{2}''$

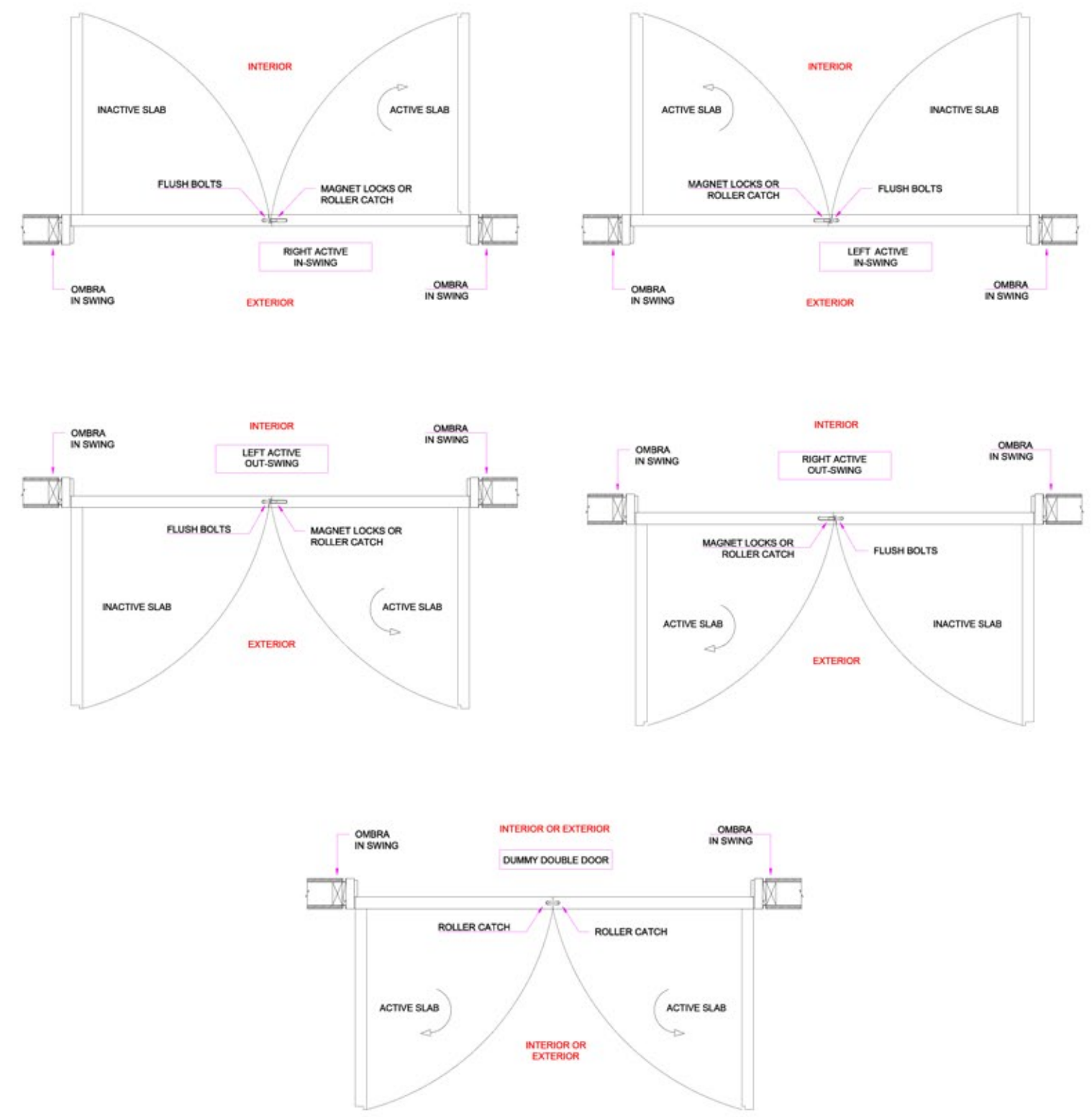
HEIGHT FORMULAS:
 FLOOR TO HEADER: $D.H. = H - 2''$
 FLOOR TO CEILING: $D.H. = H - 3 \frac{1}{8}''$

LEGEND:
 A = DOOR SIZE
 B = ROUGH OPENING WIDTH
 D.H. = DOOR HEIGHT
 H = ROUGH OPENING / FINISHED HEIGHT



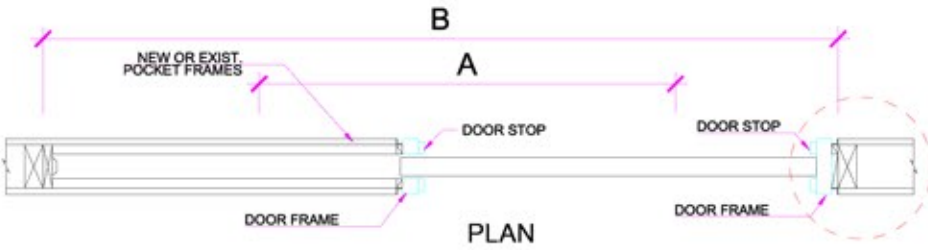
AVAILABLE IN DOUBLE DOOR SETS

Ombra/ swing door detail



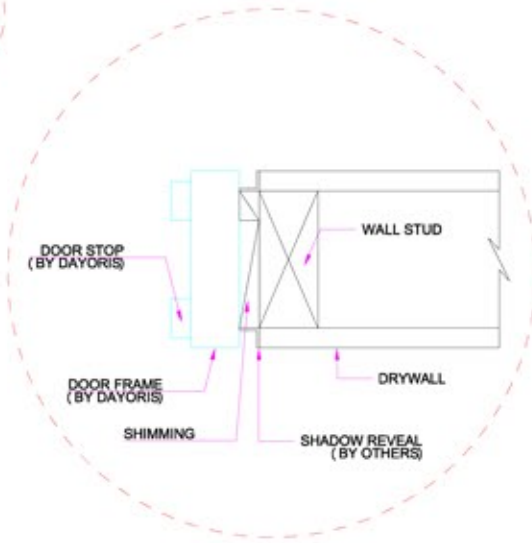
WIDTH
 DOOR WIDTH = $(ROUGH - 4'') / 2$

Ombra/ pocket door detail

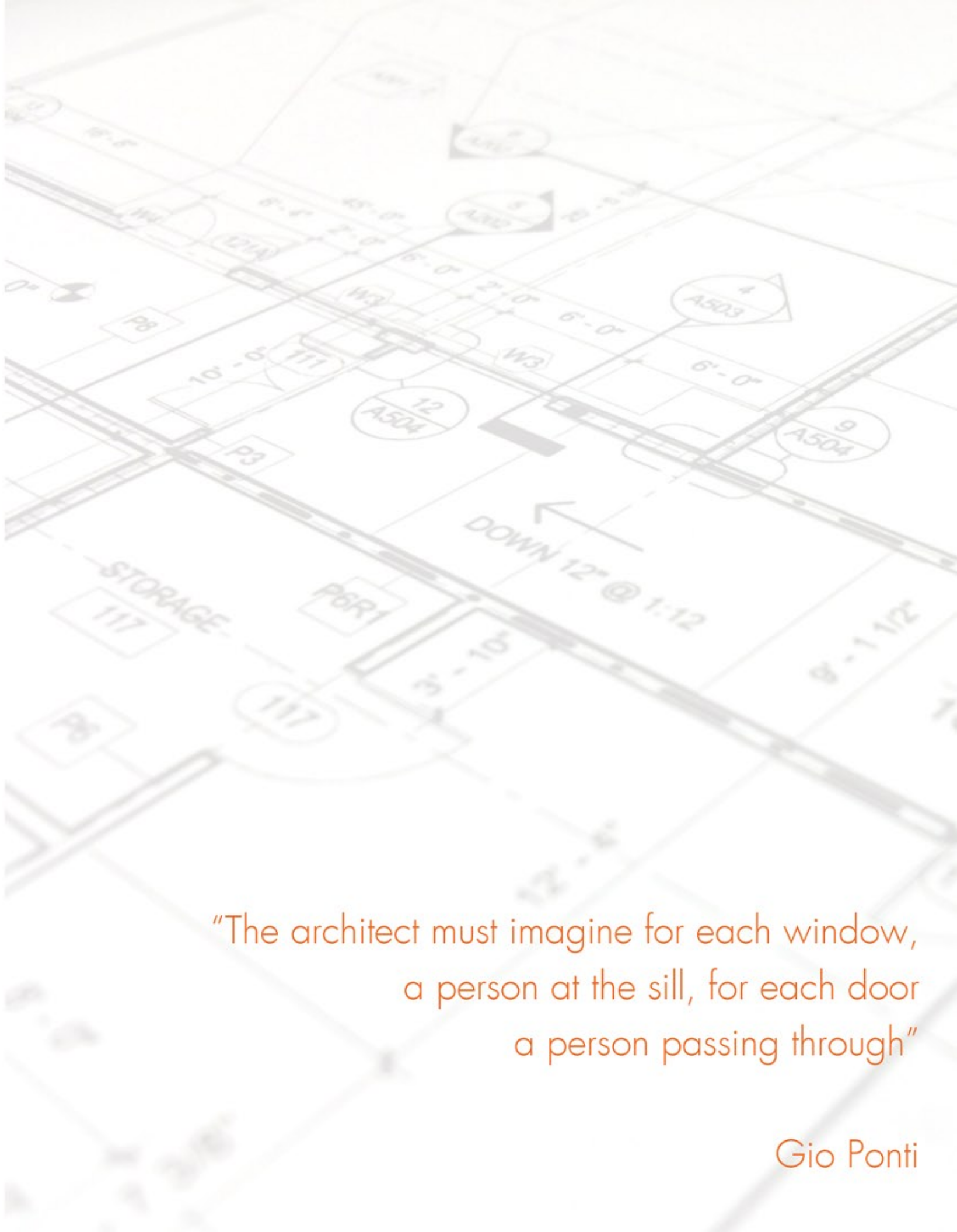
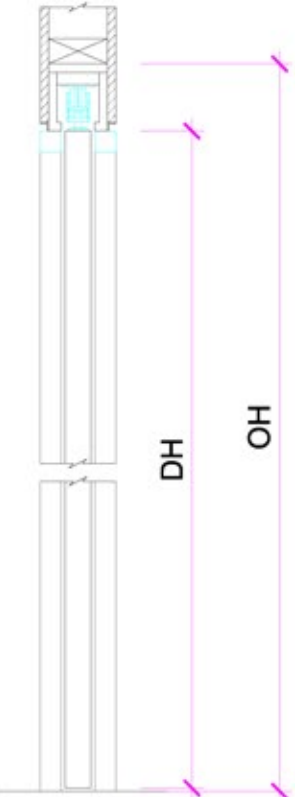
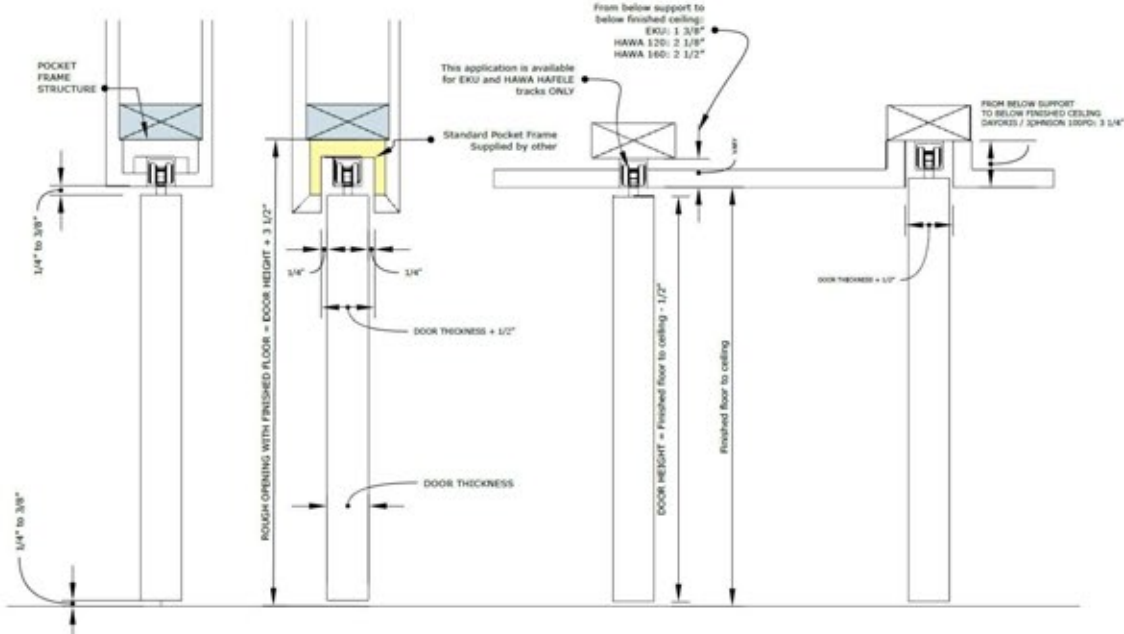


LEGEND:
 A = DOOR SIZE
 B = ROUGH OPENING WIDTH
 D.H. = DOOR HEIGHT
 H = ROUGH OPENING / FINISHED HEIGHT

WIDTH FORMULAS:
 $B = (A \times 2) + 2"$
 $A = (B - 2") / 2$



HEIGHT CONFIGURATIONS:



“The architect must imagine for each window, a person at the sill, for each door a person passing through”

Gio Ponti

Panel/

paneling and door application

DAYORIS has taken "doors flush with paneling" to a new level.

Our technicians have designed a door profile that enables a partner woodworker or millwork shop applying wall paneling to incorporate the same paneling finish to a DAYORIS Door while still maintaining a flush appearance with the adjoining wall. Doors can be delivered to the job-site prepared for contractors finishing, giving installers the opportunity to match these doors and hardware resulting in a consistent finish throughout the project.

Technical Specifications:

Solid Core Door Slab to be finished by Millworker

Thickness range - 1" to 1-3/4"

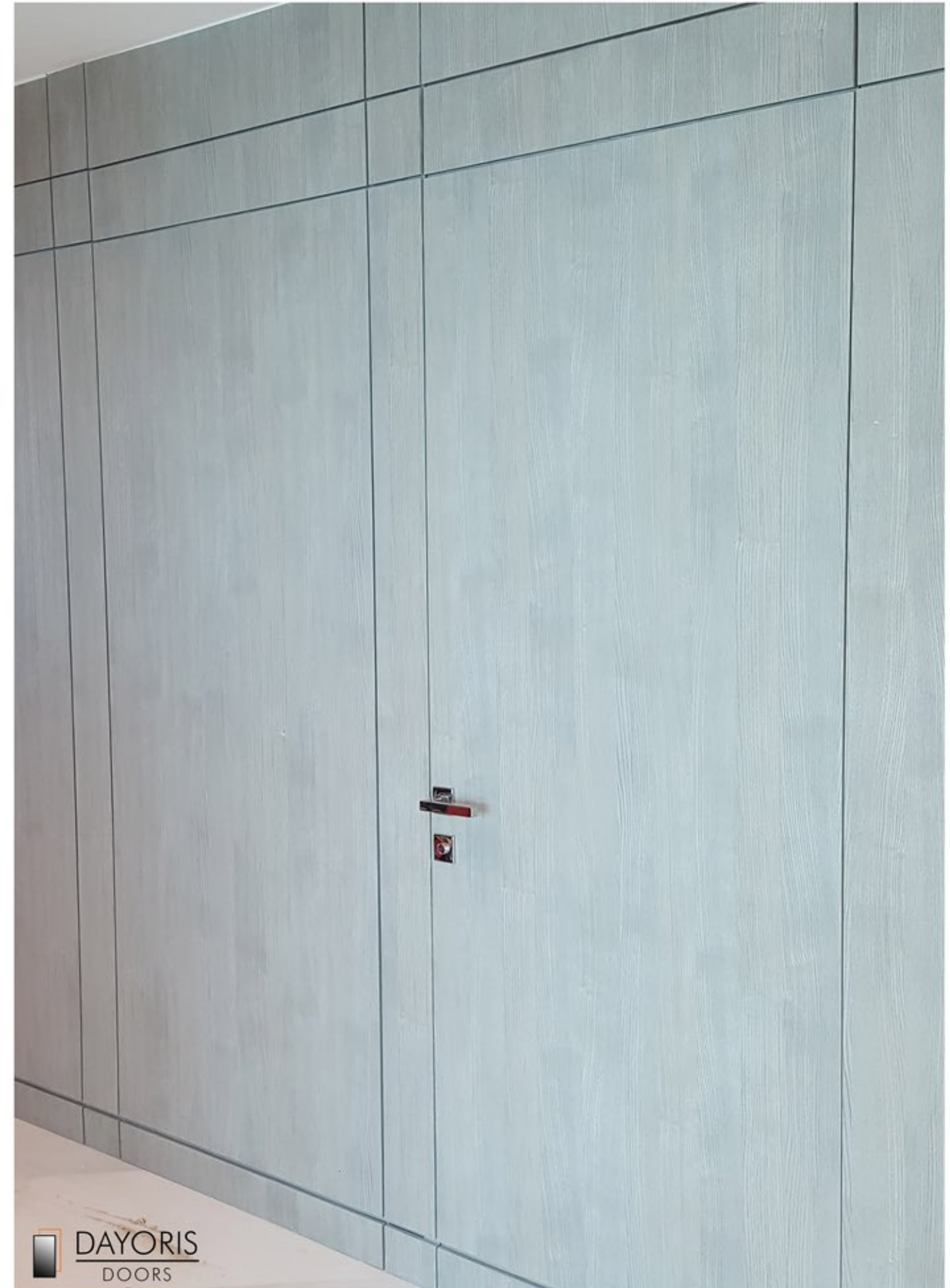
Finish - Primed

Hinges - CEAM Italia 3D adjustable

Frame - Aluminium

Handset - DAYORIS Italia

Mortise - Bonaiti Magnetic



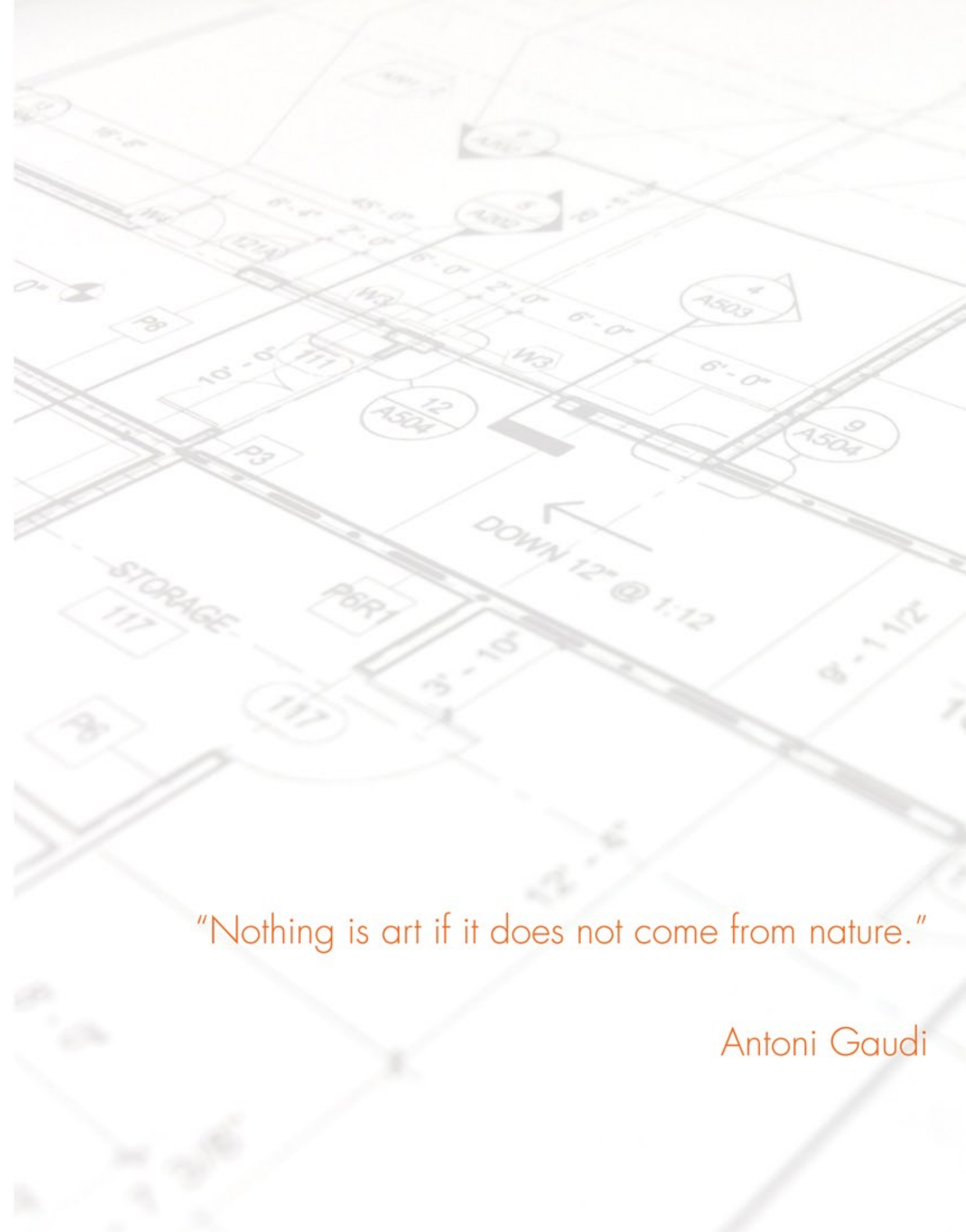


Panel/ Brown Orleans Oak with 1/8" reveals





Panels/ Wenge with 1/2" stainless steel reveals and invisible door application

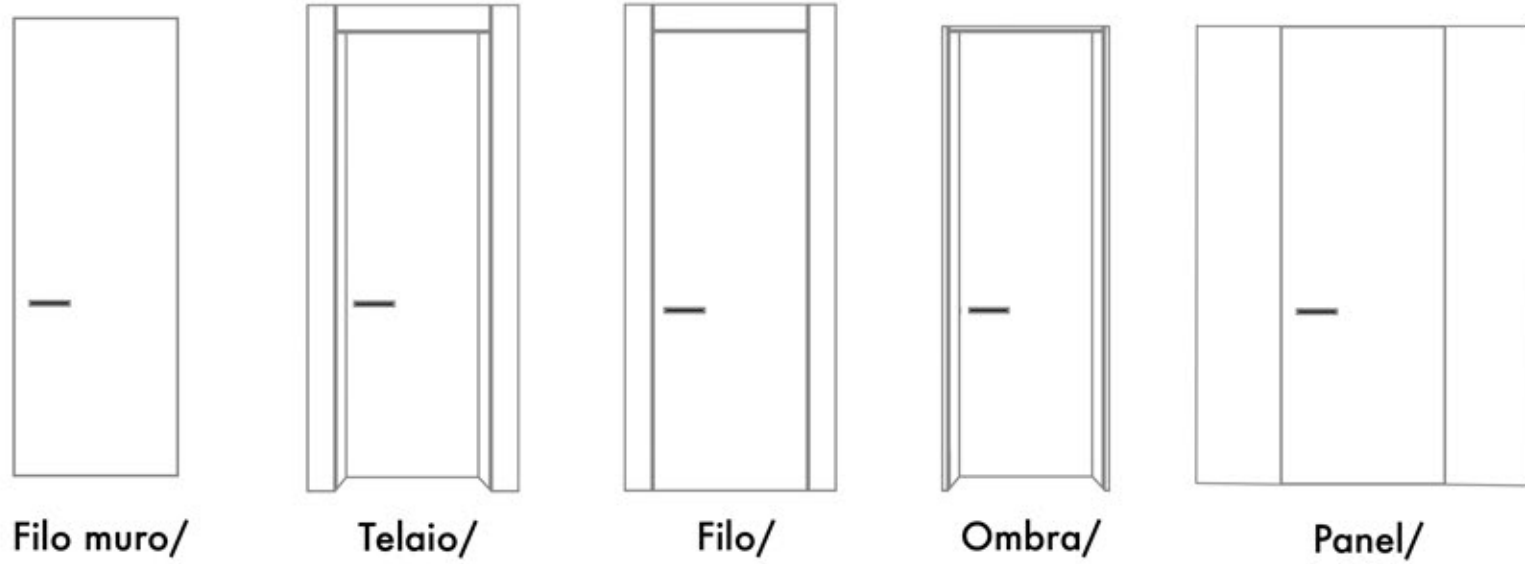


"Nothing is art if it does not come from nature."

Antoni Gaudi

Door profiles

Swing/
Pocket/
Bypass/
Pivot/
Euro system 1" doors/
Euro bifold 1" doors/



DOOR SLAB SIZE : up to 6' x 12' (custom systems available for wider applications)

FRAMES : Frameless profile, Wood frame, Metal frame

FINISH : Primed, Laminated, Lacquer, Wood veneer

THICKNESS : 1" to 1-3/4"

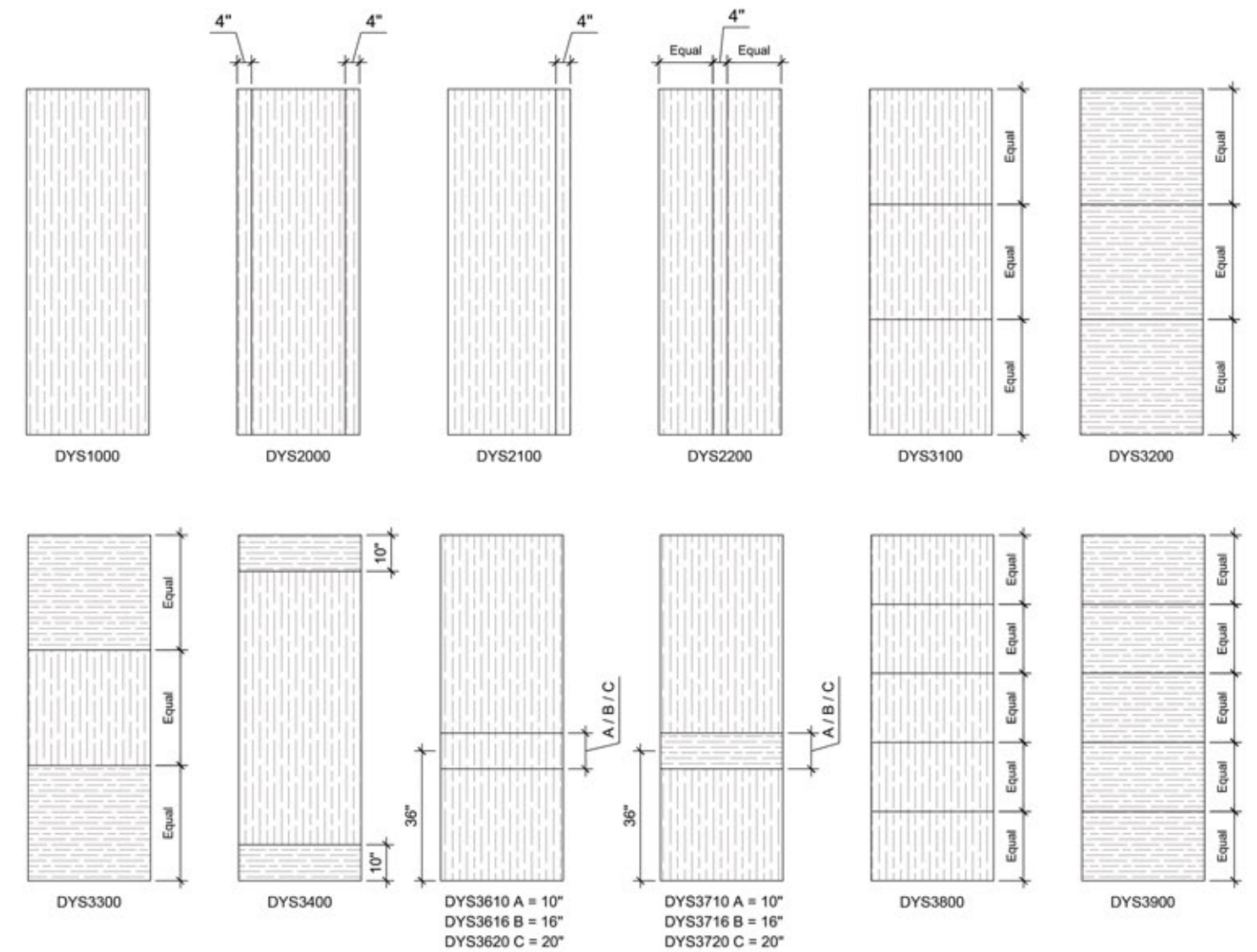
APPLICATIONS : Swing, Pocket, Sliding, Bypass, Bi-fold, Ghost, Barn

Pivot, Synchronyzed, Telescopic, Tri-fold

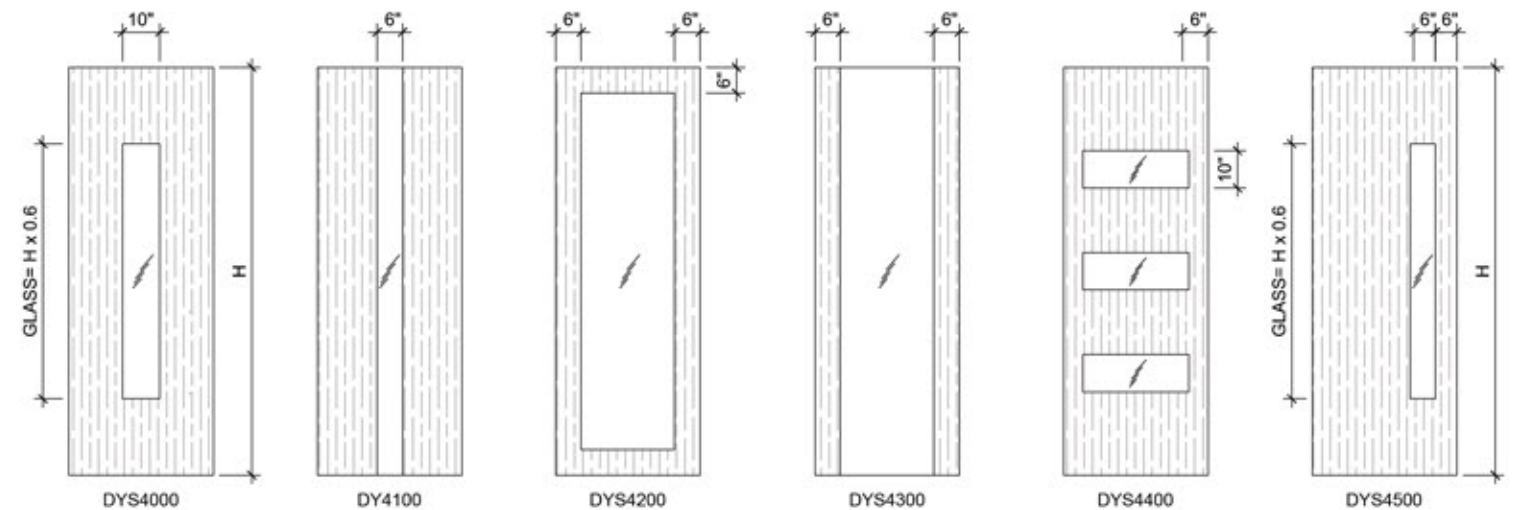


Designs

Reveal designs (available in 1/8" grooves or 1/2" aluminum inserts)



Glass designs (available in clear or laminated)



Hardware



ROUND SATIN



SQUARE SATIN



FLAT ROUND SATIN



TWIST SATIN



ROUND POLISHED



SQUARE POLISHED



FLAT ROUND POLISHED



TWIST POLISHED



ROUND BLACK



SQUARE BLACK

POCKET AND SLIDING DOOR HARDWARE
SATIN / POLISHED / BLACK



MAGNETIC LOCK

* If other hardware is specified, the magnetic lock is compatible with all major European brands (Valli & Valli, Olivari, Colombo, FSB...)



Finishes

- **Primed** Paint grade finish

- **Laminated Finishes** Our partners:



- **Matte Lacquer** Color match available

RAL 1000	RAL 1001	RAL 1002	RAL 1003	RAL 1004	RAL 1005	RAL 1006	RAL 1007	RAL 1011	RAL 1012	RAL 1013	RAL 1014	RAL 1015	RAL 1016	RAL 1017	RAL 1018
RAL 1019	RAL 1020	RAL 1021	RAL 1023	RAL 1024	RAL 1026	RAL 1027	RAL 1028	RAL 1032	RAL 1033	RAL 1034	RAL 1035	RAL 1036	RAL 1037	RAL 2000	RAL 2001
RAL 2002	RAL 2003	RAL 2004	RAL 2005	RAL 2007	RAL 2008	RAL 2009	RAL 2010	RAL 2011	RAL 2012	RAL 2013	RAL 3000	RAL 3001	RAL 3002	RAL 3003	RAL 3004
RAL 3005	RAL 3007	RAL 3009	RAL 3011	RAL 3012	RAL 3013	RAL 3014	RAL 3015	RAL 3016	RAL 3017	RAL 3018	RAL 3020	RAL 3022	RAL 3024	RAL 3026	RAL 3027
RAL 3028	RAL 3031	RAL 3032	RAL 3033	RAL 4001	RAL 4002	RAL 4003	RAL 4004	RAL 4005	RAL 4006	RAL 4007	RAL 4008	RAL 4009	RAL 4010	RAL 4011	RAL 4012
RAL 5000	RAL 5001	RAL 5002	RAL 5003	RAL 5004	RAL 5005	RAL 5007	RAL 5008	RAL 5009	RAL 5010	RAL 5011	RAL 5012	RAL 5013	RAL 5014	RAL 5015	RAL 5017
RAL 5018	RAL 5019	RAL 5020	RAL 5021	RAL 5022	RAL 5023	RAL 5024	RAL 5025	RAL 5026	RAL 6000	RAL 6001	RAL 6002	RAL 6003	RAL 6004	RAL 6005	RAL 6006
RAL 6007	RAL 6008	RAL 6009	RAL 6010	RAL 6011	RAL 6012	RAL 6013	RAL 6014	RAL 6015	RAL 6016	RAL 6017	RAL 6018	RAL 6019	RAL 6020	RAL 6021	RAL 6022
RAL 6024	RAL 6025	RAL 6026	RAL 6027	RAL 6028	RAL 6029	RAL 6032	RAL 6033	RAL 6034	RAL 6035	RAL 6036	RAL 6037	RAL 6038	RAL 7000	RAL 7001	RAL 7002
RAL 7003	RAL 7004	RAL 7005	RAL 7006	RAL 7008	RAL 7009	RAL 7010	RAL 7011	RAL 7012	RAL 7013	RAL 7015	RAL 7016	RAL 7021	RAL 7022	RAL 7023	RAL 7024
RAL 7026	RAL 7030	RAL 7031	RAL 7032	RAL 7033	RAL 7034	RAL 7035	RAL 7036	RAL 7037	RAL 7038	RAL 7039	RAL 7040	RAL 7042	RAL 7043	RAL 7044	RAL 7045
RAL 7046	RAL 7047	RAL 7048	RAL 8000	RAL 8001	RAL 8002	RAL 8003	RAL 8004	RAL 8007	RAL 8008	RAL 8011	RAL 8012	RAL 8014	RAL 8015	RAL 8016	RAL 9001
RAL 9002	RAL 9003	RAL 9004	RAL 9005	RAL 9006	RAL 9007	RAL 9010	RAL 9011	RAL 9016	RAL 9017	RAL 9018	RAL 9022	RAL 9023			

- **Wood veneer** Optional wire brush (light, medium, heavy), Custom stain and lacquer



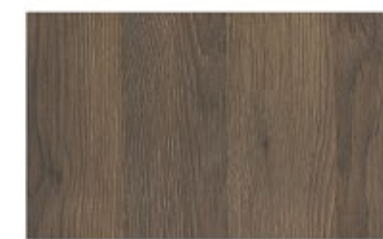
- Laminated Finishes (stock finishes, 8-10 weeks lead time)



Grey-Beige Gladstone Oak



Fineline Cream



Tobacco Gladstone Oak



Premium White Woodgrain



Pasadena Pine



Bramberg Pine



Verona Cherry



Mainau Birch



Platinum White



Beige



Pebble Grey



Cashmere Grey



Sand Zebrano



Coco Bolo



Mali Wenge



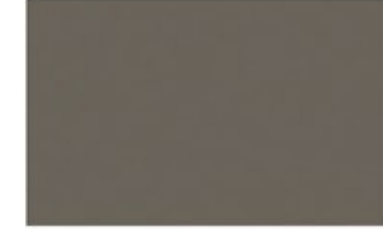
White Havana Pine



Light Grey



Stone Grey



Lava Grey



Diamond Grey



Black Havana Pine



Shorewood



Vicenza Oak



White Mountain Larch



Black Wood grain



Black



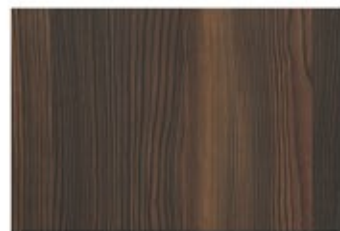
Anthracite Metallic Wood



Whitewood



Anthracite Mountain Larch



Thermo Pine



Tobacco Pacific Walnut



Tobacco Carini Walnut



Black-Brown Sorano Oak



Grey Bardonlino Oak



Brown Arizona Oak



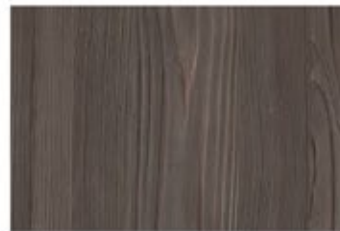
Grey-Beige Tossini Oak



Natural Dijon Walnut



White Cape Elm



Dark Brown Cape Elm



Bleached Carini Walnut



Light Lakeland Acacia



Brown Orleans Oak



Truffle Brown Denver Oak

Laminated Import Finishes (12 weeks lead time)



Diamon



Vernice



Norey



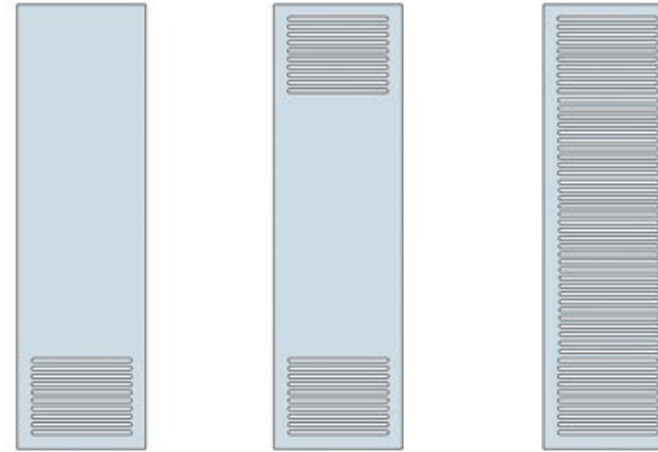
Cherry



Natur

Optional upgrades

Vented options / louvers



vent 1

vent 2

vent 3

Pocket frame structure



Automatic door bottom / Sound package



Soft close / Soft open track system



Keyed cylinder



eugust smart lock

