



MIAMI

Corporate / Showroom

1945 Hayes St,  
Hollywood, FL 33020

(305) 572-0707

info@dayoris.com

---

LOS ANGELES

Showroom

11817 Major St,  
Culver City, CA 90230

(213) 293-8820

california@dayoris.com

---

dayoris.com













# CORE VALUES

DAYORIS is led by a guiding vision that shapes every aspect of our work. We are unwavering in our pursuit of outstanding results, consistently exceeding expectations.

Our primary objective is to ensure that our clients reap the rewards of our dedication and exceptional craftsmanship, all while enjoying a fulfilling experience throughout the design journey.

As a corporation, our core mission is to foster enduring relationships with our employees, vendors, and clients. We do so with integrity and honesty, and we are committed to thriving as productive members of our community.







# GREEN INITIATIVE

DAYORIS has embraced a forward-thinking approach with our green initiative, which revolves around the strategic reduction of waste, the promotion of efficiency, and an dedicated commitment to environmental sustainability.

Our primary objective is to conduct our operations with the utmost sensitivity to the environment. We achieve this by consistently offering eco-friendly LEED certified products and services whenever they are accessible.

Over time, DAYORIS has solidified its position as a trailblazer in the realm of environmentally responsible offerings, particularly in the development of low-VOC (Volatile Organic Compound) and Formaldehyde-free products.



# MANUFACTURING |

At DAYORIS, we take immense pride in our position as pioneers in the realm of contemporary door design. Our dedicated team is continually engaged in conducting forward-thinking research to drive the creation of innovative door and frame designs.

In today's design landscape, the prevailing trend emphasizes clean lines and minimal visual embellishments. DAYORIS has successfully engineered systems that enable us to produce and install oversized doors, which operate as smoothly as standard-sized ones, all while discreetly concealing the essential structural components required for the safe and seamless function.

When visionary architects present us with novel and demanding concepts, DAYORIS eagerly embraces the challenge, taking charge of the design process. We harness cutting-edge drafting software to refine and manipulate the initial idea, followed by meticulous manufacturing, and ultimately, seamless on-site installation.

This well-honed process is a testament to our commitment to pushing the boundaries of contemporary design.















---

Reach new heights with DAYORIS frameless, floor to ceiling doors. The ultimate in minimalist design, these doors are installed without a traditional "header" and maximize the opening to achieve the greatest open space possible.

"I have always appreciated those who dare to experiment with materials and proportions"  
Zaha Hadid







Euro door/ white matte lacquer, vented option







Filo muro/ grey matte lacquer, floor to ceiling application



Filo muro/ primed, painted like the wall





Filo muro/ pivot and swing door, Black stained oak

"To create something exceptional your mindset must be relentlessly focused on the smallest detail"  
Giorgio Armani









Filo muro/ white matte lacquer, floor to ceiling application



Telaio/ Stained white oak, design: Shaker 4





Filo muro/ White matte lacquer



Filo muro/ Nogal Sienna





Custom door with applied stone







Filo muro/ Ebony with Gold inserts







Double doors/ custom stained wood veneer

"Simplicity is the ultimate form of sophistication"  
Leonardo Da Vinci





Swing doors/ custom stained wood veneer



Filo muro/ pivot and swing door, Black stained oak





Euro and Euro Bifold doors/ laminated import rovere ljubiana tenue











Filo muro/ Black matte lacquer



Filo muro/ White matte lacquer floor to ceiling







Filo muro/ primed





Our magnetic lock is compatible with all major European brands (Vali & Vali, Olivari, Colombo, FSB...)



"Trends disappear, style is eternal"  
Yves Saint Laurent











“When we build, let us think that we build forever”  
John Ruskin







Rossore/ Pivot Norey, design: Shaker 1



Filo muro/ white matte lacquer





The modern swing door is an example of the increased specialization in today's modern designs. We offers several different lines of swing doors.

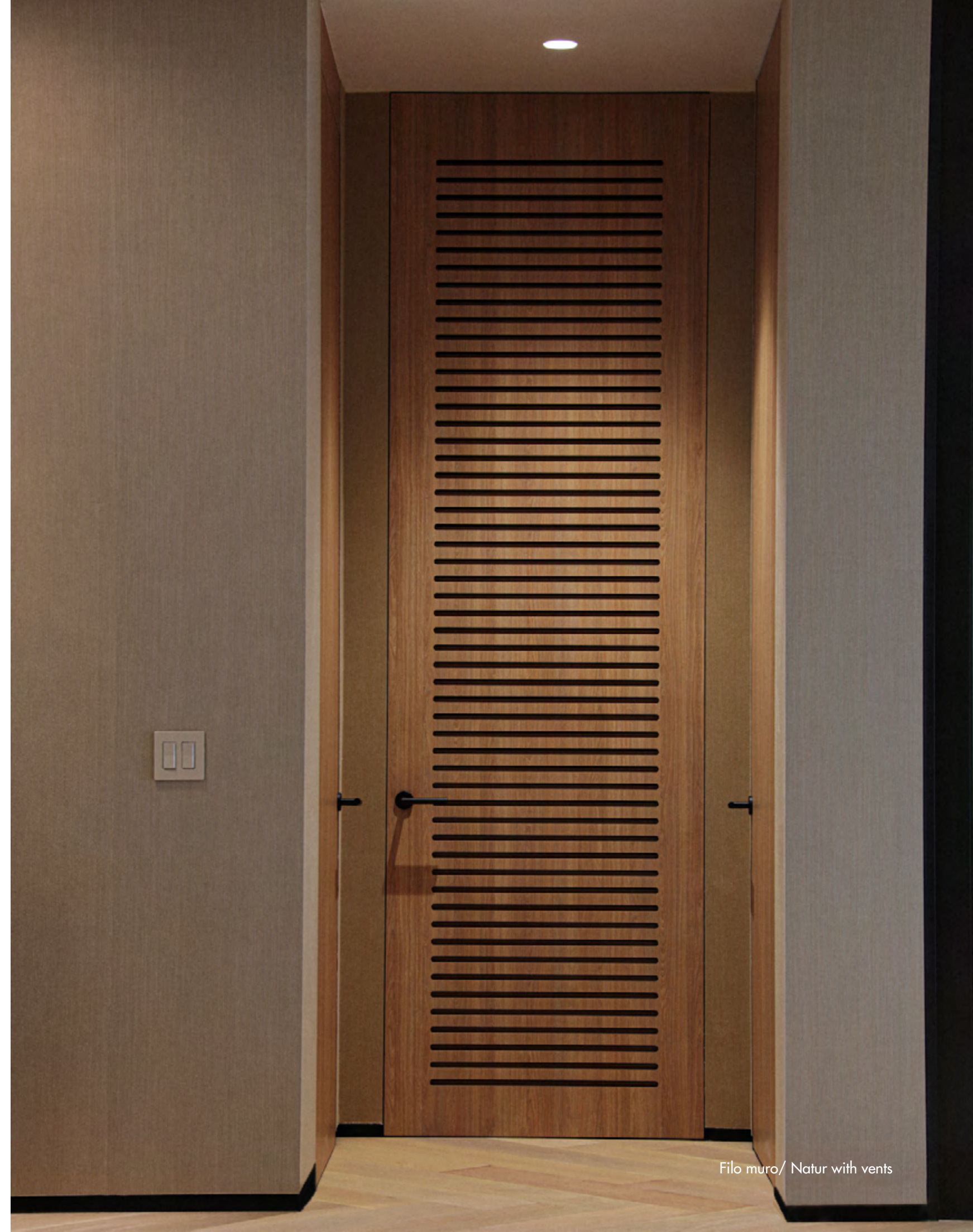




Ombra/ Oversized Pocket door, Wood veneer







Filo muro/ Natur with vents





Enhanced by the elegance of a jamb casting a shadow along its perimeter, the DAYORIS Ombra door seamlessly bridges the gap between modern design and traditional architectural styling.







The Telaio Swing Door is the DAYORIS interpretation of a conventional door profile. With traditional styling as its model, DAYORIS has redesigned the Telaio door using square flat casings.









Filo muro/ Black matte lacquer

Invisible door with Slat walls









Slat Wall and Columns

---

With the use of Slat wall paneling we see the task of formulating the exact sort of environment each and every client envisions.

Designer slat and wall paneling is a powerful trend in modern contemporary design.





Our invisible doors are commonly associated with modern and contemporary design trends where the emphasis is on clean lines and hidden hardware.









OUR TEAM





Designed by Danny Sorogon

## PRINCIPALS AND ACCOUNTING DEPARTMENT



**Adaleen / Estimating and Accounting Department**

Adaleen plays a critical role in financial management, cost estimation, budgeting, financial analysis, ensuring compliance within the company. Her work helps drive financial stability and effective resource allocation.

**Melissa / New Client Acquisitions**

Melissa's responsibilities encompass identifying & onboarding new clients and customers for DAYORIS products and services. Her role is crucial for expanding the company's business.



**Danniela / Accounting Department**

Danniela is in charge of managing resources efficiently, making informed strategic decisions and ensuring compliance with financial regulations. Her accurate and accounting practices are essential for our sustainability.

**Mariangel / Estimating and Sales Department**

Mariangel is responsible for thoroughly understanding the client's needs and objectives. Through effective communication and active listening, she gains a deep understanding of the client's project requirements.



**Scott / Principal**

Scott possesses strong leadership skills to guide DAYORIS towards its strategic goals and objectives. He has the ability to develop a clear, long-term vision for the growth and success within the door industry.

**Dan / Principal**

The role of Dan is multifaceted, involving strategic marketing, financial management, operational oversight, innovation and team leadership. His decisions and actions have a significant impact on the company's success.







**Javier / Lead Project Manager**

Javier is a versatile and dynamic Architect who plays an important role in the entire project lifecycle. From initiation to closure, Javier takes charge of overseeing every aspect and ensures that all objectives are met and stakeholders are satisfied.

**Juan / Lead Project Manager**

Juan brings a strong attention of detail to every task. With a focus on customer satisfaction, he excels in overseeing all aspects of projects, ensuring accuracy and upholding high quality standards throughout the project lifecycle.



**Antonio / Production Coordinator**

Antonio plays a vital role in overseeing and managing many aspects of the production process. His primary responsibility is to ensure that the production operations run smoothly and efficiently, meeting the company's quality standards.

**Javier V. / Design & Marketing**

Javier's role involves a combination of creative design skills and strategic marketing expertise. As an architect, he brings an integral perspective to Dayoris, understanding precisely what the company aims, assuring the project success.



**Moises / Lead West Coast Project Manager**

Moises assumes a pivotal role throughout the project journey, particularly in West Coast projects. From project inception to its successful conclusion, he takes charge of overseeing every aspect, ensuring the attainment of both client and Dayoris goals.





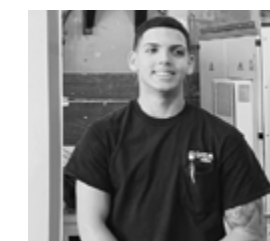


**Michel / Lead Shop Manager**

With 10 years at DAYORIS, Michel excels in organizational skills, efficiently managing tasks, prioritizing workloads, and maintaining attention to detail. As a skilled team manager, he inspires staff to achieve goals and deliver exceptional service.

**Johnny / Lead CNC Operator**

Jhonny has been with DAYORIS for three years, starting as an apprentice and working his way up to come a skilled CNC machinist. Advanced machinist operation, technical expertise, attention to detail, cutting edge technology.

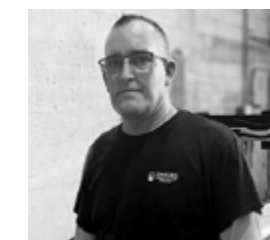


**Carmelo / Lead Shipping Division**

Carmelo has taken the helm of the Shipping division, bringing his invaluable expertise to ensure the safe and secure delivery of the doors. Global Shipping Capabilities, timely delivery with utmost care, reliable and secure shipping solutions.

**Angel / Lead Framing Division**

Angel is a key figure in the construction and supervision of door frames. Utilizing high-end machinery, Angel ensures precision in measurements, shaping, and assembly. Angel and his team possess a keen eye for accuracy and precision.



**Ernesto / Assistant Shop Manager**

Ernesto is a key contributor, providing vital support in day-to-day operations, staff supervision, and ensuring a well-organized shop environment. His unwavering dedication and effort are crucial in achieving the company's goals and ensuring the success of projects.

**Jose / Production Manager Door Division**

Jose assumes a diverse array of responsibilities to guarantee the seamless and effective functioning of the production process. He establishes and upholds quality control protocols, ensuring that the doors manufactured meet and also surpass industry standards.







**German / Quality Control**

German is the gatekeeper of product excellence, ensuring that every door that leaves Dayoris meets the highest standards. The satisfaction of knowing that his attention to detail directly contributes to the safety, functionality, and aesthetics of the final product.

**Leduan - Finisher**

Leduan assumes the role of maintaining stringent quality standards at every stage of the finishing process. His duties include thorough inspection of completed work, prompt identification, and correction of any defects. All aimed at guaranteeing DAYORIS specifications.



**Arlen / Framing Division**

Arlen plays a hands-on role in the production of door frames. He needs to combine technical understanding, attention to detail, physical capability, and effective communication to contribute to the division's success while prioritizing safety and quality.

**Rolando / Service Technician**

Rolando possess a combination of technical skills, attention to detail, problem-solving abilities, and a commitment to safety and customer service. These characteristics are essential for delivering high-quality door installations and ensuring customer and project satisfaction.



**Geos / Painter**

Geos is an important member of our team. He has a strong foundation in painting techniques, including brushwork, spraying, and staining. He is able to apply paint evenly and smoothly to achieve a high quality finish on doors.

**Pablo / Lead Craftsman**

Pablo, our lead craftsman, is the go-to expert for tasks that demand a level of artistry and precision beyond what machinery can achieve. His specialty lies in employing unique and refined craftsmanship techniques to ensure that every project is executed exceptionally well.



Custom Project Delmare Place in Fort Lauderdale





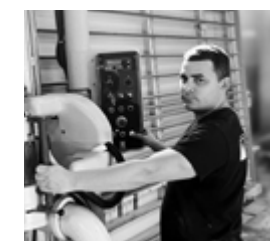


**Carlos / Service Technician**

Carlos embodies a unique blend of technical expertise, meticulous attention to detail, problem-solving capabilities, and a unwavering dedication to both safety and customer satisfaction. These qualities are fundamental to achieving excellence in door installations.

**Alberto / Door Manufacturing Division**

Alberto's craftsmanship guarantees that every door is meticulously crafted according to exact specifications, encompassing precise measurements, alignments, and finishing details. His pivotal role is instrumental in securing the division's success.



**Oswaldo / Lead Painter**

Oswaldo is accountable for maintaining high-quality standards throughout the painting process. He inspects completed work, identifies any defects, ensuring that the finished product meets the required specifications.

**Amaury - Frame Assembly**

Amaury's role is of utmost importance. He is responsible for crafting high-quality door frames that significantly enhance the durability and functionality of the finished doors. His commitment ensures only the best frames.



**Ivan / Painter**

Attaining exceptional results as a painter like Ivan requires a blend of skills, meticulous attention to detail, and the utilization of suitable tools and materials. The goal is delivering outstanding outcomes with a top tier finish that aligns seamlessly with DAYORIS standards.



# PRODUCTS





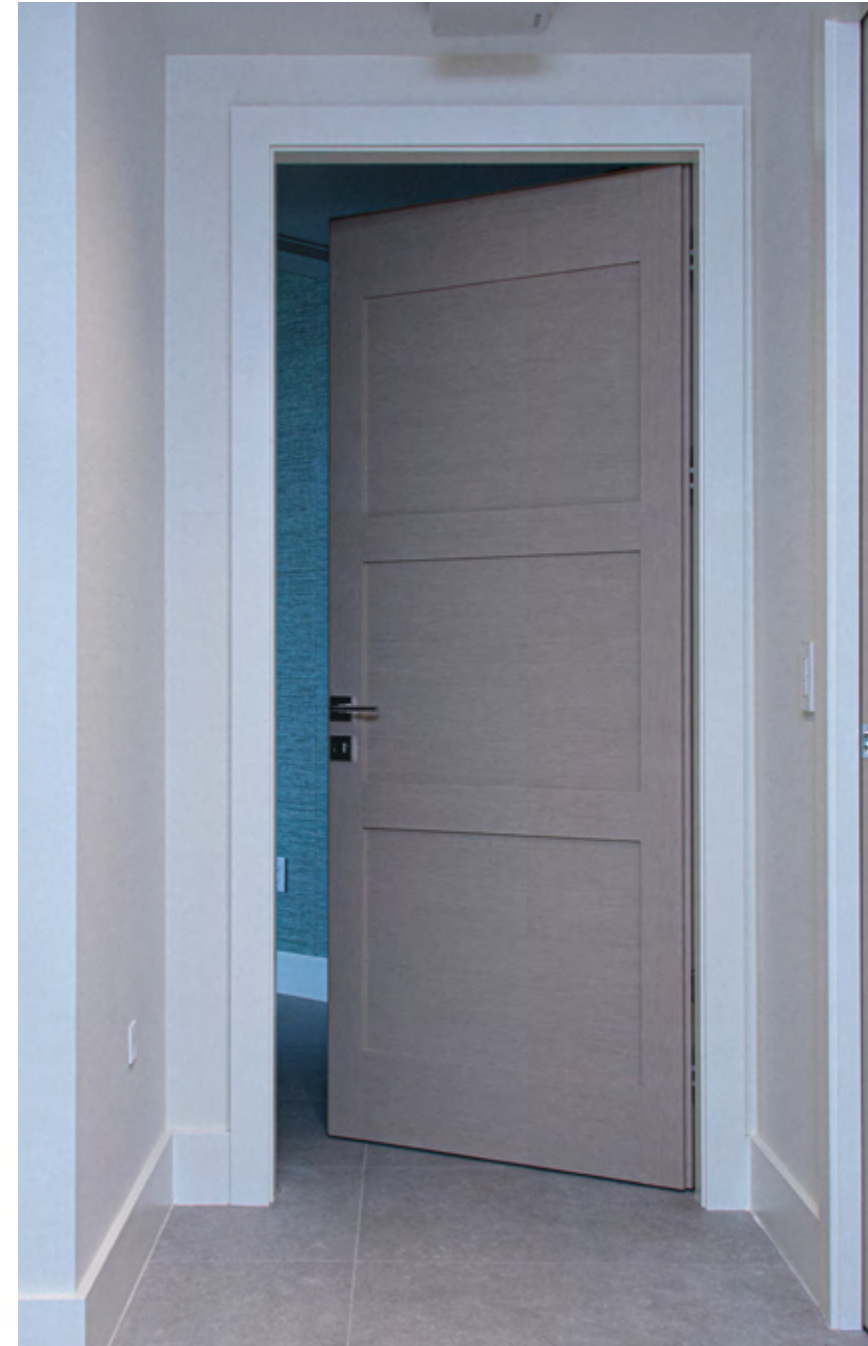
FILO MURO/ doors flush with the wall



ROSSORE/ doors flush with casing



TELAIO/ doors with raised casing

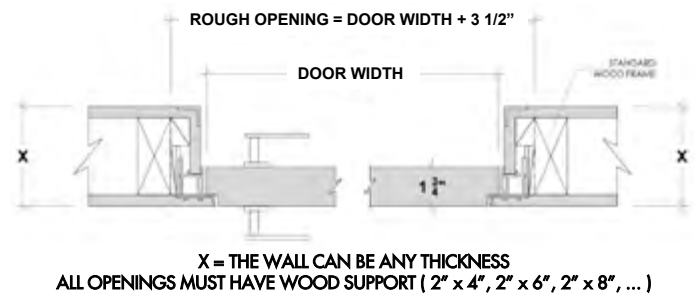


OMBRA/ floating jamb with shadow reveal

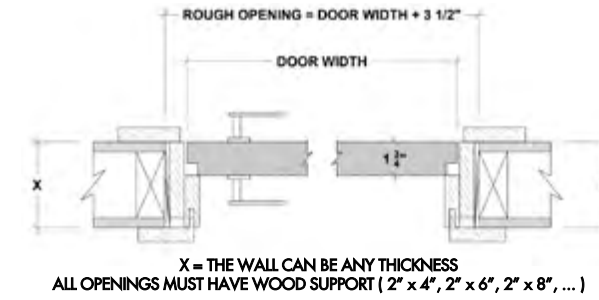




## Filo muro/ frameless, flush with the wall



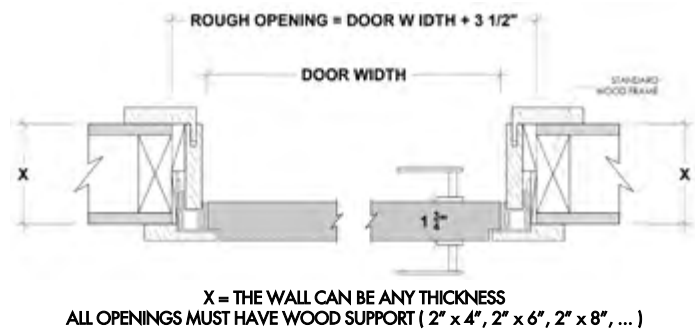
## Telaio/ doors with raised casing



Standard Installation      Flush with Drywall Installation



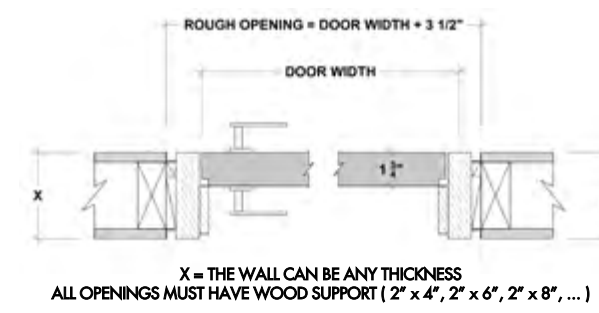
## Rossore/ doors flush with casing



Standard Installation      Flush with Drywall Installation



## Ombra/ floating jamb with shadow reveal

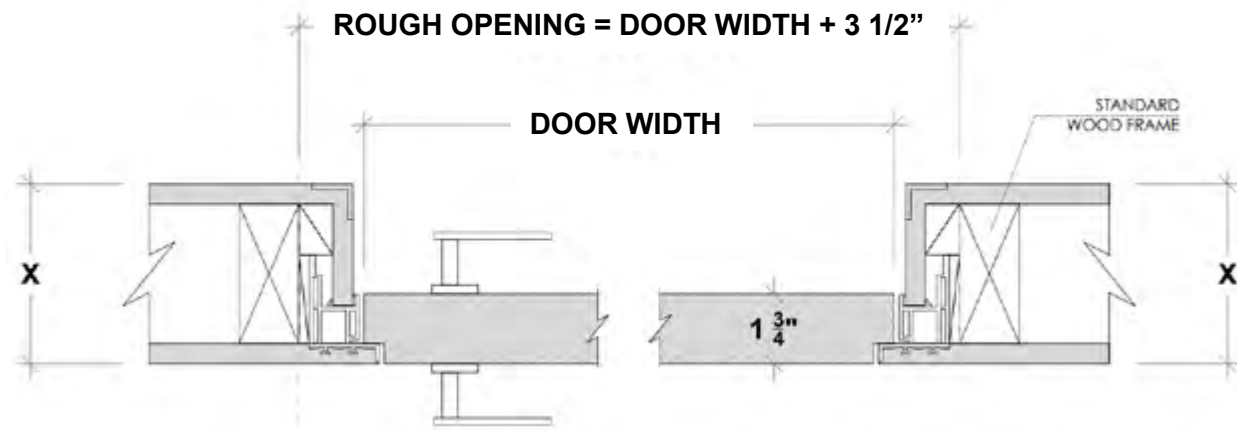


Standard Installation      Jamb Proud of the wall Installation





# Filo muro/ frameless, flush with the wall



X = THE WALL CAN BE ANY THICKNESS  
ALL OPENINGS MUST HAVE WOOD SUPPORT ( 2" x 4", 2" x 6", 2" x 8", ... )

## FILO MURO/ SPECIFICATIONS:



FILO MURO/  
SWING DOORS PDF



FILO MURO/  
POCKET DOORS PDF



FILO MURO/  
EURO DOORS PDF



FILO MURO/  
BIFOLD DOORS PDF



FILO MURO/  
BYPASS DOORS PDF



FILO MURO/  
PIVOT DOORS PDF



FILO MURO/  
GHOST DOORS PDF



FILO MURO/  
BARN DOORS PDF



FILO MURO/  
REGLET PDF



FILO MURO/  
FINISHING INSTRUCTIONS PDF



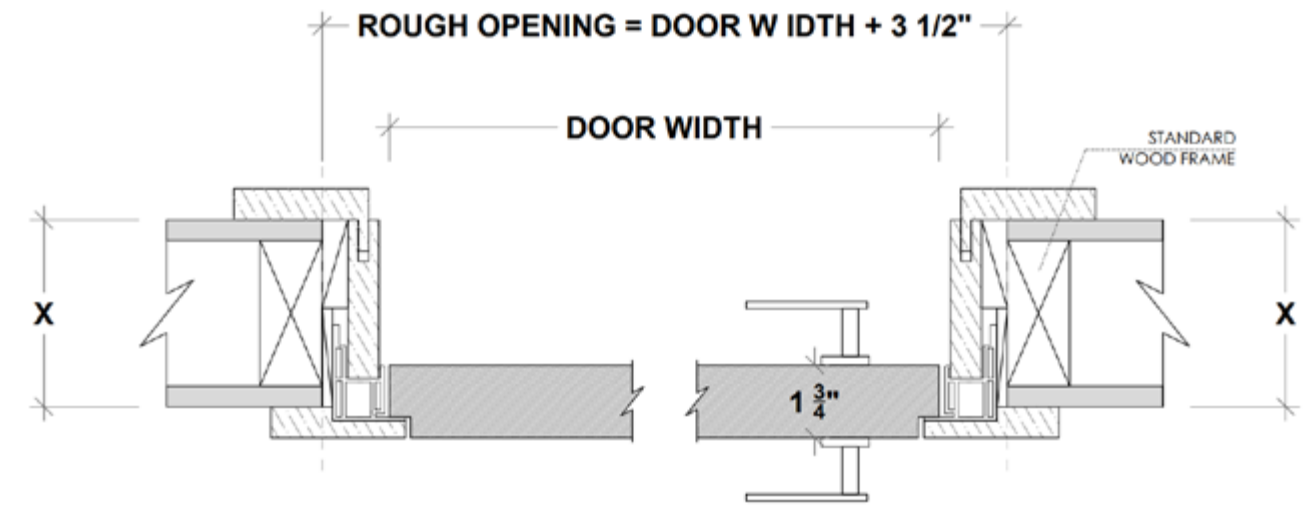
Filo muro/ Natur, floor to ceiling application





DETAILS

# Rossore/ doors flush with casing



X = THE WALL CAN BE ANY THICKNESS  
ALL OPENINGS MUST HAVE WOOD SUPPORT ( 2" x 4", 2" x 6", 2" x 8", ... )

## ROSSORE/ SPECIFICATIONS:



ROSSORE/  
SWING DOORS PDF



ROSSORE/  
POCKET DOORS PDF



ROSSORE/  
EURO DOORS PDF



ROSSORE/  
BIFOLD DOORS PDF



ROSSORE/  
BYPASS DOORS PDF

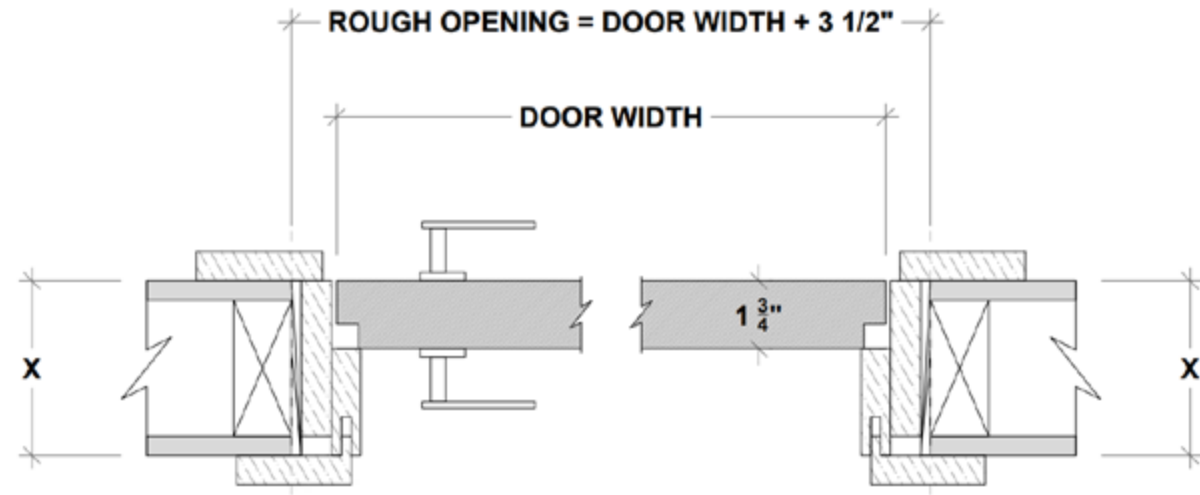


ROSSORE/  
PIVOT DOORS PDF





# Telaio/ doors with raised casing



X = THE WALL CAN BE ANY THICKNESS  
ALL OPENINGS MUST HAVE WOOD SUPPORT ( 2" x 4", 2" x 6", 2" x 8", ... )

## TELAIO/ SPECIFICATIONS:



TELAIO/  
SWING DOORS PDF



TELAIO/  
POCKET DOORS PDF



TELAIO/  
EURO DOORS PDF



TELAIO/  
BIFOLD DOORS PDF



TELAIO/  
BYPASS DOORS PDF



TELAIO/  
PIVOT DOORS PDF



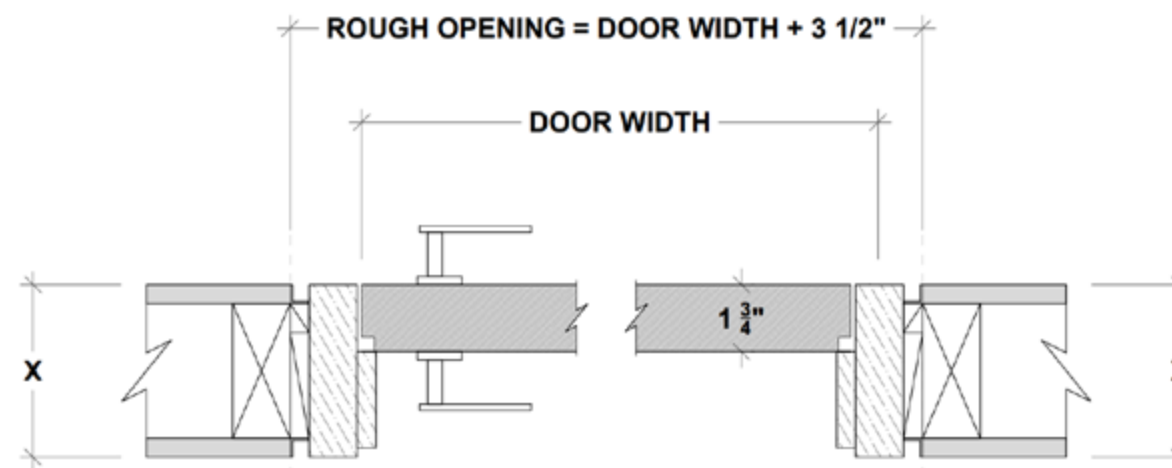
Telaio/ Stained white oak, design: Shaker 4





DETAILS

Ombra/ floating jamb with shadow reveal



X = THE WALL CAN BE ANY THICKNESS  
 ALL OPENINGS MUST HAVE WOOD SUPPORT ( 2" x 4", 2" x 6", 2" x 8", ... )

OMBRA/ SPECIFICATIONS:



OMBRA/  
 SWING DOORS PDF



OMBRA/  
 POCKET DOORS PDF



OMBRA/  
 EURO DOORS PDF



OMBRA/  
 BIFOLD DOORS PDF



OMBRA/  
 BYPASS DOORS PDF



OMBRA/  
 PIVOT DOORS PDF





# Panel/ doors and paneling applications



Outswing Profile

Inswing Profile



## PANEL/ SPECIFICATIONS:



PANEL/  
SWING DOORS PDF



PANEL/  
EURO DOORS PDF



PANEL/  
BIFOLD DOORS PDF



PANEL/  
PIVOT DOORS PDF







# THE DAYORIS ADVANTAGE

Imported and Domestic fabrication.

Up to 6' wide and 12' tall.

A complete door package.  
(finished door, frame, complete hardware set)

Custom built to specifications.

Expert support staff.

Floor to ceiling application.

Complete vertical process.  
(design / manufacturing / installation)

## THE PROCESS



### 1. FLOOR PLAN / DOOR SCHEDULE

Client sends basic information of the project, floor plan, specifications.



### 2. PROPOSAL SENT WITHIN 24 / 48 HOURS

Once we receive project details, our estimators work on the proposal within 48 hours.



### 3. PROPOSAL APPROVED

Dayoris received a formal approval by mail. Contact information is in the proposal.



### 4. PROJECT PLANNER ASSIGNED

Email intro and set up a Zoom meeting, details, rough openings and specs.



### 5. MASTERSHEET ALIGNMENT

Creation of a Mastersheet with all project specifications, details.



### 6. DOOR PRODUCTION

Once approved, door production begins.



### 7. SHIPPING SERVICE

Shipping arranged throughout the US. and abroad.



### 8. INSTALLATION PROCESS

We offer installation and technical support.



THE DAYORIS DIFFERENCE

SOLID CORE



MAGNETIC LOCKSET



CONCEALED HINGE



PRIME  
LACQUER  
LAMINATED  
WOOD VENEER







ARTISANAL



# Door Profiles

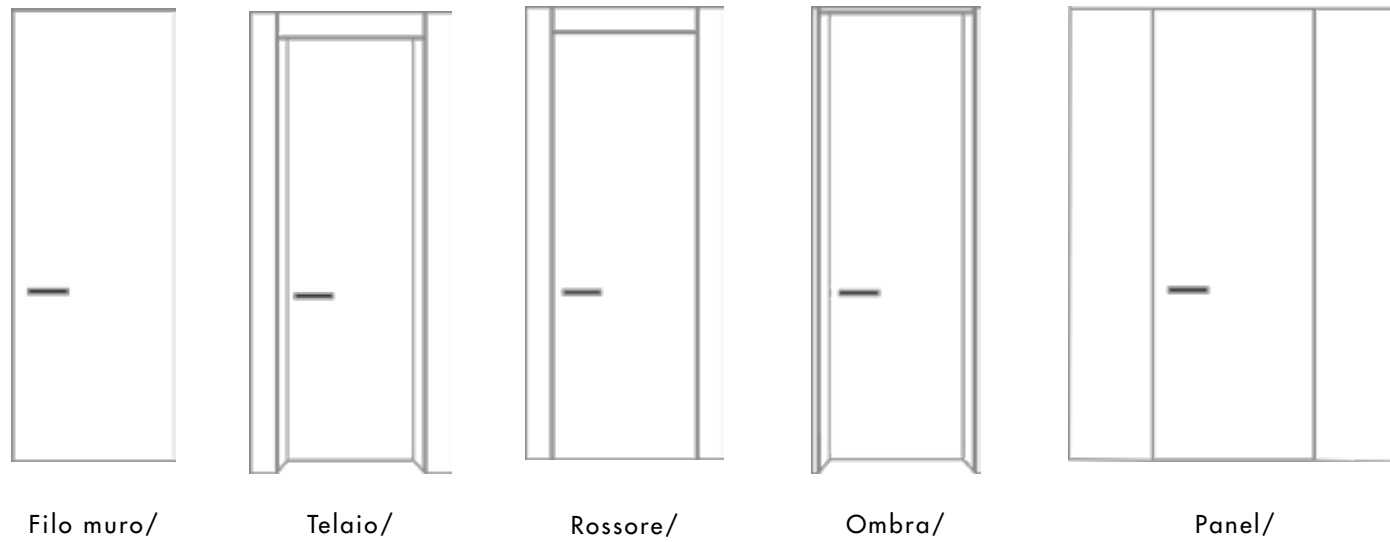
Premium Interior Door Solutions

All of our doors are tailor-made to client specifications, allowing for virtually any size, style, or finish.

Technical Specifications:

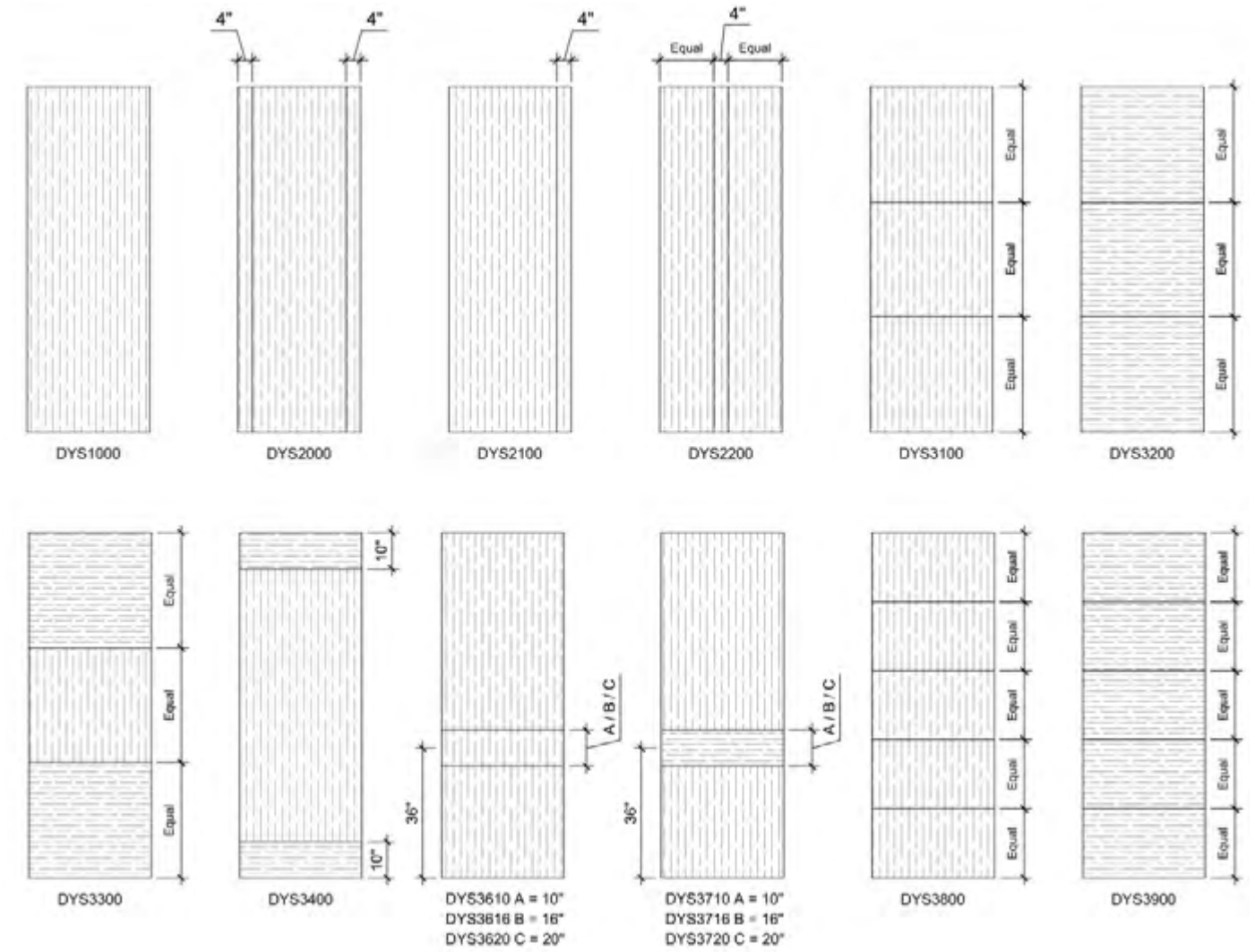
- Door Slab size up to 6'x12' (Custom Systems available for wider applications)
- Primed, Laminated, Lacquer and Wood Veneer finishes.
- Frames: Frameless profile, wood and metal.
- Thickness from 1" to 1 3/4"
- Standard and Floor to ceiling applications.

Swing/ Pivot/ Pocket/ Bypass/ Euro System 1" Doors/ Euro Bifold 1" Doors/

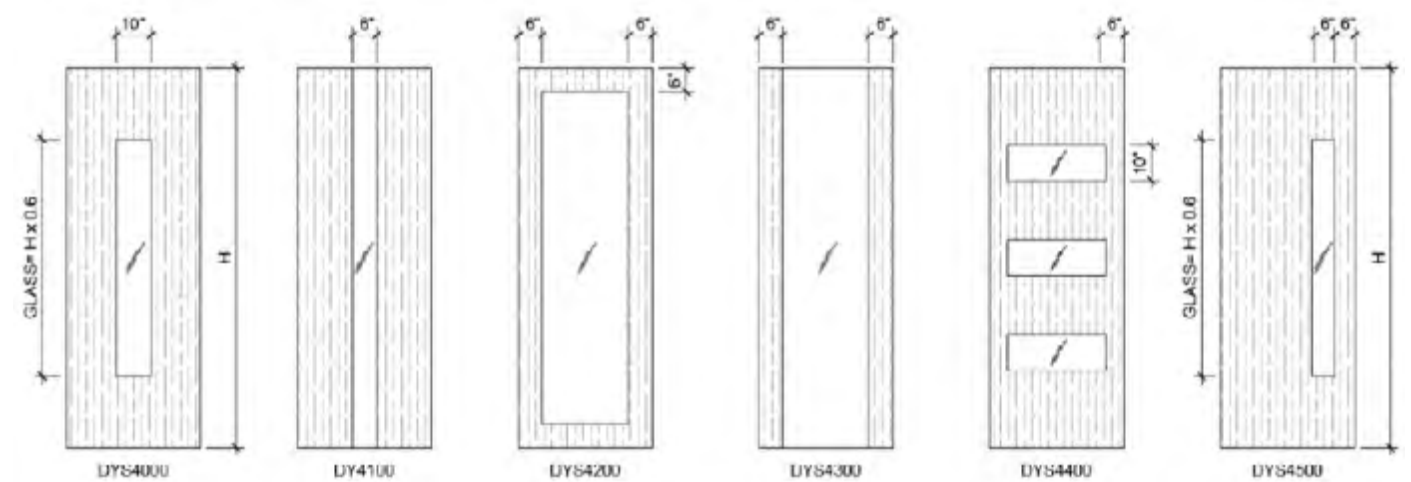


# Designs

Reveal Designs (available in 1/8" grooves or 1/2" aluminum inserts)



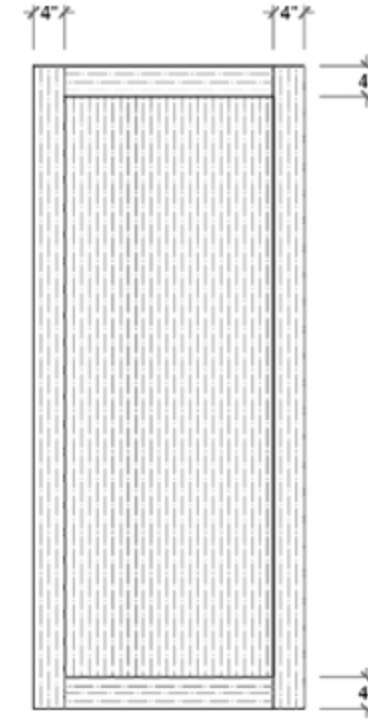
Glass Designs (available in clear or laminated)



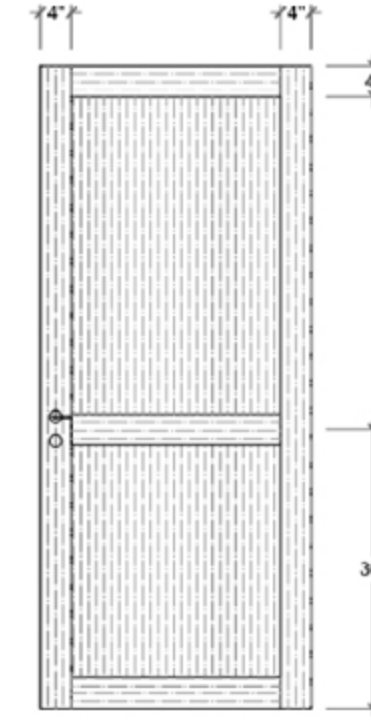




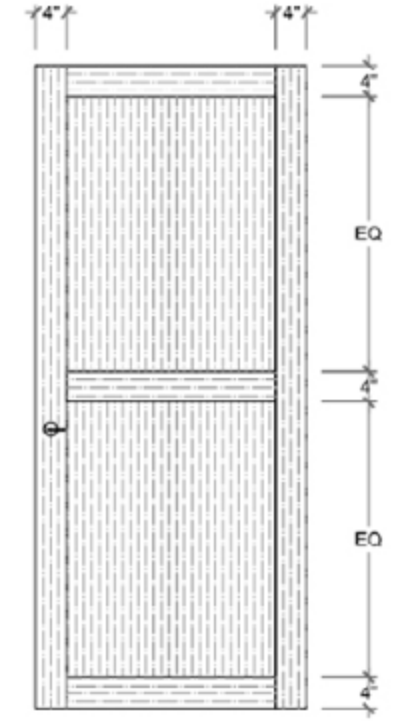
## Shaker Designs



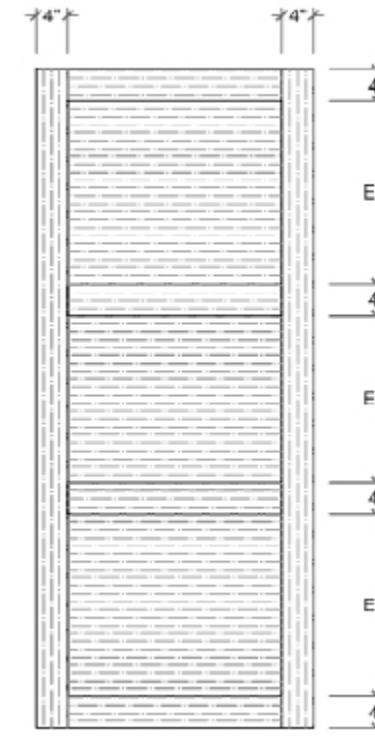
Shaker 1



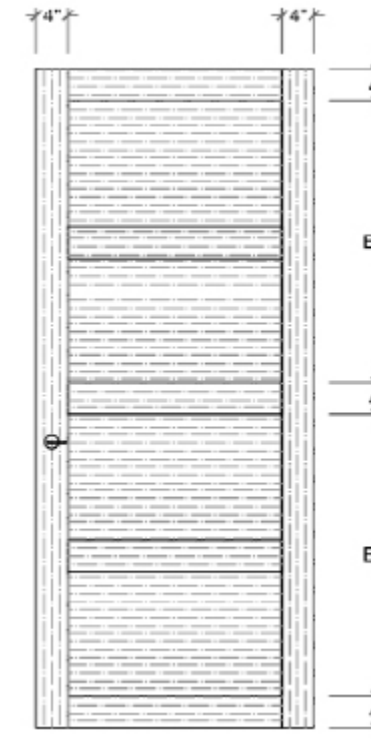
Shaker 2



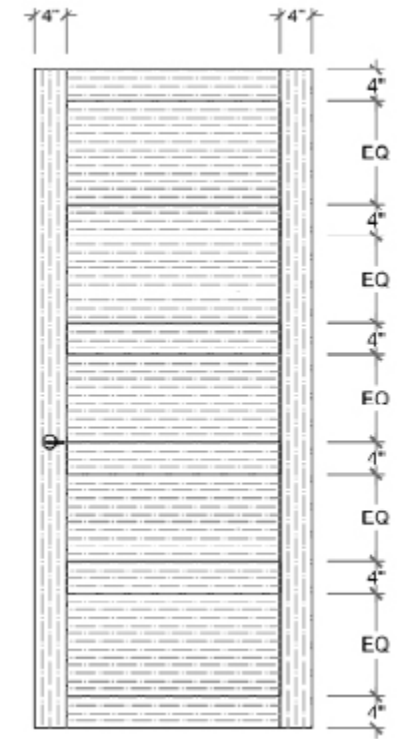
Shaker 3



Shaker 4



Shaker 5

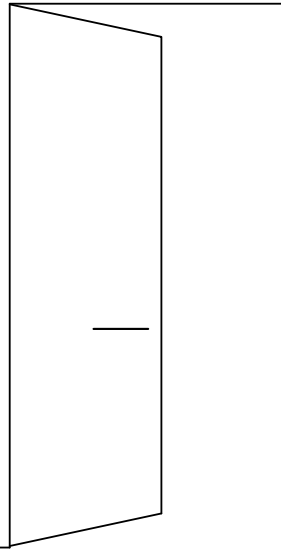


Shaker 6

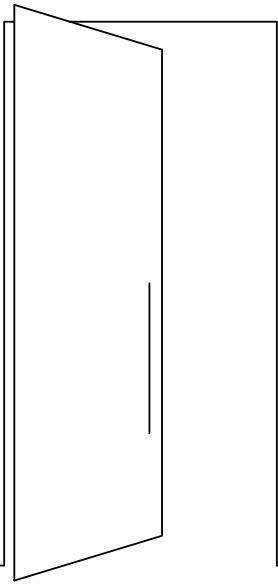




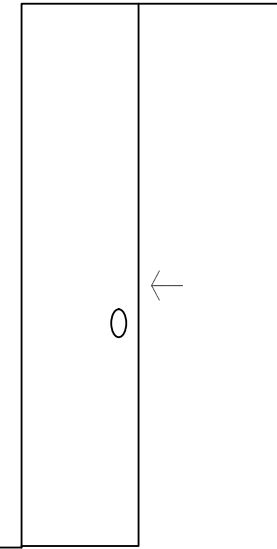
Swing



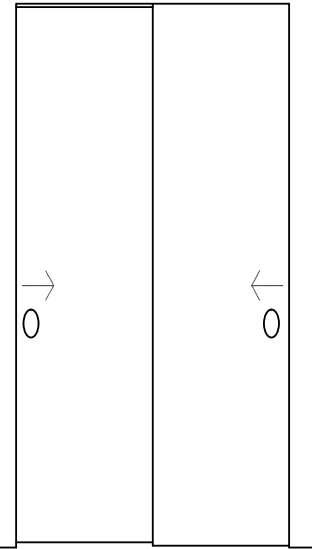
Pivot



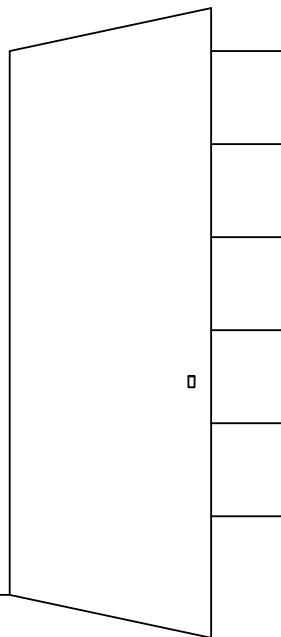
Pocket



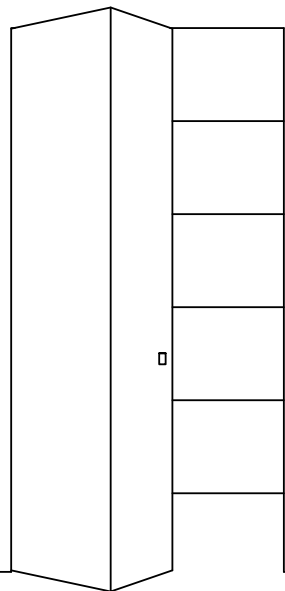
Bypass



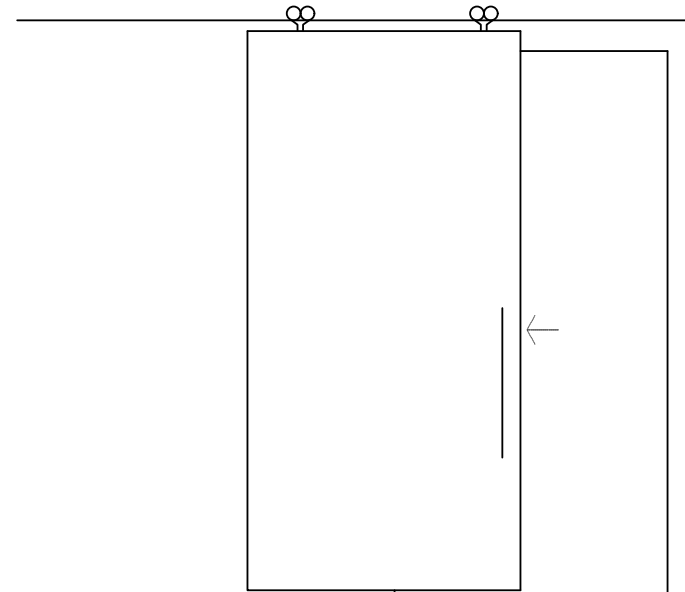
Euro



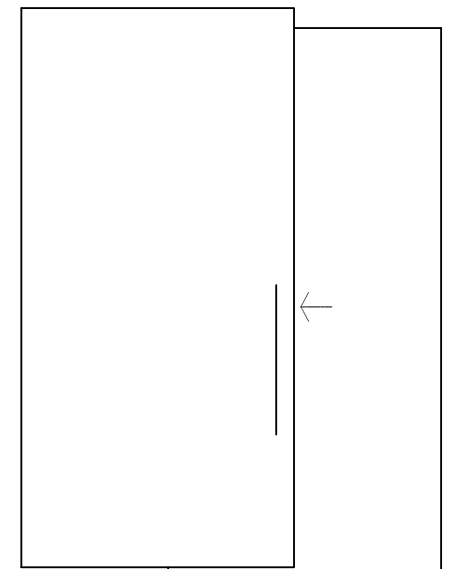
Euro Bifold



Barn



Ghost





# Finishes

DAYORIS offers a wide variety of finishes for Modern Interior Doors. High end materials can be customized to fit individual preferences and requirements. Our selections feature primed, high-end Italian laminates, wood veneers, and matte lacquer finishes.

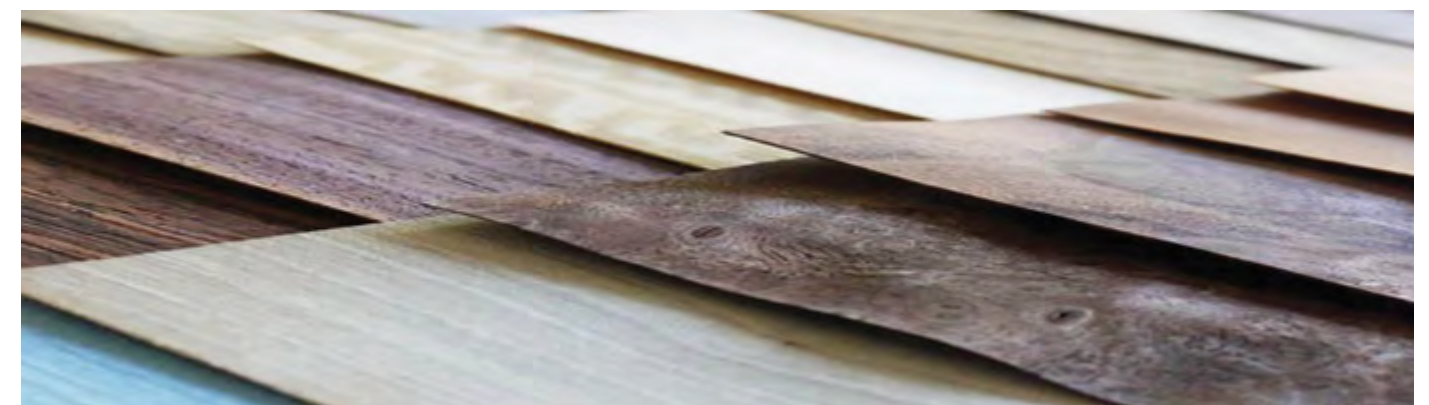
- Primed (Paint grade finish)
- Laminated Finishes
- Matte Lacquer



Color match available



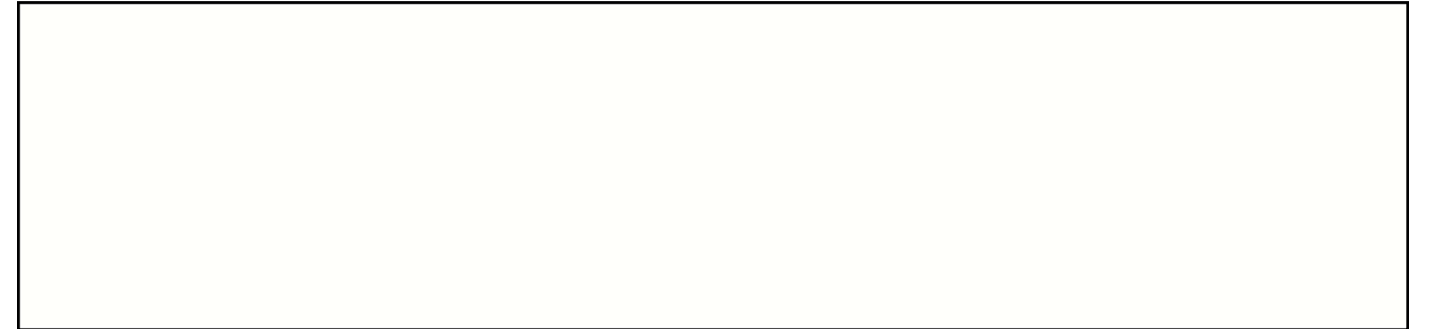
- Wood Veneers (Optional wire brush texture, Custom stain and lacquer)







Diamon



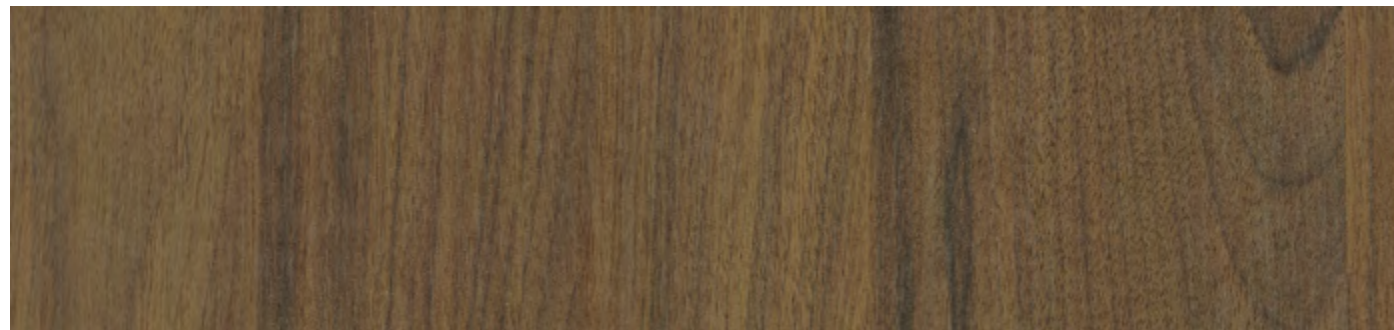
White Matte



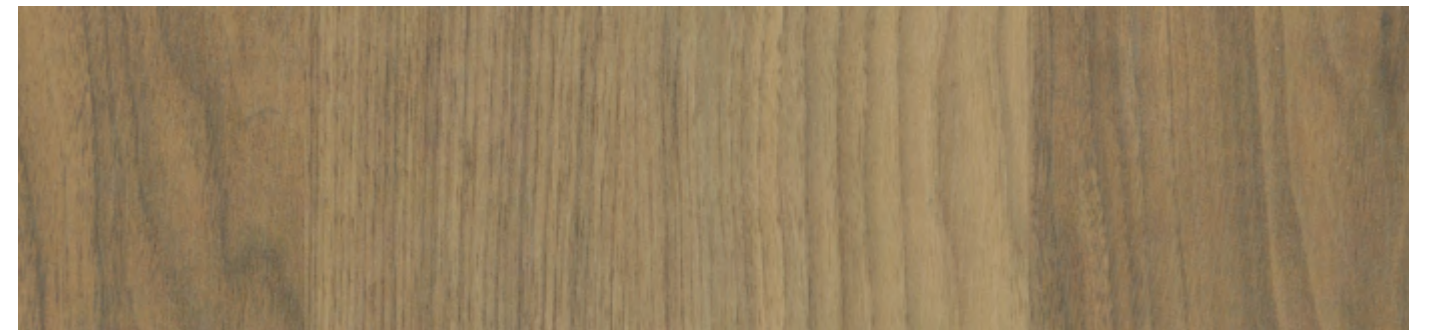
Vernice



Natur



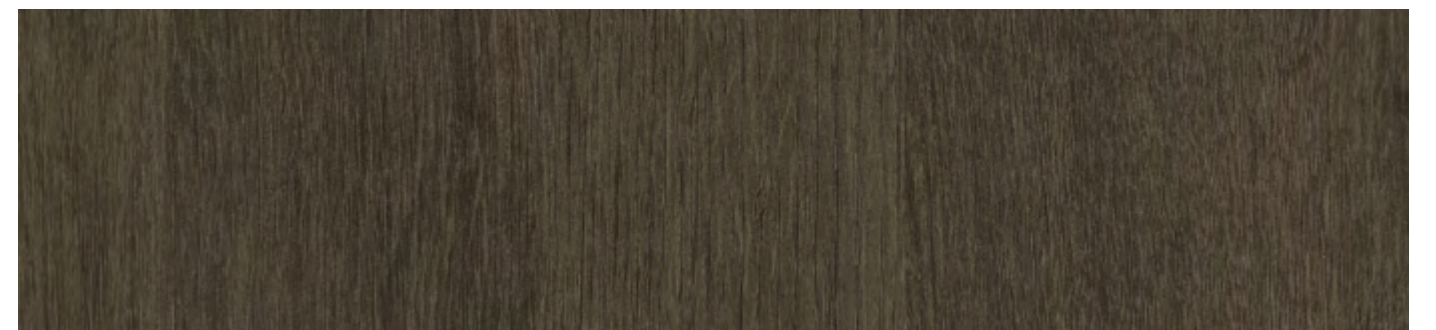
Norey



Nogal Siena

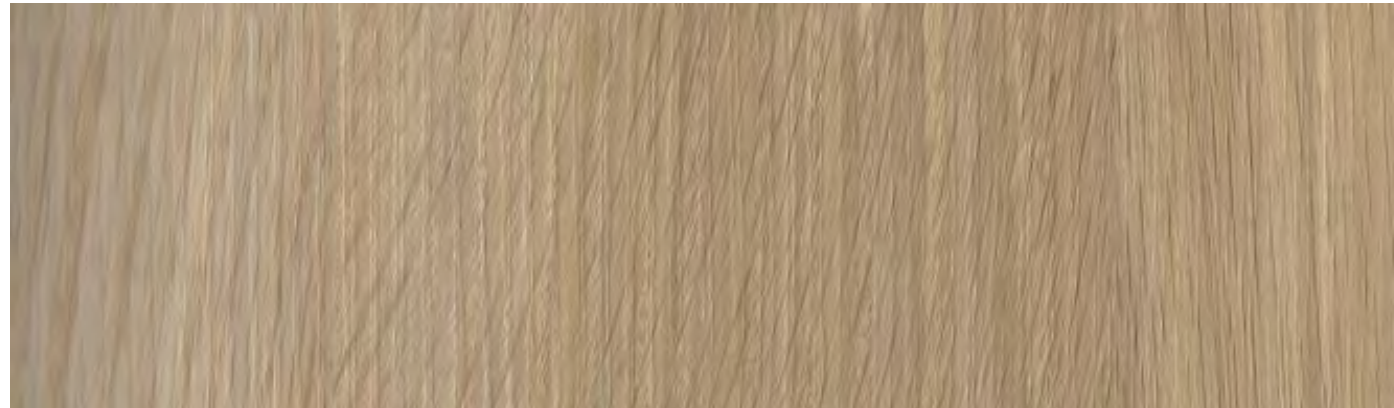


Cherry/ Quercia

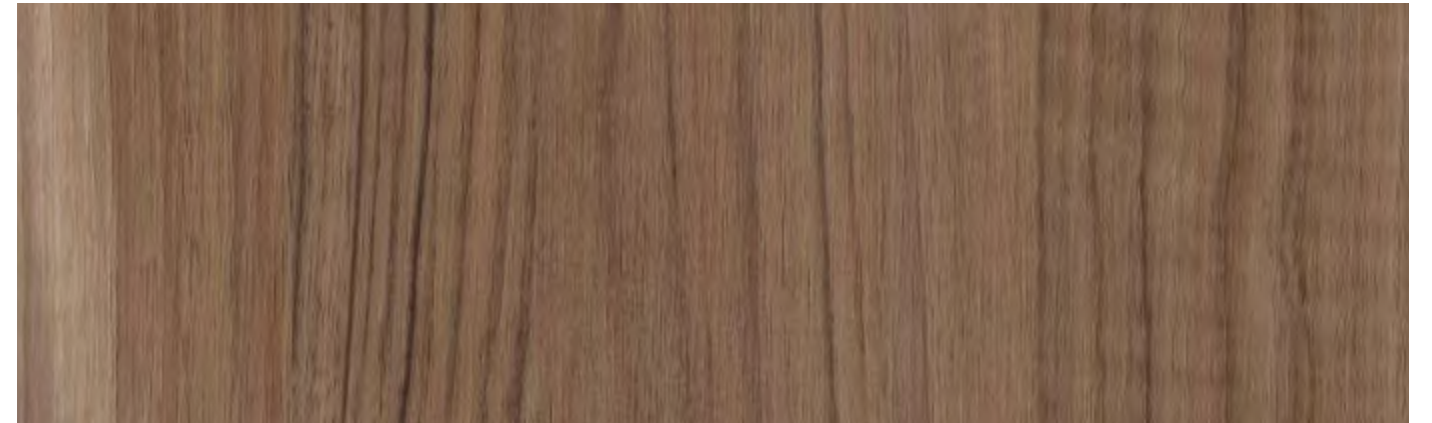


Roble Azabache

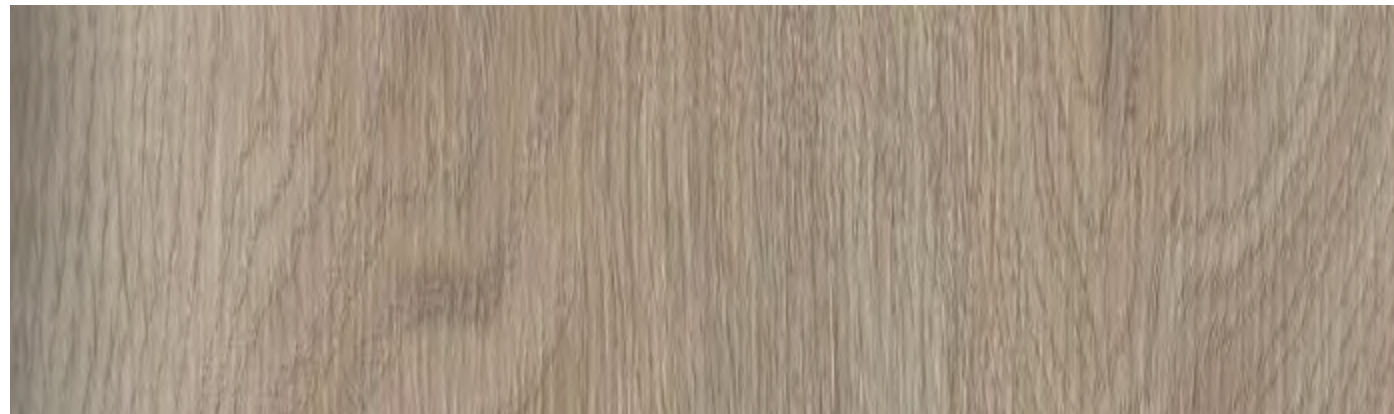




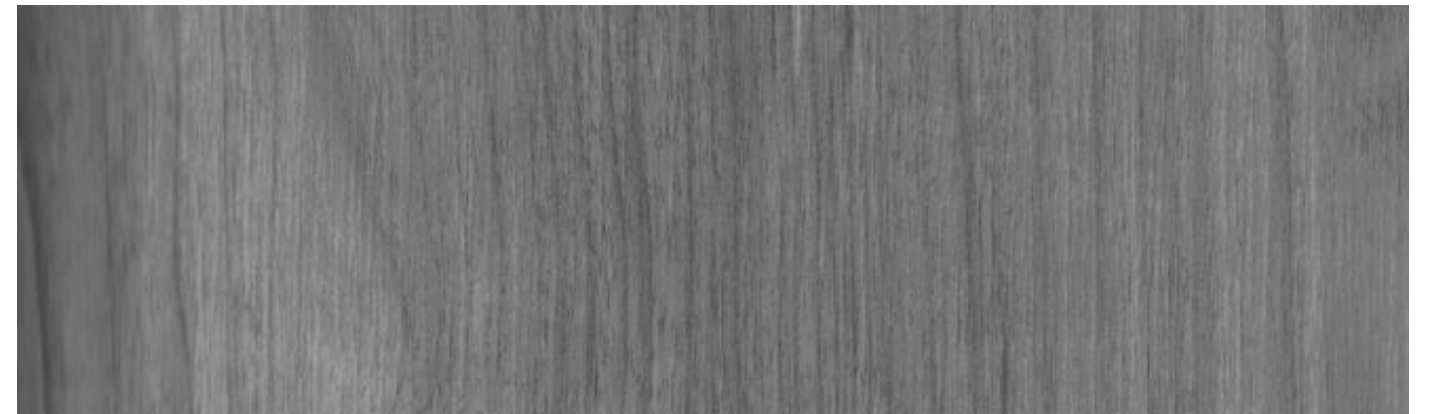
Rovere Ljubiana Tenue - 1340



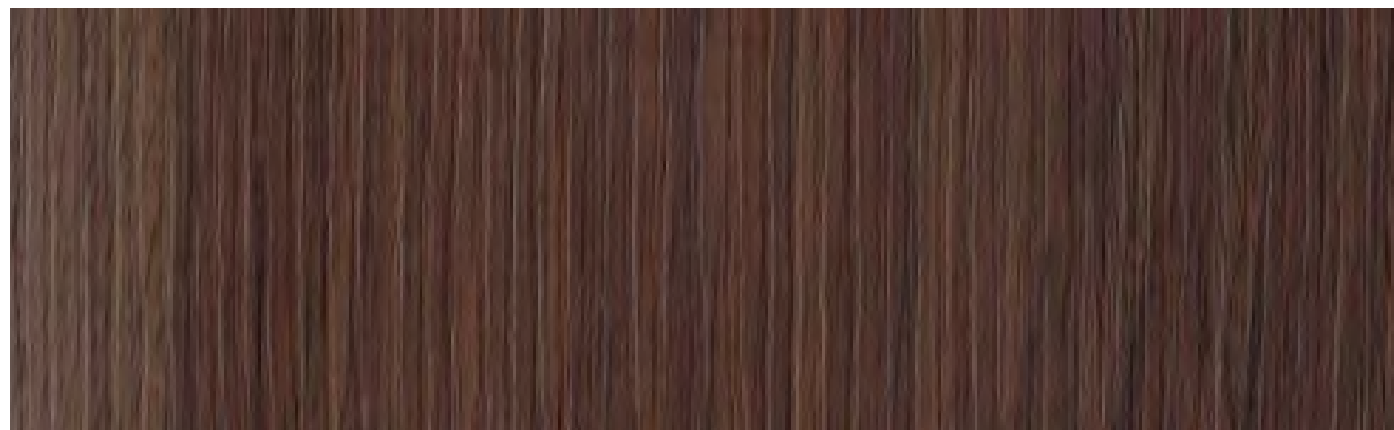
Noce - 1100



Rovere Arena - 1341



Noce Grigio Argentato - 1124



Rovere Navona - 1327



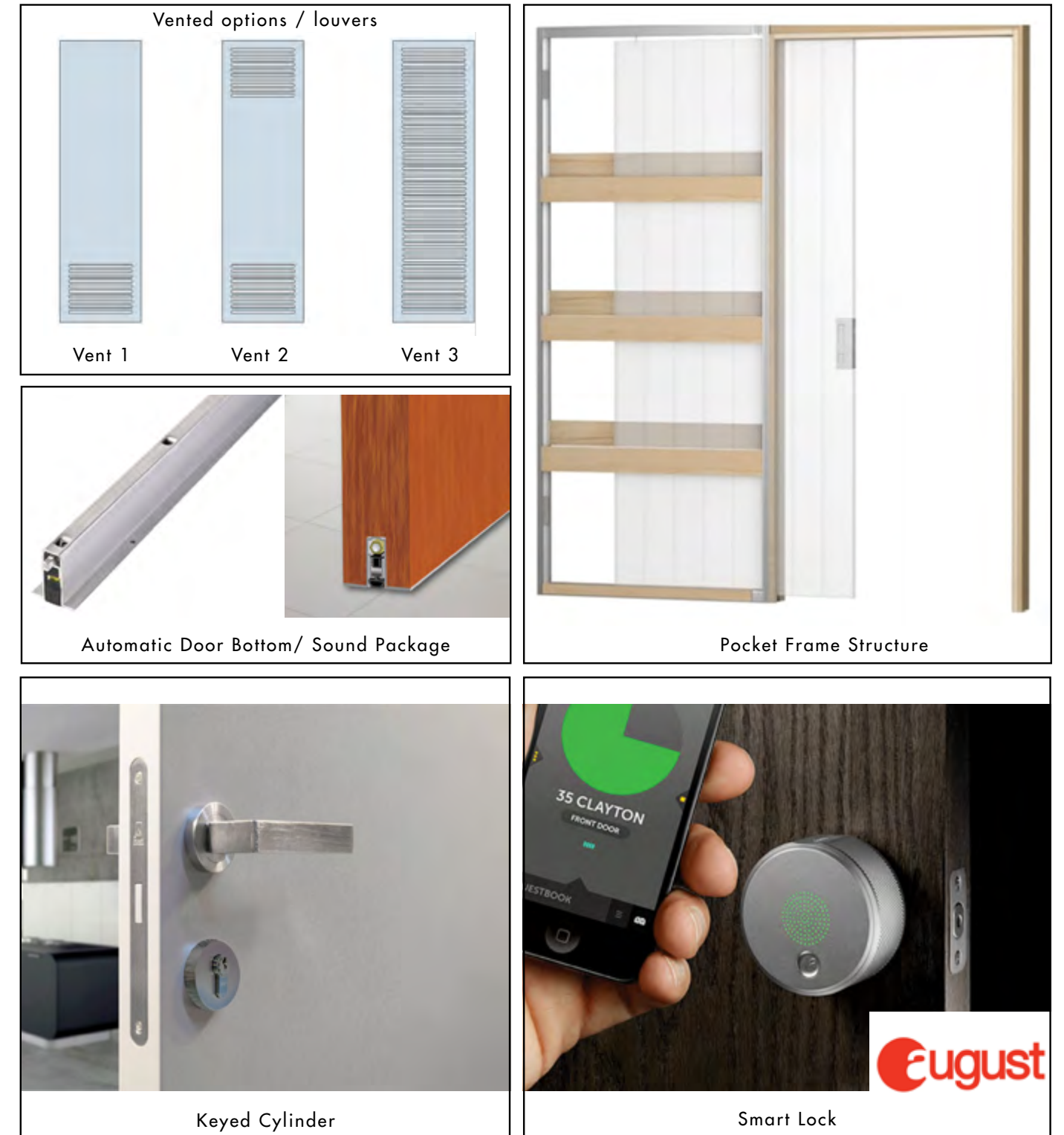
Rovere Cenere - 1326



## - Laminated Suncrest - Domestic



## - Optional Upgrades





# Hardware Included



Round Satin



Square Satin



Round Polished



Square Polished



Flat Round Satin



Twist Satin



Flat Round Polished



Twist Polished



\* Round Black



\* Square Black

\* Optional Upgrades

# - Custom Options

DAYORIS provides personalized options for individuals seeking an added level of customization, luxury, and elegance. Through a partnership with Fimet Handles, you have the opportunity to select from its designs, and DAYORIS will bring your vision to life.



## Magnetic Lock

If another Hardware is specified, the magnetic lock is compatible with all major European brands (Vali & Vali, Olivari, Colombo, FSB...)



# Black Package

## Optional Upgrade:

- Black Hinges
- Black Aluminum Profile
- Black Mortise Lock and Handles

